

FACT BOOK 2017



**Georgia
Tech** 
CREATING THE NEXT

Admissions¹

Freshman Admissions by Year and College, Fall Terms	2
Freshman Admissions by Year and Demographic, Fall Terms.....	3
Average SAT Scores for Freshman Cohorts.....	4
Average ACT Scores for Freshman Cohorts	4
Transfer Admissions by Year and College, Fall Terms.....	5
Transfer Admissions by Year and Demographic, Fall Terms	6
Graduate Admissions by Year and College, Fall Terms.....	7
Graduate Admissions by Year and Demographic, Fall Terms.....	8

Enrollment¹

Fall Enrollment by Level, Class, and Gender, Three-Term History.....	10
Fall Enrollment by Class and Level.....	11
Fall Undergraduate Enrollment by College and Major.....	12
Fall Undergraduate Enrollment by College and Major, Ten-Term History.....	13
Fall Graduate Enrollment by College and Major	15
Fall Graduate Enrollment by College and Major, Ten-Term History	17
Graduate Enrollment by Degree Program, Fall Terms.....	19
Fall Enrollment by Country of Residence.....	20
Fall Enrollment by State of Residence	23
Fall Enrollment by Georgia County of Residence.....	25

Degrees Conferred

Summary of Degrees Conferred by College and Degree Level, Ten-Year History	29
Bachelor's Degrees Conferred by College, Ten-Year History	30
Master's Degrees Conferred by College, Ten-Year History.....	32
Ph.D. Degrees Conferred by College, Ten-Year History.....	35
Degrees Conferred by College, Ethnicity and Gender	37
Degrees Conferred by Country of Residence.....	38
Degrees Conferred by State of Residence	40
Degrees Conferred by Georgia County of Residence.....	42

Institute Information

Additional Student Information

Student Grades by College & Percent.....	45
Student Semester Credit Hours Earned by College & Division.....	46
Retention Rates for Entering Freshmen	47
Graduation Rates for Entering Freshmen.....	48

<i>Additional Student Information (Continued)</i>	
Alumni	49
Career Discovery & Development.....	50
Experiential Learning	50
International Programs (Study Abroad).....	51
<i>Facilities</i>	
Housing.....	55
Library.....	55
Space.....	55
<i>Finance</i>	
Tuition and Fees.....	56
Financial Aid.....	56
Institute Finances	57
<i>Institute Research</i>	
Proposals, Awards and Sponsored Programs	58
Enterprise Innovation Institute	62
<i>Faculty</i>	
Faculty by Gender.....	63
Faculty by Race/Ethnicity.....	64
Faculty by Tenure/Tenure-Track	65
<i>Georgia Tech Organizational Charts</i>	
Chart A: Office of the President	66
Chart B: Provost and Executive Vice President for Academic Affairs.....	67
Chart C: Degree Granting Schools and Departments	68
Chart D: Executive Vice President for Administration and Finance	69
Chart E: Executive Vice President for Research.....	70
Chart F: Student Life.....	71
Chart G: Development	72
Chart H: Institute Communications	73
Chart I: Institute Diversity	74
Chart J: Georgia Tech Athletic Association.....	75

¹Fall 2017 term data as of the end of term.



OL

Admissions

2017 Fact Book

Freshman Admissions by Year and College, Fall Terms

Term	College	Number Applied	Number Accepted	%Applied Accepted	Number Enrolled	%Accepted Enrolled
Fall 2013	College of Computing	1,522	557	36.6%	193	34.6%
	College of Design	450	143	31.8%	54	37.8%
	College of Engineering	11,794	5,135	43.5%	1,882	36.7%
	College of Sciences	2,287	853	37.3%	269	31.5%
	Ivan Allen College	783	283	36.1%	118	41.7%
	Scheller College of Business	829	281	33.9%	160	56.9%
	Total	17,665	7,252	41.1%	2,676	36.9%
Fall 2014	College of Computing	2,820	880	31.2%	285	32.4%
	College of Design	478	144	30.1%	61	42.4%
	College of Engineering	17,077	6,011	35.2%	1,881	31.3%
	College of Sciences	3,546	1,013	28.6%	306	30.2%
	Ivan Allen College	927	304	32.8%	123	40.5%
	Scheller College of Business	1,019	271	26.6%	155	57.2%
	Total	25,867	8,623	33.3%	2,811	32.6%
Fall 2015	College of Computing	3,828	1,136	29.7%	371	32.7%
	College of Design	476	170	35.7%	67	39.4%
	College of Engineering	17,049	5,733	33.6%	2,004	35.0%
	College of Sciences	3,723	1,049	28.2%	303	28.9%
	Ivan Allen College	1,078	388	36.0%	182	46.9%
	Scheller College of Business	1,110	281	25.3%	164	58.4%
	Total	27,264	8,757	32.1%	3,091	35.3%
Fall 2016	College of Computing	5,003	953	19.0%	321	33.7%
	College of Design	592	181	30.6%	80	44.2%
	College of Engineering	18,543	4,894	26.4%	1,745	35.7%
	College of Sciences	3,821	1,115	29.2%	384	34.4%
	Ivan Allen College	1,348	401	29.7%	175	43.6%
	Scheller College of Business	1,224	315	25.7%	171	54.3%
	Total	30,531	7,859	25.7%	2,876	36.6%
Fall 2017	College of Computing	5,535	897	16.2%	279	31.1%
	College of Design	707	238	33.7%	111	46.6%
	College of Engineering	18,610	4,197	22.6%	1,622	38.6%
	College of Sciences	4,140	1,240	30.0%	479	38.6%
	Ivan Allen College	1,207	429	35.5%	188	43.8%
	Scheller College of Business	1,280	346	27.0%	183	52.9%
	Total	31,479	7,347	23.3%	2,862	39.0%

Freshman Admissions by Year and Demographic, Fall Terms

Term	Demographic	Number Applied		Number Accepted		%Applied Accepted		Number Enrolled		%Accepted Enrolled	
		Male	Female	Male	Female	Male	Female	Male	Female	Male	Female
Fall 2013	Asian	2,259	938	1,022	537	45.2%	57.2%	341	184	33.4%	34.3%
	Black or African American	723	473	181	154	25.0%	32.6%	90	66	49.7%	42.9%
	Hispanic or Latino	849	364	306	165	36.0%	45.3%	86	53	28.1%	32.1%
	American Indian or Alaska Native	16	6	4	2	25.0%	33.3%	2		50.0%	
	Native Hawaiian or Other Pacific Islander	11	3	4	1	36.4%	33.3%	3	1	75.0%	100.0%
	Two or more	364	235	157	113	43.1%	48.1%	61	46	38.9%	40.7%
	Unknown	58	23	18	13	31.0%	56.5%	5	3	27.8%	23.1%
	White	5,101	2,258	2,319	1,359	45.5%	60.2%	908	524	39.2%	38.6%
	International	2,932	1,052	569	328	19.4%	31.2%	183	120	32.2%	36.6%
Total	12,313	5,352	4,580	2,672	37.2%	49.9%	1,679	997	36.7%	37.3%	
Fall 2014	Asian	3,193	1,397	1,271	712	39.8%	51.0%	377	225	29.7%	31.6%
	Black or African American	1,167	781	252	184	21.6%	23.6%	88	60	34.9%	32.6%
	Hispanic or Latino	1,324	582	389	217	29.4%	37.3%	114	70	29.3%	32.3%
	American Indian or Alaska Native	14	5	4		28.6%		1		25.0%	
	Native Hawaiian or Other Pacific Islander	10	7	4	3	40.0%	42.9%		1		33.3%
	Two or more	574	311	186	141	32.4%	45.3%	70	48	37.6%	34.0%
	Unknown	642	260	255	124	39.7%	47.7%	58	34	22.7%	27.4%
	White	6,806	2,970	2,474	1,561	36.4%	52.6%	847	579	34.2%	37.1%
	International	4,314	1,510	570	276	13.2%	18.3%	178	61	31.2%	22.1%
Total	18,044	7,823	5,405	3,218	30.0%	41.1%	1,733	1,078	32.1%	33.5%	
Fall 2015	Asian	3,497	1,515	1,275	777	36.5%	51.3%	376	269	29.5%	34.6%
	Black or African American	1,336	854	301	207	22.5%	24.2%	115	85	38.2%	41.1%
	Hispanic or Latino	1,378	567	442	238	32.1%	42.0%	122	70	27.6%	29.4%
	American Indian or Alaska Native	18	9	1	2	5.6%	22.2%	1	1	100.0%	50.0%
	Native Hawaiian or Other Pacific Islander	11	3	2	1	18.2%	33.3%				
	Two or more	576	312	198	142	34.4%	45.5%	69	45	34.8%	31.7%
	Unknown	1,254	555	437	266	34.8%	47.9%	116	77	26.5%	28.9%
	White	6,358	2,778	2,122	1,519	33.4%	54.7%	861	650	40.6%	42.8%
	International	4,589	1,654	502	325	10.9%	19.6%	152	82	30.3%	25.2%
Total	19,017	8,247	5,280	3,477	27.8%	42.2%	1,812	1,279	34.3%	36.8%	
Fall 2016	Asian	3,995	1,853	1,049	731	26.3%	39.4%	343	239	32.7%	32.7%
	Black or African American	1,300	936	219	210	16.8%	22.4%	98	86	44.7%	41.0%
	Hispanic or Latino	1,539	715	357	241	23.2%	33.7%	105	77	29.4%	32.0%
	American Indian or Alaska Native	20	13	2	2	10.0%	15.4%		1		50.0%
	Native Hawaiian or Other Pacific Islander	11	5	3		27.3%					
	Two or more	633	339	169	115	26.7%	33.9%	54	45	32.0%	39.1%
	Unknown	1,181	555	366	228	31.0%	41.1%	107	54	29.2%	23.7%
	White	7,594	3,366	2,020	1,448	26.6%	43.0%	815	607	40.3%	41.9%
	International	4,763	1,713	436	263	9.2%	15.4%	165	80	37.8%	30.4%
Total	21,036	9,495	4,621	3,238	22.0%	34.1%	1,687	1,189	36.5%	36.7%	
Fall 2017	Asian	4,218	1,873	962	666	22.8%	35.6%	319	256	33.2%	38.4%
	Black or African American	1,385	945	242	254	17.5%	26.9%	100	101	41.3%	39.8%
	Hispanic or Latino	1,647	762	334	244	20.3%	32.0%	105	95	31.4%	38.9%
	American Indian or Alaska Native	15	11		1		9.1%				
	Native Hawaiian or Other Pacific Islander	17	5	2		11.8%		1		50.0%	
	Two or more	723	370	157	127	21.7%	34.3%	62	48	39.5%	37.8%
	Unknown	1,104	477	300	181	27.2%	37.9%	90	56	30.0%	30.9%
	White	7,750	3,401	1,861	1,403	24.0%	41.3%	839	628	45.1%	44.8%
	International	5,002	1,774	402	211	8.0%	11.9%	103	59	25.6%	28.0%
Total	21,861	9,618	4,260	3,087	19.5%	32.1%	1,619	1,243	38.0%	40.3%	

Average SAT Scores for Freshman Cohorts

Cohort	SAT Reading	SAT Math	SAT Composite
Fall 2008	625	680	1305
Fall 2009	622	684	1306
Fall 2010	630	682	1312
Fall 2011	636	687	1323
Fall 2012	638	697	1335
Fall 2013	652	705	1357
Fall 2014	664	706	1370
Fall 2015	667	709	1376
Fall 2016	670	709	1379
Fall 2017	693	720	1412

Note: Prior year Fact Books reported the average for re-centered SAT scores which included converted ACT scores for those students who opted to take the ACT instead of the SAT.

Average ACT Scores for Freshman Cohorts

Cohort	ACT Reading	ACT Math	ACT Composite
Fall 2008	28	30	29
Fall 2009	28	30	29
Fall 2010	28	30	29
Fall 2011	29	31	30
Fall 2012	29	31	30
Fall 2013	30	31	30
Fall 2014	31	31	31
Fall 2015	31	31	31
Fall 2016	32	31	32
Fall 2017	32	31	32

Transfer Admissions by Year and College, Fall Terms

Term	College	Number Applied	Number Accepted	%Applied Accepted	Number Enrolled	%Accepted Enrolled
Fall 2013	College of Computing	187	57	30.5%	43	75.4%
	College of Design	42	15	35.7%	14	93.3%
	College of Engineering	1,128	454	40.2%	350	77.1%
	College of Sciences	174	63	36.2%	43	68.3%
	Ivan Allen College	66	16	24.2%	16	100.0%
	Scheller College of Business	128	34	26.6%	30	88.2%
	Total		1,725	639	37.0%	496
Fall 2014	College of Computing	187	56	29.9%	37	66.1%
	College of Design	43	13	30.2%	12	92.3%
	College of Engineering	1,090	476	43.7%	370	77.7%
	College of Sciences	155	49	31.6%	32	65.3%
	Ivan Allen College	54	15	27.8%	15	100.0%
	Scheller College of Business	118	35	29.7%	33	94.3%
	Total		1,647	644	39.1%	499
Fall 2015	College of Computing	245	55	22.4%	44	80.0%
	College of Design	39	18	46.2%	17	94.4%
	College of Engineering	1,173	406	34.6%	332	81.8%
	College of Sciences	168	57	33.9%	35	61.4%
	Ivan Allen College	65	21	32.3%	18	85.7%
	Scheller College of Business	111	38	34.2%	36	94.7%
	Total		1,801	595	33.0%	482
Fall 2016	College of Computing	292	60	20.5%	47	78.3%
	College of Design	35	22	62.9%	21	95.5%
	College of Engineering	1,214	474	39.0%	411	86.7%
	College of Sciences	174	76	43.7%	55	72.4%
	Ivan Allen College	59	23	39.0%	21	91.3%
	Scheller College of Business	102	33	32.4%	30	90.9%
	Total		1,876	688	36.7%	585
Fall 2017	College of Computing	349	71	20.3%	66	93.0%
	College of Design	58	23	39.7%	22	95.7%
	College of Engineering	1,102	469	42.6%	409	87.2%
	College of Sciences	209	86	41.1%	72	83.7%
	Ivan Allen College	73	31	42.5%	26	83.9%
	Scheller College of Business	125	42	33.6%	40	95.2%
	Total		1,916	722	37.7%	635

Transfer Admissions by Year and Demographic, Fall Terms

Term	Demographic	Number Applied		Number Accepted		%Applied Accepted		Number Enrolled		%Accepted Enrolled	
		Male	Female	Male	Female	Male	Female	Male	Female	Male	Female
Fall 2013	Asian	192	53	83	24	43.2%	45.3%	72	19	86.7%	79.2%
	Black or African American	116	45	42	14	36.2%	31.1%	34	13	81.0%	92.9%
	Hispanic or Latino	93	39	41	17	44.1%	43.6%	28	9	68.3%	52.9%
	American Indian or Alaska Native	1									
	Native Hawaiian or Other Pacific Islander	2	1	1	1	50.0%	100.0%	1	1	100.0%	100.0%
	Two or more	31	13	11	6	35.5%	46.2%	10	6	90.9%	100.0%
	Unknown	2									
	White	443	114	217	50	49.0%	43.9%	186	40	85.7%	80.0%
	International	432	148	94	38	21.8%	25.7%	59	18	62.8%	47.4%
Total	1,312	413	489	150	37.3%	36.3%	390	106	79.8%	70.7%	
Fall 2014	Asian	163	50	66	20	40.5%	40.0%	58	14	87.9%	70.0%
	Black or African American	105	41	45	13	42.9%	31.7%	34	10	75.6%	76.9%
	Hispanic or Latino	102	30	41	17	40.2%	56.7%	25	13	61.0%	76.5%
	American Indian or Alaska Native	1									
	Two or more	37	9	14	3	37.8%	33.3%	11	2	78.6%	66.7%
	Unknown	4		1		25.0%					
	White	441	118	234	51	53.1%	43.2%	204	37	87.2%	72.5%
	International	389	157	95	44	24.4%	28.0%	60	31	63.2%	70.5%
	Total	1,242	405	496	148	39.9%	36.5%	392	107	79.0%	72.3%
Fall 2015	Asian	207	48	70	19	33.8%	39.6%	59	14	84.3%	73.7%
	Black or African American	108	46	38	25	35.2%	54.3%	31	18	81.6%	72.0%
	Hispanic or Latino	98	38	36	20	36.7%	52.6%	24	12	66.7%	60.0%
	American Indian or Alaska Native	1									
	Native Hawaiian or Other Pacific Islander	2									
	Two or more	42	14	12	4	28.6%	28.6%	11	3	91.7%	75.0%
	Unknown	3	1								
	White	484	143	176	69	36.4%	48.3%	166	59	94.3%	85.5%
	International	379	187	80	46	21.1%	24.6%	53	32	66.3%	69.6%
Total	1,324	477	412	183	31.1%	38.4%	344	138	83.5%	75.4%	
Fall 2016	Asian	212	73	77	38	36.3%	52.1%	69	34	89.6%	89.5%
	Black or African American	105	51	45	23	42.9%	45.1%	35	17	77.8%	73.9%
	Hispanic or Latino	108	35	46	13	42.6%	37.1%	36	13	78.3%	100.0%
	American Indian or Alaska Native	2		1		50.0%					
	Native Hawaiian or Other Pacific Islander	1									
	Two or more	47	11	15	5	31.9%	45.5%	14	5	93.3%	100.0%
	Unknown	5	2	2		40.0%		1		50.0%	
	White	487	140	251	78	51.5%	55.7%	234	67	93.2%	85.9%
	International	419	178	55	39	13.1%	21.9%	38	22	69.1%	56.4%
Total	1,386	490	492	196	35.5%	40.0%	427	158	86.8%	80.6%	
Fall 2017	Asian	256	95	97	56	37.9%	58.9%	81	49	83.5%	87.5%
	Black or African American	96	43	40	13	41.7%	30.2%	36	10	90.0%	76.9%
	Hispanic or Latino	110	40	44	16	40.0%	40.0%	36	14	81.8%	87.5%
	American Indian or Alaska Native	2		1		50.0%		1		100.0%	
	Native Hawaiian or Other Pacific Islander	2	1	1	1	50.0%	100.0%	1	1	100.0%	100.0%
	Two or more	45	18	18	13	40.0%	72.2%	18	12	100.0%	92.3%
	Unknown	7	2	2		28.6%		2		100.0%	
	White	504	131	262	71	52.0%	54.2%	241	68	92.0%	95.8%
	International	426	138	53	34	12.4%	24.6%	39	26	73.6%	76.5%

Graduate Admissions by Year and College, Fall Terms

Term	College	Number Applied	Number Accepted	%Applied Accepted	Number Enrolled	%Accepted Enrolled
Fall 2013	College of Computing	2,132	387	18.2%	180	46.5%
	College of Design	516	320	62.0%	134	41.9%
	College of Engineering	6,581	2,019	30.7%	944	46.8%
	College of Sciences	1,466	407	27.8%	167	41.0%
	Ivan Allen College	252	115	45.6%	52	45.2%
	Scheller College of Business	889	361	40.6%	230	63.7%
	Total	11,836	3,609	30.5%	1,707	47.3%
Fall 2014	College of Computing	3,837	1,121	29.2%	809	72.2%
	College of Design	609	375	61.6%	121	32.3%
	College of Engineering	7,437	2,352	31.6%	1,194	50.8%
	College of Sciences	1,457	391	26.8%	169	43.2%
	Ivan Allen College	262	118	45.0%	52	44.1%
	Scheller College of Business	956	359	37.6%	249	69.4%
	Total	14,558	4,716	32.4%	2,594	55.0%
Fall 2015	College of Computing	4,256	1,279	30.1%	875	68.4%
	College of Design	626	421	67.3%	161	38.2%
	College of Engineering	7,413	2,083	28.1%	936	44.9%
	College of Sciences	1,456	396	27.2%	177	44.7%
	Ivan Allen College	267	151	56.6%	62	41.1%
	Scheller College of Business	1,341	445	33.2%	276	62.0%
	Total	15,359	4,775	31.1%	2,487	52.1%
Fall 2016	College of Computing	4,648	1,385	29.8%	1,026	74.1%
	College of Design	724	449	62.0%	158	35.2%
	College of Engineering	7,173	2,384	33.2%	1,132	47.5%
	College of Sciences	1,447	429	29.6%	183	42.7%
	Ivan Allen College	276	169	61.2%	60	35.5%
	Scheller College of Business	1,261	448	35.5%	273	60.9%
	Total	15,529	5,264	33.9%	2,832	53.8%
Fall 2017	College of Computing	5,859	2,091	35.7%	1,652	79.0%
	College of Design	666	430	64.6%	136	31.6%
	College of Engineering	8,013	2,611	32.6%	1,227	47.0%
	College of Sciences	1,427	407	28.5%	185	45.5%
	Ivan Allen College	266	163	61.3%	60	36.8%
	Scheller College of Business	1,290	427	33.1%	269	63.0%
	Total	17,521	6,129	35.0%	3,529	57.6%

Graduate Admissions by Year and Demographic, Fall Terms

Term	Demographic	Number Applied		Number Accepted		%Applied Accepted		Number Enrolled		%Accepted Enrolled	
		Male	Female	Male	Female	Male	Female	Male	Female	Male	Female
Fall 2013	Asian	434	189	230	103	53.0%	54.5%	105	42	45.7%	40.8%
	Black or African American	196	139	79	46	40.3%	33.1%	59	26	74.7%	56.5%
	Hispanic or Latino	157	62	96	35	61.1%	56.5%	52	20	54.2%	57.1%
	Native Hawaiian or Other Pacific Islander	6	1	5	1	83.3%	100.0%	1		20.0%	
	Two or more	65	33	31	23	47.7%	69.7%	15	10	48.4%	43.5%
	Unknown	1		1		100.0%		1		100.0%	
	White	1,595	634	980	389	61.4%	61.4%	489	175	49.9%	45.0%
	International	5,990	2,334	1,078	512	18.0%	21.9%	508	204	47.1%	39.8%
Total	8,444	3,392	2,500	1,109	29.6%	32.7%	1,230	477	49.2%	43.0%	
Fall 2014	Asian	652	231	340	112	52.1%	48.5%	182	52	53.5%	46.4%
	Black or African American	252	153	108	64	42.9%	41.8%	70	40	64.8%	62.5%
	Hispanic or Latino	241	114	117	55	48.5%	48.2%	77	30	65.8%	54.5%
	American Indian or Alaska Native	5	5	2	2	40.0%	40.0%	1	1	50.0%	50.0%
	Native Hawaiian or Other Pacific Islander	6	2	4	1	66.7%	50.0%	2		50.0%	
	Two or more	127	52	67	23	52.8%	44.2%	42	11	62.7%	47.8%
	Unknown	1									
	White	2,139	669	1,294	383	60.5%	57.2%	779	188	60.2%	49.1%
	International	7,227	2,681	1,486	658	20.6%	24.5%	805	314	54.2%	47.7%
	Null	1									
Total	10,651	3,907	3,418	1,298	32.1%	33.2%	1,958	636	57.3%	49.0%	
Fall 2015	Asian	634	217	325	121	51.3%	55.8%	197	62	60.6%	51.2%
	Black or African American	248	151	111	59	44.8%	39.1%	82	29	73.9%	49.2%
	Hispanic or Latino	240	119	124	61	51.7%	51.3%	65	31	52.4%	50.8%
	American Indian or Alaska Native	6		4		66.7%		2		50.0%	
	Native Hawaiian or Other Pacific Islander	1		1		100.0%		1		100.0%	
	Two or more	127	56	75	32	59.1%	57.1%	35	17	46.7%	53.1%
	Unknown	3		1		33.3%		1		100.0%	
	White	2,020	690	1,245	423	61.6%	61.3%	732	197	58.8%	46.6%
	International	7,768	3,079	1,468	725	18.9%	23.5%	715	321	48.7%	44.3%
	Total	11,047	4,312	3,354	1,421	30.4%	33.0%	1,830	657	54.6%	46.2%
Fall 2016	Asian	705	305	404	161	57.3%	52.8%	238	83	58.9%	51.6%
	Black or African American	255	141	121	57	47.5%	40.4%	90	38	74.4%	66.7%
	Hispanic or Latino	288	109	164	58	56.9%	53.2%	87	28	53.0%	48.3%
	American Indian or Alaska Native	2		1		50.0%					
	Native Hawaiian or Other Pacific Islander	3		2		66.7%		1		50.0%	
	Two or more	127	66	80	36	63.0%	54.5%	53	17	66.3%	47.2%
	White	2,094	742	1,342	465	64.1%	62.7%	831	243	61.9%	52.3%
	International	7,424	3,268	1,577	796	21.2%	24.4%	767	356	48.6%	44.7%
	Total	10,898	4,631	3,691	1,573	33.9%	34.0%	2,067	765	56.0%	48.6%
Fall 2017	Asian	986	422	544	212	55.2%	50.2%	345	113	63.4%	53.3%
	Black or African American	285	175	132	68	46.3%	38.9%	90	46	68.2%	67.6%
	Hispanic or Latino	416	130	227	77	54.6%	59.2%	159	39	70.0%	50.6%
	American Indian or Alaska Native	8	1	5		62.5%		3		60.0%	
	Native Hawaiian or Other Pacific Islander	2		2		100.0%		1		50.0%	
	Two or more	174	84	102	47	58.6%	56.0%	64	16	62.7%	34.0%
	White	2,717	838	1,702	512	62.6%	61.1%	1,162	264	68.3%	51.6%
	International	7,829	3,454	1,623	876	20.7%	25.4%	870	357	53.6%	40.8%
Total	12,417	5,104	4,337	1,792	34.9%	35.1%	2,694	835	62.1%	46.6%	



Enrollment

2017 Fact Book

Fall Enrollment by Level, Class, and Gender, Three-Term History

Level	Class	Fall 2015			Fall 2016			Fall 2017		
		Male	Female	Total	Male	Female	Total	Male	Female	Total
Undergraduate	Freshman	1,431	1,134	2,565	1,270	994	2,264	1,232	1,034	2,266
	Sophomore	1,908	1,175	3,083	1,935	1,347	3,282	1,821	1,270	3,091
	Junior	2,320	1,081	3,401	2,304	1,249	3,553	2,300	1,391	3,691
	Senior	3,690	1,721	5,411	3,830	1,833	5,663	3,804	1,958	5,762
	JEPHS*	281	185	466	325	151	476	345	182	527
	Special Undergraduate	152	65	217	160	88	248	156	79	235
	Total		9,782	5,361	15,143	9,824	5,662	15,486	9,658	5,914
Graduate	Masters	5,062	1,448	6,510	6,181	1,687	7,868	8,117	2,167	10,284
	Ph.D.	2,460	832	3,292	2,505	910	3,415	2,477	967	3,444
	Special Graduate	66	26	92	43	24	67	41	28	69
	Total		7,588	2,306	9,894	8,729	2,621	11,350	10,635	3,162
Institute Total		17,370	7,667	25,037	18,553	8,283	26,836	20,293	9,076	29,369

*JEPHS: Joint Enrollment Program for High School Students

Fall Enrollment by Class and Level, Fall 2017

Race-Ethnicity	Gender	Undergraduate							Graduate				Institute Total
		Freshman	Sophomore	Junior	Senior	JEPHS*	Special Undergraduate	Total	Masters	Ph.D.	Special Graduate	Total	
Asian	Female	169	267	341	396	96	8	1,277	356	90	3	449	1,726
	Male	163	362	481	803	182	9	2,000	1,135	201	3	1,339	3,339
	Total	332	629	822	1,199	278	17	3,277	1,491	291	6	1,788	5,065
Black or African American	Female	95	110	92	132	5	15	449	127	39	3	169	618
	Male	105	120	158	227	6	17	633	322	51	2	375	1,008
	Total	200	230	250	359	11	32	1,082	449	90	5	544	1,626
Hispanic or Latino	Female	89	84	86	122	8	10	399	80	49	1	130	529
	Male	89	112	161	251	12	8	633	429	87	1	517	1,150
	Total	178	196	247	373	20	18	1,032	509	136	2	647	1,679
International	Female	63	73	94	186	2	26	444	910	470	7	1,387	1,831
	Male	111	161	201	396	14	69	952	2,498	1,281	14	3,793	4,745
	Total	174	234	295	582	16	95	1,396	3,408	1,751	21	5,180	6,576
Other	Female	46	51	67	44	1	2	211	3	1		4	215
	Male	65	97	107	97	7	2	375	11	3		14	389
	Total	111	148	174	141	8	4	586	14	4		18	604
Two or more	Female	37	55	54	86	8	3	243	41	17		58	301
	Male	47	68	90	129	7	2	343	186	31	1	218	561
	Total	84	123	144	215	15	5	586	227	48	1	276	862
White	Female	535	630	657	992	62	15	2,891	650	301	14	965	3,856
	Male	652	901	1,102	1,901	117	49	4,722	3,536	823	20	4,379	9,101
	Total	1,187	1,531	1,759	2,893	179	64	7,613	4,186	1,124	34	5,344	12,957
Institute Total		2,266	3,091	3,691	5,762	527	235	15,572	10,284	3,444	69	13,797	29,369

*JEPHS: Joint Enrollment Program for High School Students

Undergraduate Enrollment by College and Major, Fall Term History

College	Major	2008	2009	2010	2011	2012	2013	2014	2015	2016	2017
College of Computing	Computational Media	132	142	150	134	83	111	109	111	101	89
	Computer Science	761	777	839	838	1,037	1,192	1,441	1,766	2,046	2,111
	Total	893	919	989	972	1,120	1,303	1,550	1,877	2,147	2,200
College of Design	Architecture	248	212	210	170	160	134	125	102	99	155
	Building Construction	163	143	115	86	50	45	24	6		
	Industrial Design	128	130	138	126	111	110	114	127	141	210
	Music Technology									7	33
	Pre-Architecture	107	123	83	95	46	33	26	43	48	3
	Pre-Building Construction	16	11	5	4	6					
	Pre-Industrial Design	28	33	22	27	39	30	43	38	53	10
Total	690	652	573	508	412	352	332	316	348	411	
College of Engineering	Aerospace Engineering	721	767	762	752	869	875	866	892	947	902
	Biomedical Engineering	921	964	1,041	1,154	1,291	1,369	1,275	1,260	1,176	1,148
	Chemical and Biomolecular Eng	566	675	717	790	862	864	943	991	984	895
	Civil Engineering	699	693	648	595	579	527	488	472	473	442
	Civil Engineering - REP	49	55	49	51	15					
	Computer Engineering	371	381	387	425	455	521	545	590	598	626
	Computer Engineering - REP	24	19	9	5	1					
	Electrical Engineering	769	786	776	846	925	924	928	902	868	792
	Electrical Engineering - REP	33	29	34	33	15					
	Environmental Engineering	82	109	141	179	188	189	183	191	193	211
	Industrial Engineering	1,096	1,176	1,185	1,262	1,391	1,450	1,431	1,432	1,399	1,212
	Materials Science & Engr	117	125	131	159	216	264	315	343	346	341
	Mechanical Engineering	1,442	1,509	1,598	1,662	1,884	2,013	2,053	2,123	2,156	2,011
	Mechanical Engineering - REP	49	62	62	73	43					
	Nuclear & Radiological Engr	153	186	197	177	171	141	119	119	108	110
Polymer & Fiber Engr	139	157	166	106	55	34	15				
Undeclared Coll of Engr	275	208	174	131	108	104	91	102	57	201	
Total	7,506	7,901	8,077	8,400	9,068	9,275	9,252	9,417	9,305	8,891	
College of Sciences	Applied Mathematics	106	107	151	153	144	111	101	118	133	4
	Applied Physics	9	7	9	9	8	12	13	14	13	18

Undergraduate Enrollment by College and Major, Fall Term History

College	Major	2008	2009	2010	2011	2012	2013	2014	2015	2016	2017	
College of Sciences	Biochemistry	115	172	204	235	226	191	193	200	214	242	
	Biology	423	437	470	461	453	395	343	309	358	377	
	Chemistry	141	124	115	110	98	85	78	80	94	126	
	Discrete Mathematics	25	29	27	20	11	14	15	22	35	23	
	Earth & Atmospheric Sciences	54	44	55	44	39	45	30	41	46	41	
	Mathematics											165
	Neuroscience											138
	Physics	130	126	131	145	136	139	127	131	153	185	
	Psychology	123	105	122	135	144	118	105	98	104	93	
	Undeclared Coll of Sciences	29	26	38	31	12	11	16	22	8	1	
	Total		1,155	1,177	1,322	1,343	1,271	1,121	1,021	1,035	1,158	1,413
Ivan Allen College	Applied Lang/Intercultural St				11	19	23	26	19	22	28	
	Computational Media	135	143	150	133	158	114	105	111	101	111	
	Econ & Int'l Affairs	65	70	64	65	64	54	55	52	52	49	
	Economics	57	57	55	47	50	50	50	57	61	78	
	Global Econ/Mod Lang	21	15	22	18	16	9	7	5	7	12	
	History, Technology, & Society	61	80	81	66	69	64	45	45	28	42	
	Int'l Affairs & Mod Lang	176	156	134	117	112	86	77	70	82	72	
	International Affairs	174	153	135	113	93	70	58	64	64	75	
	Lit., Media, & Communication							25	90	92	135	
	Public Policy	63	71	68	64	63	48	47	48	63	76	
	Science, Technology, & Culture	162	166	147	133	103	92	46				
	Undeclared Ivan Allen College	30	25	17	13	9	12	20	22	11		
Total		944	936	873	780	756	622	561	583	583	678	
Scheller College of Business	Business Administration					419	760	1,021	1,173	1,219	1,215	
	Management	1,347	1,356	1,326	1,296	907	541	258	59	2	1	
	Total	1,347	1,356	1,326	1,296	1,326	1,301	1,279	1,232	1,221	1,216	
College of Registrar	Special/Non-Degree	442	576	592	646	572	583	685	683	724	763	
	Total	442	576	592	646	572	583	685	683	724	763	
Institute Total		12,977	13,517	13,752	13,945	14,525	14,557	14,680	15,143	15,486	15,572	



Fall Graduate Enrollment by College and Major

College	Major	Asian			Black or African American			Hispanic or Latino			American Indian or Alaska Native			Native Hawaiian or Other Pacific Islander			Two or more			Unknown			White			International			Institute Total
		Male	Female	Total	Male	Female	Total	Male	Female	Total	Male	Female	Total	Male	Female	Total	Male	Female	Total	Male	Female	Total	Male	Female	Total	Male	Female	Total	
College of Sciences	Computational Sci & Engr																	1	1				2	1	3	9	4	13	17
	Earth & Atmospheric Sciences					3		3	3	1		4						1	1				16	15	31	32	10	42	81
	Human-Computer Interaction	2	1	3														1	1				4	3	7		4	4	15
	Mathematics	2		2	1		1																25	4	29	39	13	52	84
	Ocean Science and Engineering									1		1						1	2	3			1	2	3	1		1	6
	Physics	3	2	5	2		2	2	3	5							2	1	3				51	12	63	53	7	60	138
	Prosthetics & Orthotics		2	2			1		2	2							1	1	1				10	10	20	1	1	2	28
	Psychology	1	3	4	1	2	3	4	2	6							2	1	3				20	28	48	2	9	11	75
	Quanta/Computation Fin	3		3					1	1							1	1	1				5	1	6	15	8	23	34
	Quantitative Biosciences	1		1	1		1		1	1								1	1				3	1	4	7	1	8	16
	Statistics		1	1																			3		3	5	4	9	13
Total	29	31	60	13	13	26	18	20	38		1	1			10	8	18				236	142	378	265	136	401	922		
Ivan Allen College	Cybersecurity	2	1	3		1	1	1	1																	1	1	6	
	Digital Media	3	3	6	1	5	6	2	2														10	4	14	5	6	11	39
	Economics	1		1	1	1	2	1	1	1													10	3	13	15	18	33	50
	Hist & Soc of Tech & Science		1	1		2	2																10	8	18	2	2	4	25
	Human-Computer Interaction					1	1		2	2						1		1					3	4	7	2	3	5	16
	Int'l Affairs, Sci, & Techny	1		1		1	1		1	1													3	3	6	1	4	5	14
	International Affairs		1	1	1		1		1	1													12	9	21	1	1	2	26
	Public Policy	1		1	2	2	4	1	1	2						3		3					8	15	23	7	7	14	47
	Public Policy/Joint Progrm					1	1																3	2	5	2	3	5	11
	Total	8	6	14	5	14	19	5	5	10					4		4						59	48	107	35	45	80	234
Scheller College of Business	Analytics	2	1	3				1	1								1	1				3	6	9	9	5	14	28	
	Business Administration	27	19	46	28	15	43	17	7	24					11	5	16					242	90	332	40	9	49	510	
	Management	2	3	5		2	2																4	5	9	22	15	37	53
	Management of Technology	17	7	24	18	9	27	8	2	10	1		1		1	1	2					45	12	57	8		8	129	
	MBA-Global Business	20	3	23	17	13	30	5	5	10					2	2	4					43	13	56	5	3	8	131	
	Quanta/Computation Fin	2	1	3												1	1	1					9		9	19	8	27	40
Total	70	34	104	63	39	102	31	14	45	1		1		15	9	24					346	126	472	103	40	143	891		
Institute Total	1,335	448	1,783	375	169	544	516	130	646	6	2	8	4	1	5	218	58	276	4	1	5	4,377	966	5,343	3,799	1,387	5,186	13,796	

Graduate Enrollment by College and Major, Fall Term History

College	Major	2008	2009	2010	2011	2012	2013	2014	2015	2016	2017
College of Computing	Algor, Combntrcs & Optimiztion	13	13	17	16	13	16	15	13	10	9
	Analytics							9	13	22	20
	Bioengineering	2	1	1	1			1			4
	Bioinformatics	4	4	3	2	2	2	2	2	1	1
	Computational Sci & Engr	11	28	41	51	59	56	75	89	95	122
	Computer Science	605	580	520	453	472	447	1,733	3,311	4,471	6,445
	Cybersecurity										69
	Human-Centered Computing	39	40	46	39	37	35	40	38	44	36
	Human-Computer Interaction	46	44	54	45	46	47	55	54	59	49
	Information Security	48	51	69	59	60	49	80	70	74	4
	Robotics	7	13	21	26	22	21	23	20	14	17
Total		775	774	772	692	711	673	2,033	3,610	4,790	6,776
College of Design	Architectural Technology									15	125
	Architecture	226	241	233	223	179	165	175	164	145	39
	Building Construction	141	132	118	110	105	98	94	109	92	102
	City & Regional Planning			20	22	24	21	19	23	22	18
	City Planning	98	112	96	84	80	75	66	82	85	84
	Geograhic Info Science & Tech						5	9	11	13	9
	Human-Computer Interaction							13	22	21	27
	Industrial Design	38	37	39	39	44	51	44	45	45	54
	Music Technology	13	17	17	22	24	29	28	31	37	35
	Occupational Safety and Health										23
	Real Estate Development										14
	Urban Design				3	7	5	3	3	11	16
Total		516	539	523	503	463	449	451	490	486	546
College of Engineering	Aerospace Engineering	488	519	535	571	533	499	504	476	480	491
	Algor, Combntrcs & Optimiztion	9	6	7	6	6	4	5	5	7	5
	Analytics							13	19	32	298
	Applied Systems Engineering		9	23	47	60	64	53	50	50	58
	Bioengineering	159	135	137	115	105	99	95	87	97	104
	Bioinformatics	1	2	1	2	2	1		1	2	3
	Biomedical Engineering	81	86	83	86	115	124	128	129	145	157
	Biomedical Innovation/Develop						10	21	31	28	35
	BMED Joint Emory/PKU		3	12	16	27	29	30	33	34	29
	Chemical Engineering	165	187	201	209	218	210	190	214	201	184
	Civil Engineering	230	253	247	264	272	276	263	260	295	298
	Computational Sci & Engr	1	3	9	7	5	10	27	34	89	74
	Electrical & Computer Engr	1,074	1,134	1,140	1,133	1,104	1,156	1,326	1,136	1,118	1,096
	Engineering Sci & Mechanics	5	4	4	1	1	3	3	4	4	3
	Environmental Engineering	74	80	80	92	100	95	126	108	100	116
	Health Systems	16	13	12	8	6	9	12	11	11	7
	Industrial Engineering	318	299	274	267	241	161	128	131	142	134
	International Logistics	30	13	16	18	16	10	11	2	2	
	Manufacturing Leadership									18	29
	Materials Science & Engr	97	110	109	118	133	153	160	165	175	190
	Mechanical Engineering	572	649	701	697	671	663	680	672	697	711
	Medical Physics	25	28	24	24	25	26	30	19	19	32
	Nuclear & Radiological Engr	35	36	43	52	56	60	53	30	16	7
	Nuclear Engineering	7	5	3	2	1		15	33	32	37
	Ocean Science and Engineering										3

Graduate Enrollment by College and Major, Fall Term History

College	Major	2008	2009	2010	2011	2012	2013	2014	2015	2016	2017
College of Engineering	Operations Research	34	49	54	58	69	88	85	97	115	110
	Paper Science Engineering	25	9	5	5	6	2				
	Polymer, Textile & Fiber Engr	59	63	61	42	28	19	12	3	1	
	Polymers	2	1								
	Quanta/Computation Fin	53	37	35	41	52	48	30	27	23	24
	Robotics	5	14	15	24	25	25	33	43	51	60
	Statistics	11	10	5	13	13	9	12	15	21	24
	Supply Chain Engineering				14	52	50	59	61	55	89
	Textile Engineering	1									
	Total	3,577	3,757	3,836	3,932	3,942	3,903	4,104	3,896	4,060	4,408
College of Registrar	Special/Non-Degree				1		17	16	21	28	20
	Total				1		17	16	21	28	20
College of Sciences	Algor, Combntrcs & Optimiztion	13	13	13	14	10	10	6	11	14	15
	Applied Physiology	13	17	23	21	22	21	19	19	14	18
	Bioinformatics	43	47	39	45	49	50	55	73	101	116
	Biology	91	98	98	82	84	71	71	65	70	71
	Chemistry	228	206	204	199	235	228	223	199	208	195
	Computational Sci & Engr		6	8	9	10	13	13	8	13	17
	Earth & Atmospheric Sciences	87	94	92	83	83	88	78	84	90	81
	Human-Computer Interaction	3	4	4	6	6	12	11	10	12	15
	Mathematics	56	61	58	59	55	65	70	69	70	84
	Ocean Science and Engineering										6
	Paper Science Engineering	8	7	7	7	6	2	1			
	Physics	102	107	116	112	133	137	125	138	131	138
	Prosthetics & Orthotics	19	20	19	19	22	25	28	28	26	28
	Psychology	89	80	86	88	80	85	89	90	82	75
	Quanta/Computation Fin	36	29	25	28	25	29	36	39	37	34
	Quantitative Biosciences									9	16
Statistics	3	1	2	6	8	8	11	13	8	13	
Total	791	790	794	778	828	844	836	846	885	922	
Ivan Allen College	Cybersecurity										6
	Digital Media	50	54	55	49	42	44	36	45	45	39
	Economics	35	43	56	52	42	29	34	43	42	50
	Hist & Soc of Tech & Science	21	22	24	32	25	25	25	26	25	25
	Human-Computer Interaction	9	8	8	8	8	14	12	14	17	16
	Int'l Affairs, Sci, & Techny	2	7	9	8	11	11	11	13	14	14
	International Affairs	72	59	58	49	48	47	35	27	36	26
	Public Policy	62	66	68	83	87	67	51	46	53	47
	Public Policy/Joint Progrm	33	30	34	26	23	18	15	12	12	11
	Total	284	289	312	307	286	255	219	226	244	234
Scheller College of Business	Analytics							14	28	24	28
	Business Administration					164	331	421	451	496	510
	Management	298	419	540	596	428	218	97	56	51	53
	Management of Technology	69	84	88	86	92	99	110	126	127	129
	MBA-Global Business	100	101	77	61	85	93	99	113	129	131
	Quanta/Computation Fin	37	25	32	38	34	33	28	31	30	40
Total	504	629	737	781	803	774	769	805	857	891	
Institute Total		6,447	6,778	6,974	6,994	7,033	6,915	8,428	9,894	11,350	13,797

Graduate Enrollment by Degree Program*, Fall Terms

Term	College of Computing			College of Design			College of Engineering			College of Sciences			Ivan Allen College			Scheller College of Business			College of Registrar		Institute Total
	M.S.	Ph.D.	Total	M.S.	Ph.D.	Total	M.S.	Ph.D.	Total	M.S.	Ph.D.	Total	M.S.	Ph.D.	Total	M.S.	Ph.D.	Total	M.S.	Total	
2008	480	295	775	428	88	516	1,674	1,903	3,577	144	647	791	181	103	284	459	45	504			6,447
2009	459	315	774	443	96	539	1,746	2,011	3,757	158	632	790	185	104	289	587	42	629			6,778
2010	450	322	772	428	95	523	1,766	2,070	3,836	149	645	794	197	115	312	686	51	737			6,974
2011	378	314	692	407	96	503	1,826	2,106	3,932	139	639	778	185	122	307	725	56	781	1	1	6,994
2012	413	298	711	373	90	463	1,786	2,156	3,942	148	680	828	163	123	286	755	48	803			7,033
2013	374	299	673	355	94	449	1,767	2,136	3,903	166	678	844	141	114	255	720	54	774	17	17	6,915
2014	1,714	319	2,033	354	97	451	1,972	2,132	4,104	177	659	836	114	105	219	717	52	769	16	16	8,428
2015	3,293	317	3,610	402	88	490	1,818	2,078	3,896	193	653	846	118	108	226	757	48	805	21	21	9,894
2016	4,466	324	4,790	399	87	486	1,896	2,164	4,060	199	686	885	136	108	244	811	46	857	28	28	11,350
2017	6,447	329	6,776	466	80	546	2,242	2,166	4,408	205	717	922	133	101	234	840	51	891	20	20	13,797

* Master's program totals include Special Non-Degree-Seeking graduate students.

Enrollment by Country of Residence, Fall 2017

Country	Undergraduate	Graduate	Institute Total
Albania	2	1	3
Algeria		1	1
Angola	2		2
Argentina	9	10	19
Armenia	1	1	2
Australia	4	36	40
Austria		3	3
Azerbaijan		1	1
Bahamas	1		1
Bahrain	1		1
Bangladesh	5	21	26
Barbados		1	1
Belarus	1	6	7
Belgium	1	2	3
Belize	1		1
Benin		2	2
Bolivia	5	2	7
Brazil	48	36	84
Brunei	1		1
Bulgaria		11	11
Burkina Faso	1		1
Burma (Myanmar)	4	2	6
Burundi	1	1	2
Cameroon		4	4
Canada	8	147	155
Chile	6	23	29
China	295	1,819	2,114
Colombia	20	42	62
Comoros		1	1
Congo		3	3
Costa Rica	8	13	21
Cote D'Ivoire	4		4
Croatia		2	2
Cyprus	1		1
Czech Republic	3	5	8
Dem. Republic of the C..	3	2	5
Dominican Republic	7	4	11
Ecuador	5	12	17
Egypt	8	27	35
El Salvador	5	5	10
Equatorial Guinea	1		1
Estonia	1	1	2
Ethiopia	1	6	7
Fiji	1		1
Finland		1	1
France	8	153	161
Gabon	1		1
Georgia	1	2	3

Enrollment by Country of Residence, Fall 2017

Country	Undergraduate	Graduate	Institute Total
Germany	8	31	39
Germany, Federal Rep ..		1	1
Ghana	1	8	9
Greece	4	19	23
Grenada		1	1
Guatemala	8	2	10
Haiti	1	3	4
Honduras	6		6
Hong Kong	9	19	28
Hungary	2	6	8
Iceland		2	2
India	200	1,455	1,655
Indonesia	21	21	42
Iran	6	105	111
Iraq	1	1	2
Ireland	5	5	10
Israel	3	14	17
Italy	13	24	37
Jamaica	4	7	11
Japan	14	13	27
Jordan	4	7	11
Kazakhstan		8	8
Kenya	3	14	17
Korea, Republic of (Sou..	232	282	514
Kuwait	2	4	6
Kyrgyzstan		1	1
Latvia		1	1
Lebanon	8	17	25
Lithuania	1	1	2
Luxembourg	1	2	3
Macao	1		1
Macedonia		1	1
Madagascar		1	1
Malaysia	15	21	36
Mali	1		1
Martinique	1		1
Mauritius		3	3
Mexico	18	48	66
Moldova		1	1
Monaco	1		1
Mongolia	2	2	4
Morocco	2	15	17
Namibia	1		1
Nepal	1	27	28
Netherlands	4	4	8
New Zealand	2	6	8
Nicaragua		3	3
Nigeria	33	30	63

Enrollment by Country of Residence, Fall 2017

Country	Undergraduate	Graduate	Institute Total
Norway	1	2	3
Oman		2	2
Pakistan	7	66	73
Panama	10	12	22
Paraguay	2		2
Peru	1	6	7
Philippines	3	4	7
Poland	2	2	4
Portugal	1	3	4
Qatar	1		1
Romania	1	4	5
Russia	12	26	38
Rwanda	2	2	4
Saudi Arabia	23	60	83
Senegal	3	2	5
Serbia (Prior to 2001)		3	3
Seychelles	1		1
Singapore	17	33	50
Slovakia		2	2
South Africa	3	9	12
Spain	24	15	39
Sri Lanka	3	7	10
Sudan	1	1	2
Sweden	10	1	11
Switzerland	2	4	6
Syria	1	6	7
Taiwan	8	97	105
Tanzania	1	1	2
Thailand	15	14	29
Trinidad and Tobago	5	2	7
Tunisia	3	10	13
Turkey	29	61	90
Turkmenistan		1	1
Uganda		3	3
Ukraine	1	5	6
United Arab Emirates	6	3	9
United Kingdom	22	23	45
Uruguay	2		2
Uzbekistan		3	3
Venezuela	37	4	41
Vietnam	21	28	49
West Bank		1	1
Yemen	1	2	3
Zambia		1	1
Zimbabwe		2	2
Institute Total	1,396	5,178	6,574

Enrollment by State of Residence*, Fall 2017

*Excludes international students

State/U.S. Territory	Undergraduate			Graduate			Institute Total
	Male	Female	Total	Male	Female	Total	
Alabama	52	29	81	101	26	127	208
Alaska	4	1	5	4	1	5	10
Arizona	29	9	38	72	10	82	120
Arkansas	11	4	15	15	2	17	32
California	182	95	277	662	143	805	1,082
Colorado	29	25	54	67	12	79	133
Connecticut	74	32	106	53	9	62	168
Delaware	9	12	21	11	3	14	35
District of Columbia	7	4	11	35	8	43	54
Florida	368	229	597	369	78	447	1,044
Georgia	5,774	3,891	9,665	1,741	590	2,331	11,996
Hawaii	6	1	7	15	6	21	28
Idaho	2	1	3	20		20	23
Illinois	102	75	177	161	35	196	373
Indiana	16	8	24	46	11	57	81
Iowa	7	2	9	29	2	31	40
Kansas	9	7	16	20	4	24	40
Kentucky	28	10	38	48	9	57	95
Louisiana	21	22	43	39	8	47	90
Maine	12	1	13	11	4	15	28
Maryland	130	87	217	129	32	161	378
Massachusetts	125	53	178	167	36	203	381
Michigan	14	17	31	102	24	126	157
Minnesota	26	10	36	47	4	51	87
Mississippi	6	4	10	23	5	28	38
Missouri	31	16	47	51	13	64	111
Montana	1	1	2	7	2	9	11
Nebraska	5	3	8	12	1	13	21
Nevada	3	1	4	15	4	19	23
New Hampshire	20	11	31	23	4	27	58
New Jersey	223	100	323	196	34	230	553
New Mexico	2	6	8	52	9	61	69
New York	188	78	266	281	80	361	627
North Carolina	182	89	271	164	37	201	472
North Dakota	3	2	5	3	2	5	10
Ohio	93	23	116	116	24	140	256
Oklahoma	11	3	14	25	4	29	43
Oregon	13	6	19	71	9	80	99

Enrollment by State of Residence*, Fall 2017

*Excludes international students

State/U.S. Territory	Undergraduate			Graduate			Institute Total
	Male	Female	Total	Male	Female	Total	
Pennsylvania	158	85	243	161	39	200	443
Rhode Island	10	1	11	8	3	11	22
South Carolina	58	35	93	103	25	128	221
South Dakota	1	1	2	6		6	8
Tennessee	106	57	163	130	15	145	308
Texas	159	106	265	397	82	479	744
Utah	7	3	10	51	10	61	71
Vermont	6	3	9	5	7	12	21
Virginia	173	92	265	241	67	308	573
Washington	38	15	53	140	29	169	222
West Virginia	5	3	8	10		10	18
Wisconsin	20	16	36	57	18	75	111
Wyoming	1	1	2	2		2	4
Guam	1		1				1
Puerto Rico	20	13	33	25	14	39	72
Virgin Islands, U.S.	3		3				3
Unknown	122	71	193	505	181	686	879
Institute Total	8,706	5,470	14,176	6,844	1,775	8,619	22,795

Enrollment by Georgia County of Residence*, Fall 2017

*Excludes international students

County	Undergraduate	Graduate	Institute Total
Appling	2		2
Baker	2		2
Baldwin	10	4	14
Banks	4	2	6
Barrow	22	1	23
Bartow	39	7	46
Ben Hill	5		5
Berrien	3		3
Bibb	88	11	99
Bleckley	9	1	10
Brantley	3		3
Brooks	2		2
Bryan	41	5	46
Bulloch	38	9	47
Burke	4		4
Butts	6		6
Calhoun	2		2
Camden	15	3	18
Carroll	69	10	79
Catoosa	29	7	36
Charlton	1		1
Chatham	156	31	187
Chattahoochee		1	1
Chattooga	6	3	9
Cherokee	312	47	359
Clarke	41	16	57
Clayton	79	10	89
Cobb	1,143	344	1,487
Coffee	9		9
Colquitt	6		6
Columbia	164	29	193
Cook	3		3
Coweta	143	16	159
Crawford	2	1	3
Crisp	1		1
Dade	5		5
Dawson	11	2	13
Decatur	12	9	21
DeKalb	735	310	1,045
Dodge	5		5
Dougherty	35	2	37
Douglas	75	9	84
Early	1		1
Effingham	34	4	38
Elbert	2	2	4

Enrollment by Georgia County of Residence*, Fall 2017

*Excludes international students

County (grou..	Undergraduate	Graduate	Institute Total
Emanuel	6		6
Evans	2	2	4
Fannin	10	1	11
Fayette	299	40	339
Floyd	39	8	47
Forsyth	353	88	441
Franklin	7	1	8
Fulton	2,248	833	3,081
Gilmer	7		7
Glynn	50	2	52
Gordon	19	2	21
Grady	4	1	5
Greene	3		3
Gwinnett	1,682	264	1,946
Habersham	18		18
Hall	131	15	146
Haralson	6	1	7
Harris	20	2	22
Hart	5	1	6
Heard	2		2
Henry	150	14	164
Houston	115	22	137
Irwin	3		3
Jackson	40	3	43
Jasper	3		3
Jeff Davis	2		2
Jefferson	1		1
Jones	6	1	7
Lamar	10		10
Lanier	2		2
Laurens	6	3	9
Lee	21	6	27
Liberty	9	3	12
Lincoln	1		1
Lowndes	48	4	52
Lumpkin	10	4	14
Macon	4		4
Madison	3	1	4
McDuffie	2		2
McIntosh	1	1	2
Meriwether	3		3
Mitchell	5		5
Monroe	8	1	9
Montgomery	1		1
Morgan	17	1	18

Enrollment by Georgia County of Residence*, Fall 2017

*Excludes international students

County (group)	Undergraduate	Graduate	Institute Total
Murray	6		6
Muscogee	94	11	105
Newton	46	5	51
Oconee	69	1	70
Oglethorpe	1		1
Paulding	48	11	59
Peach	6	5	11
Pickens	6	1	7
Pierce	4		4
Pike	14	1	15
Polk	5	1	6
Pulaski	1	1	2
Putnam	5	1	6
Rabun	5	1	6
Richmond	52	12	64
Rockdale	38	13	51
Schley	1		1
Screven	3	1	4
Spalding	14	2	16
Stephens	4		4
Sumter	7		7
Tattnall	1		1
Telfair	2		2
Thomas	25	1	26
Tift	19		19
Toombs	11	2	13
Towns	6		6
Treutlen	1		1
Troup	46	4	50
Turner	2		2
Twiggs	2		2
Union	7	1	8
Upson	3	2	5
Walker	10	1	11
Walton	43	4	47
Ware	11	1	12
Washington	12		12
Wayne	6		6
White	7	2	9
Whitfield	44	9	53
Wilkes	1	1	2
Worth	2		2
Glascocock	1		1
Unknown	28	138	166
Institute Total	9,475	2,454	11,929



Degrees Awarded

2017 Fact Book

Summary of Degrees Conferred by College and Degree Level, Ten-Year History

College	Degree Level	2008	2009	2010	2011	2012	2013	2014	2015	2016	2017
College of Computing	Bachelor's	169	187	179	234	222	245	286	317	388	477
	Master's	184	298	218	271	179	208	205	190	326	707
	Ph.D.	32	31	40	33	47	53	46	53	52	34
	Total	385	516	437	538	448	506	537	560	766	1,218
College of Design	Bachelor's	168	165	148	161	148	114	100	97	76	69
	Master's	104	158	186	191	192	177	136	167	201	173
	Ph.D.	2	7	10	14	14	9	8	9	15	17
	Total	274	330	344	366	354	300	244	273	292	259
College of Engineering	Bachelor's	1,459	1,543	1,644	1,745	1,663	1,823	1,978	1,986	2,142	2,343
	Master's	820	1,034	948	988	1,042	1,051	1,103	1,040	1,227	1,083
	Ph.D.	327	332	263	294	309	312	378	358	346	358
	Total	2,606	2,909	2,855	3,027	3,014	3,186	3,459	3,384	3,715	3,784
College of Sciences	Bachelor's	252	256	242	270	272	321	314	274	250	219
	Master's	105	113	120	111	105	112	129	132	147	143
	Ph.D.	81	102	82	86	94	90	102	81	91	74
	Total	438	471	444	467	471	523	545	487	488	436
Ivan Allen College	Bachelor's	195	183	241	242	219	209	198	194	167	130
	Master's	86	83	75	77	92	78	84	47	59	80
	Ph.D.	14	11	15	14	15	15	13	16	17	21
	Total	295	277	331	333	326	302	295	257	243	231
Scheller College of Business	Bachelor's	340	361	388	410	349	409	392	407	397	370
	Master's	130	190	223	251	320	335	330	306	336	338
	Ph.D.	11	7	6	8	4	8	5	9	10	4
	Total	481	558	617	669	673	752	727	722	743	712
Institute	Bachelor's	2,583	2,695	2,842	3,062	2,873	3,121	3,268	3,275	3,420	3,608
	Master's	1,429	1,876	1,770	1,889	1,930	1,961	1,987	1,882	2,296	2,524
	Ph.D.	467	490	416	449	483	487	552	526	531	508
Institute Total		4,479	5,061	5,028	5,400	5,286	5,569	5,807	5,683	6,247	6,640

Bachelor's Degrees Conferred by College, Ten-Year History

College	Major	2008	2009	2010	2011	2012	2013	2014	2015	2016	2017
College of Computing	Computational Media	13	14	22	47	42	25	40	29	23	19
	Computer Science	156	173	157	187	180	220	246	288	365	458
	Total	169	187	179	234	222	245	286	317	388	477
College of Design	Architecture	69	72	68	75	61	56	46	50	37	29
	Building Construction	65	55	56	38	47	19	21	17	9	
	Industrial Design	34	38	24	48	40	39	33	30	30	40
	Total	168	165	148	161	148	114	100	97	76	69
College of Engineering	Aerospace Engineering	117	112	139	147	117	146	142	157	162	211
	Biomedical Engineering	122	134	143	157	147	175	231	214	255	257
	Chemical and Biomolecular Eng	88	98	100	128	142	158	165	172	189	214
	Civil Engineering	144	201	174	183	179	170	152	152	130	154
	Civil Engineering - REP	25	20	19	21	25	21				
	Computer Engineering	89	53	67	72	64	72	84	109	129	131
	Computer Engineering - REP	6	3	8	3	1	1				
	Electrical Engineering	226	195	210	183	188	225	230	239	242	245
	Electrical Engineering - REP	15	17	10	17	15	13	3			
	Environmental Engineering	1	6	15	14	36	32	46	32	39	39
	Industrial Engineering	236	281	302	312	282	315	350	345	393	404
	Materials Science & Engr	36	26	23	29	23	30	48	41	69	73
	Mechanical Engineering	310	331	358	394	365	362	450	479	510	594
	Mechanical Engineering - REP	7	16	29	17	31	41	4			
	Nuclear & Radiological Engr	25	32	27	39	22	38	55	32	23	21
	Polymer & Fiber Engr	12	18	20	29	26	24	18	14		
	Total		1,459	1,543	1,644	1,745	1,663	1,823	1,978	1,986	2,141
College of Sciences	Applied Mathematics	14	19	21	28	33	39	20	34	20	23
	Applied Physics	3	1	1		2		3		3	2
	Biochemistry	4	17	24	49	35	65	57	38	49	40
	Biology	83	101	92	103	96	108	119	95	77	73

Bachelor's Degrees Conferred by College, Ten-Year History

College	Major	2008	2009	2010	2011	2012	2013	2014	2015	2016	2017
College of Sciences	Chemistry	40	29	31	21	24	27	25	19	15	12
	Discrete Mathematics	7	1	8	8	8	5	6	4	9	9
	Earth & Atmospheric Sciences	20	17	10	15	14	9	18	6	14	14
	Physics	36	36	30	22	29	33	28	34	30	26
	Psychology	45	35	25	24	31	35	38	44	33	20
	Total	252	256	242	270	272	321	314	274	250	219
Ivan Allen College	Applied Lang/Intercultural St				1	4	6	9	21	18	11
	Computational Media	12	14	26	39	21	25	32	28	24	23
	Econ & Int'l Affairs	10	17	9	12	10	18	12	11	13	4
	Economics	29	15	21	24	18	17	25	18	21	16
	Global Econ/Mod Lang	7	3	4	5	7	4	2	7	1	
	History, Technology, & Society	20	13	14	28	20	15	26	18	15	13
	Int'l Affairs & Mod Lang	25	28	37	24	31	38	13	23	9	8
	International Affairs	50	46	64	53	45	22	29	26	34	20
	Lit., Media, & Communication								2	24	23
	Public Policy	16	14	14	20	13	18	17	14	8	12
	Science, Technology, & Culture	26	33	52	36	50	46	33	26		
Total	195	183	241	242	219	209	198	194	167	130	
Scheller College of Business	Business Administration						93	113	189	333	369
	Management	340	361	388	410	349	316	279	218	64	1
	Total	340	361	388	410	349	409	392	407	397	370
Institute Total		2,583	2,695	2,842	3,062	2,873	3,121	3,268	3,275	3,419	3,608

Master's Degrees Conferred by College, Ten-Year History

College	Major	2008	2009	2010	2011	2012	2013	2014	2015	2016	2017
College of Computing	Analytics									4	7
	Bioengineering	1	2								
	Computational Sci & Engr			5	6	10	25	14	17	37	35
	Computer Science	138	249	180	213	123	143	153	125	249	583
	Human-Computer Interaction	23	23	19	21	24	19	18	30	24	26
	Information Security	22	24	14	31	22	21	20	18	12	56
	Total	184	298	218	271	179	208	205	190	326	707
College of Design	Architectural Technology										6
	Architecture	42	65	54	71	62	61	45	48	72	31
	Building Construction	27	36	69	47	62	47	35	35	48	44
	City Planning	33	37	49	57	39	42	37	36	37	46
	Geographic Info Science & Tech								3	5	8
	Human-Computer Interaction								2	10	9
	Industrial Design	1	16	9	12	14	9	6	25	18	11
	Music Technology	1	4	5	4	13	9	9	12	9	16
	Urban Design					2	9	4	6	2	2
Total	104	158	186	191	192	177	136	167	201	173	
College of Engineering	Aerospace Engineering	121	120	127	138	143	132	147	125	143	115
	Analytics									11	15
	Applied Systems Engineering					8	15	26	32	28	22
	Bioengineering	6	11	5	7	11	8	7	6	4	4
	Biomedical Engineering	2	4	1	1	2		2	1	2	2
	Biomedical Innovation/Develop								10	21	30
	Chemical Engineering	5	18	15	10	13	25	27	20	20	22
	Civil Engineering	49	79	74	87	78	77	89	93	85	97
	Computational Sci & Engr				1	1	1	2	8	16	37
	Electrical & Computer Engr	272	341	307	317	343	290	335	334	457	311
Engineering Sci & Mechanics	3	2	3	3	3	4	3	4	2	4	

Master's Degrees Conferred by College, Ten-Year History

College	Major	2008	2009	2010	2011	2012	2013	2014	2015	2016	2017	
College of Engineering	Environmental Engineering	14	19	20	22	21	33	29	29	37	30	
	Health Systems	11	11	16	10	7	5	5	7	6	6	
	Industrial Engineering	88	113	105	100	72	83	61	26	31	30	
	International Logistics	5	24	32	2	14	18	15	9	9	2	
	Materials Science & Engr	13	11	5	12	15	12	14	18	16	9	
	Mechanical Engineering	149	184	153	187	226	213	185	204	204	200	
	Medical Physics	18	17	17	16	7	13	11	10	11	2	
	Nuclear & Radiological Engr	7	7	4	8	11	12	13	9	10		
	Nuclear Engineering									5	8	6
	Operations Research	22	22	24	32	11	26	36	19	24	31	
	Paper Science Engineering	3	3	1						1	1	
	Polymer, Textile & Fiber Engr	3	1	2	2	2						
	Quanta/Computation Fin	21	30	25	14	22	20	34	16	17	13	
	Statistics	8	17	12	18	20	18	11	8	10	20	
	Supply Chain Engineering					12	46	51	46	54	48	
Sustainable Electrical Energy											27	
	Total	820	1,034	948	987	1,042	1,051	1,103	1,040	1,227	1,083	
College of Sciences	Bioinformatics	8	13	16	10	10	13	20	15	20	23	
	Biology	8	6	9	10	12	8	8	12	7	5	
	Chemistry	15	22	17	16	17	14	19	21	9	19	
	Computational Sci & Engr				3	1		2	1	9		
	Earth & Atmospheric Sciences	13	13	17	11	12	9	13	8	7	11	
	Human-Computer Interaction	2		2	2	1	1	4	6	4	7	
	Mathematics	8	13	13	16	8	12	9	15	21	8	
	Physics	11	10	8	11	10	16	15	6	19	19	
	Prosthetics & Orthotics	8	10	10	10	9	10	11	14	14	12	
	Psychology	11	8	11	10	8	9	10	11	11	13	
	Quanta/Computation Fin	19	16	16	12	16	14	9	17	17	21	

Master's Degrees Conferred by College, Ten-Year History

College	Major	2008	2009	2010	2011	2012	2013	2014	2015	2016	2017
College of Sciences	Statistics	2	2	1		1	6	9	6	9	5
	Total	105	113	120	111	105	112	129	132	147	143
Ivan Allen College	Digital Media	7	13	12	16	17	7	14	9	11	16
	Economics	14	14	12	19	22	19	21	1	16	18
	Hist & Soc of Tech & Science	8	8	7	5	6	6	3	4	6	4
	Human-Computer Interaction	7	2	5	2	5	4	7	2	5	7
	International Affairs	38	38	25	24	25	16	19	20	12	26
	Public Policy	12	8	14	11	17	26	20	11	9	9
	Total	86	83	75	77	92	78	84	47	59	80
Scheller College of Business	Analytics									14	14
	Business Administration						2	75	138	176	180
	Management	76	90	116	154	226	237	138	65	13	5
	Management of Technology	28	34	35	46	40	47	46	54	62	64
	MBA-Global Business	16	49	52	44	31	31	54	34	58	57
	Quanta/Computation Fin	10	17	20	7	23	18	17	15	13	18
	Total	130	190	223	251	320	335	330	306	336	338
Institute Total		1,429	1,876	1,770	1,888	1,930	1,961	1,987	1,882	2,296	2,524

Ph.D. Degrees Conferred by College, Ten-Year History

College	Major	2008	2009	2010	2011	2012	2013	2014	2015	2016	2017
College of Computing	Algor, Combntcrs & Optimiztion	2	2	2	2	3	3		5	3	3
	Bioinformatics					1	1		1		
	Computational Sci & Engr			1	2	2	1	4	4	2	2
	Computer Science	29	26	36	25	31	32	39	30	40	24
	Human-Centered Computing	1	3	1	4	10	13	1	6	3	4
	Robotics						3	2	7	4	1
	Total	32	31	40	33	47	53	46	53	52	34
College of Design	Architecture	2	7	10	14	13	3	3	3	10	10
	Building Construction							1	4	4	2
	City & Regional Planning					1	6	4	2	1	5
	Total	2	7	10	14	14	9	8	9	15	17
College of Engineering	Aerospace Engineering	39	44	29	31	38	33	47	35	33	46
	Algor, Combntcrs & Optimiztion	1	1	1	2		2		1		1
	Bioengineering	27	27	23	20	23	19	23	13	17	12
	Bioinformatics		1					2			
	Biomedical Engineering	10	18	10	16	10	9	19	14	19	15
	BMED Joint Emory/PKU						1	3	1	1	7
	Chemical Engineering	30	34	30	41	22	22	36	41	34	39
	Civil Engineering	18	9	16	25	31	35	22	32	27	22
	Computational Sci & Engr							1			
	Electrical & Computer Engr	89	92	75	72	105	97	99	108	92	97
	Engineering Sci & Mechanics										1
	Environmental Engineering	9	9	5	8	5	6	15	9	5	7
	Industrial Engineering	29	22	21	21	20	25	21	19	10	13
	Materials Science & Engr	27	17	9	15	18	11	15	16	32	19
	Mechanical Engineering	40	38	29	26	24	33	51	49	48	53
Nuclear & Radiological Engr	1	1	8	4	3	5	7	6	8	8	
Nuclear Engineering						1			3	1	

Ph.D. Degrees Conferred by College, Ten-Year History

College	Major	2008	2009	2010	2011	2012	2013	2014	2015	2016	2017
College of Engineering	Operations Research						3	3	5	9	15
	Paper Science Engineering	2	4	1							
	Polymer, Textile & Fiber Engr	5	14	6	13	8	10	8	9	4	2
	Robotics					2		6		4	
	Textile Engineering		1								
	Total		327	332	263	294	309	312	378	358	346
College of Sciences	Algor, Combntrcs & Optimiztion	1	2		1	4	3	1	2	1	1
	Applied Physiology			1	1	4	2	3	4	5	2
	Bioinformatics	2	4	1	3	1	5	3	3	3	3
	Biology	10	9	11	7	12	10	16	7	7	8
	Chemistry	26	41	27	32	24	26	28	27	30	22
	Computational Sci & Engr						1	2	2		1
	Earth & Atmospheric Sciences	14	6	9	10	14	6	17	6	10	7
	Mathematics	6	11	9	8	6	13	7	9	7	3
	Paper Science Engineering		1	1		1	4				
	Physics	17	19	10	20	13	8	13	13	20	18
	Psychology	5	9	13	4	15	12	12	8	8	9
Total		81	102	82	86	94	90	102	81	91	74
Ivan Allen College	Digital Media		1	5	4		5	1	4	4	1
	Economics								1	3	4
	Hist & Soc of Tech & Science	1	2	2	1	3	1	2	2	2	2
	Int'l Affairs, Sci, & Techny							1	1	1	4
	Public Policy	6	3	3	5	5	6	6	5	5	5
	Public Policy/Joint Progrm	7	5	5	4	7	3	3	3	2	5
Total		14	11	15	14	15	15	13	16	17	21
Scheller College of Business	Management	11	7	6	8	4	8	5	9	10	4
	Total	11	7	6	8	4	8	5	9	10	4
Institute Total		467	490	416	449	483	487	552	526	531	508

Degrees Conferred by College, Ethnicity, and Gender, AY 2017

Degree Le..	College Name	Asian		Black or African American		Hispanic or Latino		White		Other/Unknown		International		Institute		Institute Total
		Male	Female	Male	Female	Male	Female	Male	Female	Male	Female	Male	Female	Male	Female	
Bachelor's	College of Computing	93	33	16	2	21	5	168	47	16	4	51	21	365	112	477
	College of Design	2	3	5	2	6	3	13	22	2	1	2	8	30	39	69
	College of Engineering	312	124	70	39	129	43	863	337	58	34	224	110	1,656	687	2,343
	College of Sciences	23	18	3	10	9	11	57	67	2	4	6	9	100	119	219
	Ivan Allen College	6	13	9	5	4	6	33	48	1	2	2	1	55	75	130
	Scheller College of Business	26	35	16	14	11	11	117	105	6	10	8	11	184	186	370
	Total	462	226	119	72	180	79	1,251	626	85	55	293	160	2,390	1,218	3,608
Master's	College of Computing	66	20	7	6	20	1	243	20	14		230	80	580	127	707
	College of Design	7	3	8	7	6	6	45	25	1	4	35	26	102	71	173
	College of Engineering	58	28	18	3	25	7	265	64	21	5	430	159	817	266	1,083
	College of Sciences	10	5	6	5	3	3	31	24	3	2	30	21	83	60	143
	Ivan Allen College	1	4	1	1	2	1	22	22	1		10	15	37	43	80
	Scheller College of Business	31	11	29	12	19	6	137	34	4	3	41	11	261	77	338
	Total	173	71	69	34	75	24	743	189	44	14	776	312	1,880	644	2,524
Ph.D.	College of Computing	3						6	1	1		21	2	31	3	34
	College of Design		1	1				2	3			6	4	9	8	17
	College of Engineering	19	6	6	5	6	2	97	22	5	1	156	33	289	69	358
	College of Sciences	5	1			2	1	19	10			23	13	49	25	74
	Ivan Allen College	1	1					2	4	1		5	7	9	12	21
	Scheller College of Business	1	1									1	1	2	2	4
	Total	29	10	7	5	8	3	126	40	7	1	212	60	389	119	508
Institute Total		664	307	195	111	263	106	2,120	855	136	70	1,281	532	4,659	1,981	6,640

Degrees Conferred by Country of Residence, AY 2017

Country	Bachelor's	Master's	Ph.D.	Institute Total
Afghanistan		1		1
Angola	2			2
Australia	1	1	1	3
Azerbaijan		1		1
Bahamas	1			1
Bangladesh	1	4	3	8
Belarus		1		1
Benin		1		1
Bolivia		1	1	2
Brazil	1	5		6
Bulgaria		2		2
Burkina Faso	2			2
Burma (Myanmar)	2			2
Canada	5	12	4	21
Chile		4	6	10
China	160	360	94	614
Colombia	3	10	4	17
Congo	1			1
Costa Rica		1		1
Cyprus			1	1
Czech Republic		2		2
Dem. Republic of the Congo	1			1
Dominican Republic		1		1
Ecuador	1	3		4
Egypt	4	3	1	8
El Salvador	2		1	3
Ethiopia		1		1
France	1	79	4	84
Gaza Strip			1	1
Germany	4	10	1	15
Ghana	2	1		3
Greece		2	3	5
Guatemala	2	2		4
Honduras	2			2
Hong Kong	6	2	1	9
Hungary	1	1		2
India	69	334	40	443
Indonesia	12	11	2	25
Iran	1	12	13	26
Israel	4	3		7
Italy	2	7	2	11
Jamaica		1		1
Jan Mayen	1			1
Japan	4	2		6
Kenya		1		1

Degrees Conferred by Country of Residence, AY 2017

Country	Bachelor's	Master's	Ph.D.	Institute Total
Korea, Republic of (South)	79	29	41	149
Kyrgyzstan			1	1
Latvia			1	1
Lebanon	1	2		3
Macao	1			1
Malaysia	3	5	1	9
Mexico	3	9	1	13
Mongolia	3			3
Morocco		13	2	15
Nepal	1	4		5
New Zealand	1	1		2
Nicaragua		1		1
Niger	1			1
Nigeria	7	4	3	14
Norway	1	1		2
Oman		1		1
Pakistan	3	19	6	28
Panama	7	7		14
Peru	2	3	1	6
Philippines		1		1
Portugal	1			1
Romania		2		2
Russia		1		1
Rwanda			1	1
Saint Lucia		1		1
Saudi Arabia		62	1	63
Serbia (Prior to 2001)	1			1
Singapore	3	8		11
Spain	2	2		4
Sri Lanka	1			1
Sweden		1		1
Switzerland		2		2
Taiwan	8	14	14	36
Thailand	2	1	1	4
Trinidad and Tobago	5		1	6
Tunisia	2	1		3
Turkey	2	5	10	17
United Arab Emirates		1		1
United Kingdom	3	1	1	5
Uruguay		1		1
Venezuela	3	1		4
Vietnam	8	2	2	12
West Bank	1			1
Zimbabwe			1	1
Institute Total	453	1,088	272	1,813

Degrees Conferred by State of Residence, AY 2017

State/U.S. Territory	Bachelor's	Master's	Ph.D.	Institute Total
Alabama	24	16	3	43
Alaska	2	1		3
Arizona	11	13	3	27
Arkansas	1	2	1	4
California	76	75	16	167
Colorado	22	13	4	39
Connecticut	14	15		29
Delaware	9			9
District of Columbia	3	2	1	6
Florida	152	68	11	231
Georgia	2,073	669	76	2,818
Hawaii	1	1		2
Idaho		2		2
Illinois	41	29	3	73
Indiana	5	7		12
Iowa		1	1	2
Kansas	5	5	1	11
Kentucky	13	6	1	20
Louisiana	12	5	2	19
Maine	3	3		6
Maryland	50	21	4	75
Massachusetts	23	27	3	53
Michigan	8	8	1	17
Minnesota	2	5	1	8
Mississippi	2	2	1	5
Missouri	16	4		20
Montana		1		1
Nebraska	6			6
Nevada	5	3		8
New Hampshire	9	7	1	17
New Jersey	61	30	5	96
New Mexico		3	2	5
New York	44	39	10	93
North Carolina	59	23	3	85
Ohio	22	19	5	46
Oklahoma	1	2		3
Oregon	6	7	3	16
Pennsylvania	37	27	9	73
Rhode Island	2	4		6

Degrees Conferred by State of Residence, AY 2017

State/U.S. Territory	Bachelor's	Master's	Ph.D.	Institute Total
South Carolina	23	12	4	39
South Dakota	1	1		2
Tennessee	46	21	3	70
Texas	63	71	6	140
Utah		7		7
Vermont	3			3
Virginia	52	39	3	94
Washington	9	25	2	36
West Virginia		2	1	3
Wisconsin	5	10		15
Puerto Rico	12	2	1	15
Virgin Islands, U.S.	1	1		2
Not Reported	120	80	45	245
Institute Total	3,155	1,436	236	4,827

Degrees Conferred by Georgia County of Residence, AY 2017

County	Bachelor's	Master's	Ph.D.	Institute Total
Barrow	2	1		3
Bartow	1	1		2
Bibb	2	1		3
Bryan	2	1		3
Bulloch	4	1		5
Camden	2			2
Carroll	2	1		3
Catoosa	3			3
Chatham	5	6		11
Chattooga		1		1
Cherokee	12	7		19
Clarke	2	1		3
Clayton	4	3		7
Cobb	79	58	4	141
Colquitt		1		1
Columbia	18	2		20
Cook	1			1
Coweta	6	2		8
DeKalb	45	41	1	87
Dooly	1			1
Dougherty		1		1
Douglas	6	3		9
Effingham	2	2		4
Fayette	9	7		16
Floyd	3	1		4
Forsyth	18	8		26
Fulton	140	141	12	293
Gilmer	1			1
Glynn	3	1		4
Gordon	1		1	2
Gwinnett	109	41	3	153
Habersham	1			1
Hall	8	2		10
Harris	1	1		2
Heard		1		1
Henry	4	1		5
Houston	2	2		4
Jackson	1	1		2
Jefferson	1			1
Jones	1			1

Degrees Conferred by Georgia County of Residence, AY 2017

County	Bachelor's	Master's	Ph.D.	Institute Total
Lamar	1			1
Lee	1			1
Liberty	2			2
Lowndes	1			1
Lumpkin	1	1		2
Morgan	2			2
Murray	1			1
Muscogee	4	6		10
Newton	2			2
Oconee		2		2
Oglethorpe	1			1
Paulding	4			4
Pickens	1			1
Richmond	3	1		4
Rockdale	6			6
Thomas		1		1
Tift	1			1
Toombs	1			1
Troup	1			1
Union	1			1
Walker	1			1
Walton	2			2
Ware	1	1		2
Wayne	1			1
White	2			2
Whitfield	3	1		4
Not Reported	1,525	315	55	1,895
Butts	1			1
Spalding	1			1
Institute Total	2,073	669	76	2,818



Institute Information

2017 Fact Book

Student Grades by College & Percent, Fall Semester 2017

College	Level	A	B	C	D	F	S*	U*	I*	W*	V*	AVG Grade
College of Computing	Lower	39.8	24.9	11.6	3.1	2.6	10.4	0.4	0.4	6.6	0.0	3.28
	Upper	62.6	23.5	6.2	0.9	0.7	0.0	0.0	0.5	5.3	0.2	3.59
	Grad	51.8	17.1	3.1	1.0	1.5	4.2	0.1	0.5	17.9	2.8	3.64
	Computing Total	51.1	20.2	5.7	1.5	1.6	4.9	0.1	0.5	12.7	1.7	3.54
College of Design	Lower	70.6	19.5	2.4	0.8	0.9	2.9	0.1	1.1	1.8	0.1	3.71
	Upper	77.4	15.0	3.0	0.8	0.6	0.5	0.0	0.2	2.4	0.1	3.76
	Grad	63.5	20.0	1.8	0.3	0.3	5.8	0.2	0.9	2.4	4.8	3.71
	Design Total	70.1	18.2	2.4	0.6	0.6	3.2	0.1	0.7	2.2	1.9	3.73
College of Engineering	Lower	47.4	28.2	12.0	3.0	1.7	2.1	0.1	0.4	5.0	0.2	3.32
	Upper	46.9	29.3	12.3	2.4	1.3	0.9	0.0	0.4	4.0	2.3	3.33
	Grad	39.6	15.5	2.1	0.2	0.1	32.2	0.3	0.4	3.3	6.3	3.65
	Engineering Total	44.7	24.7	9.0	1.8	1.0	11.0	0.1	0.4	4.0	3.2	3.40
Ivan Allen College	Lower	63.1	23.2	5.5	1.0	0.6	2.3	0.1	0.4	3.5	0.3	3.60
	Upper	66.6	20.6	3.5	0.4	0.9	2.7	0.0	0.5	4.4	0.3	3.68
	Grad	49.6	12.6	1.9	0.6	0.6	22.6	0.2	0.7	2.5	8.7	3.72
	Ivan Allen Total	63.2	21.5	4.6	0.8	0.7	4.0	0.1	0.5	3.7	0.9	3.63
Scheller College of Business	Lower	45.8	29.7	12.2	4.4	0.9	1.1	0.0	0.0	5.7	0.1	3.27
	Upper	61.2	25.7	6.7	1.2	0.9	1.1	0.0	0.2	2.8	0.2	3.55
	Grad	74.0	16.8	1.8	0.2	0.1	3.5	0.0	0.3	1.0	2.4	3.77
	Scheller Total	65.6	21.8	5.0	1.1	0.5	2.3	0.0	0.2	2.3	1.3	3.62
College of Sciences	Lower	47.9	30.5	11.6	2.8	1.6	0.7	0.0	0.4	4.5	0.1	3.33
	Upper	48.6	25.7	10.4	2.4	1.5	1.4	0.0	0.6	8.1	1.3	3.38
	Grad	38.8	9.2	1.1	0.1	0.1	33.1	0.3	0.4	2.8	14.2	3.76
	Sciences Total	46.6	26.2	9.7	2.3	1.3	5.9	0.1	0.4	5.0	2.5	3.38
College of Registrar	Lower	86.4	2.5	0.3	0.2	0.2	6.8	0.3	0.0	1.1	2.2	3.96
	Upper	3.8	1.8	0.7	0.1	0.0	13.5	0.0	0.0	0.2	79.9	3.43
	Grad	4.6	0.0	0.0	0.0	0.0	49.8	0.7	0.0	0.3	44.6	4.00
	Registrar Total	54.6	1.9	0.4	0.1	0.1	15.3	0.3	0.0	0.8	26.5	3.95
Institute	Lower	52.8	25.8	9.5	2.4	1.4	3.0	0.1	0.4	4.4	0.3	3.43
	Upper	53.1	25.5	9.1	1.8	1.1	1.4	0.0	0.4	4.4	3.2	3.45
	Grad	49.3	15.5	2.2	0.5	0.6	17.3	0.2	0.5	7.9	6.0	3.68
	Institute Total	51.8	22.4	7.0	1.6	1.1	7.0	0.1	0.4	5.5	3.1	3.50

*S Satisfactory completion of a course taken under pass/fail, or in which no other letter grade may be assigned

*U Unsatisfactory completion of a course taken under pass/fail, or in which no other letter grade may be assigned

*I Incomplete

*W Withdrew

*V Audit (no academic achievement implied)

Student Semester Credit Hours Earned by College and Division, Fiscal Years 2013-2017

	2013	2014	2015	2016	2017
College of Computing					
Lower Level	21,147	22,749	24,429	26,756	27,375
Upper Level	11,549	13,125	16,714	19,561	23,151
Graduate	18,376	20,006	34,331	45,108	56,426
Computing Total	51,072	55,880	75,474	91,425	106,952
College of Design					
Lower Level	7,642	7,533	8,014	7,832	7,924
Upper Level	9,453	9,191	8,308	8,397	8,871
Graduate	10,126	10,403	10,546	11,408	11,920
Design Total	27,221	27,127	26,868	27,637	28,715
College of Engineering					
Lower Level	34,618	37,188	36,590	36,545	36,338
Upper Level	88,596	93,094	96,608	98,218	97,980
Graduate	129,089	127,844	130,009	126,216	130,832
Engineering Total	252,303	258,126	263,207	260,979	265,150
Ivan Allen College					
Lower Level	48,973	44,566	44,907	45,858	42,918
Upper Level	26,175	25,053	24,987	25,286	25,939
Graduate	7,031	6,442	6,158	6,625	6,687
Ivan Allen Total	82,179	76,061	76,052	77,769	75,544
Scheller College of Business					
Lower Level	8,493	8,373	7,782	7,410	7,160
Upper Level	23,828	24,049	23,593	23,529	21,126
Graduate	20,217	19,459	19,617	20,754	22,170
Business Total	52,538	51,881	50,992	51,693	50,456
College of Sciences					
Lower Level	98,907	90,941	87,328	86,077	87,322
Upper Level	20,733	20,183	18,866	18,863	19,903
Graduate	33,613	32,980	32,852	32,181	32,662
Sciences Total	153,253	144,104	139,046	137,121	139,887
College of the Registrar					
Lower Level	2,334	2,760	2,783	3,174	2,868
Upper Level	304	444	465	439	432
Graduate	771	716	771	809	811
Registrar Total	3,409	3,920	4,019	4,422	4,111
Institute					
Lower Level	222,114	214,110	211,833	213,652	211,905
Upper Level	180,638	185,139	189,541	194,293	197,402
Graduate	219,223	217,850	234,284	243,100	261,508
Institute Total	621,975	617,099	635,658	651,045	670,815

Retention Rates for Entering Freshmen

Entering Class Summer/Fall	Retained After 1 Year	Retained After 2 Years	Retained After 3 Years	Retained After 4 Years	Retained After 5 Years	Retained After 6 Years
1996	85%	77%	73%	72%	71%	72%
1997	86%	79%	75%	74%	74%	74%
1998	86%	80%	77%	75%	75%	75%
1999	90%	83%	81%	80%	78%	79%
2000	90%	84%	81%	79%	79%	79%
2001	91%	84%	82%	81%	80%	80%
2002	90%	84%	82%	80%	80%	80%
2003	92%	86%	84%	82%	82%	82%
2004	92%	86%	84%	82%	82%	83%
2005	92%	87%	84%	82%	82%	82%
2006	92%	87%	84%	83%	82%	82%
2007	93%	88%	87%	84%	85%	85%
2008	93%	88%	86%	85%	84%	84%
2009	94%	90%	88%	87%	88%	88%
2010	95%	92%	90%	89%	89%	89%
2011	95%	91%	89%	88%	88%	89%
2012	96%	92%	90%	90%	90%	
2013	96%	94%	93%	92%		
2014	97%	94%	92%			
2015	97%	95%				
2016	97%					

Graduation Rates for Entering Freshmen

Entering Class Summer/Fall	Graduated by 4th Year	Graduated by 5th Year	Graduated by 6th Year	Graduated by 7th Year	Graduated by 8th Year
1996	23%	59%	68%	70%	71%
1997	24%	60%	69%	72%	73%
1998	26%	62%	72%	74%	75%
1999	29%	67%	76%	78%	78%
2000	34%	69%	77%	79%	79%
2001	33%	69%	78%	79%	80%
2002	31%	70%	77%	79%	79%
2003	31%	71%	79%	81%	82%
2004	33%	72%	80%	81%	82%
2005	31%	72%	79%	81%	81%
2006	34%	72%	79%	81%	82%
2007	41%	76%	82%	84%	84%
2008	37%	75%	82%	83%	84%
2009	40%	78%	85%	87%	87%
2010	41%	80%	86%	88%	
2011	39%	80%	85%		
2012	40%	82%			
2013	46%				

Alumni as of June 2017

Top Countries of Residence

United States of America	141,220
India	1,457
China	1,429
France	1,275
South Korea	723
Germany	409
Taiwan	274
Canada	266
Singapore	236
United Kingdom	182

Top States of Residence

Georgia	65,602
Florida	9,606
California	8,754
Texas	7,066
North Carolina	5,011
Virginia	4,613
South Carolina	3,831
Tennessee	3,275
Alabama	2,963
Maryland	2,577

Top Employers

IBM Corporation	1,006
Delta Air Lines, Inc.	965
Southern Company	954
Lockheed Martin	908
AT&T Inc.	894
General Electric Company	688
The Coca-Cola Company	470
Boeing Company	435
Cisco Systems, Inc.	428
Intel Corporation	425

Career Discovery & Development

Top Interviewing Companies, FY 2017

Microsoft	Manhattan Associates
Bloomberg	SunTrust Bank
ExxonMobil	Accenture
Capital One	Ernst & Young

Experiential Learning Programs, FY 2016-2017

Participants, FY 2016, 2017

Undergraduate Cooperative Program	1,537
Professional Internship Program	1,150
Graduate Cooperative Program	1,061
Co-op Degrees Earned	482

International Programs

ACADEMIC INFORMATION

Georgia Tech strongly believes in the importance of international experience for students. Student interest in international programs has been growing steadily for two decades. Georgia Tech is committed to expanding opportunities for students to participate in academically and culturally valuable international programs.

Georgia Tech Students Abroad by Year 2007-08 through 2016-17*

Year	Number
2007-08	1,114
2008-09	1,189
2009-10	1,279
2010-11	1,391
2011-12	1,478
2012-13	1,577
2013-14	1,816
2014-15	1,967
2015-16	2,111
2016-17	2,215

*Year is equal to Fall Semester through Summer Semester of the following year.

Top Ten Locations for International Experience

Location	Number of Students
France	606
China	254
England	233
Spain	163
Ireland	129
Germany	85
Japan	82
Singapore	48
Australia	46
Italy*	41
South Korea*	41

*Tied for #10

International Programs

ACADEMIC INFORMATION

College Comparison of Undergraduate Students Fall 2016 - Summer 2017

College	International Experience*
Design	103
Computing	197
Engineering	1,284
Ivan Allen	150
Business	337
Science	144
Total	2,215

*International Experience includes Study, Internships, or International Academic Project Abroad

Global Internship Program

Since 2014, the Global Internship Program (GIP) has been housed in the Office of International Education. GIP facilitates overseas internships for Georgia Tech students in a variety of settings, including corporate, academic, research, non-profit, governmental, and service. Note that global internship participation numbers are included in the overall international experience totals.

Year	Number of global interns
2013-14	138
2014-15	122
2015-16	150
2016-17	188

2016-17 Global Internship Participation by College

College	Number of Participants	Percentage of Participation
College of Design	6	3%
College of Computing	31	16%
College of Engineering	133	71%
College of Sciences	7	4%
Ivan Allen College	10	5%
Scheller College of Business	1	(<1%)
Institute Total	188	100%

International Programs

ACADEMIC INFORMATION

Global Internship Participants by Level

Year	N	B.S.	%B.S.	M.S.	%M.S.	Ph.D.	%Ph.D.
2013-14	138	103	75%	17	12%	18	13%
2014-15	122	91	75%	15	12%	16	13%
2015-16	150	108	72%	21	14%	21	14%
2016-17	188	135	72%	29	15%	24	13%

Top Global Internship Employers in 2016-17

Company	Number of Global Interns
Siemens	17
NTT	8
Microsoft	6
Amazon	5
TU Munich PREP Summer Research Program	5
BMW	4
Rakuten	4
Safran	4

Top Global Internship Locations in 2016-17

Global Interns went to 46 countries

Country	Number of Global Interns
Germany	44
France	20
Japan	19
India	17
China	14

International Programs

ACADEMIC INFORMATION

International Plan

The International Plan is a challenging undergraduate academic program that develops a student's global competence within the context of his or her major. It is an optional, degree-long program that integrates overseas experiences, language proficiency, and globally-focused coursework into 27 participating majors (out of 36). It builds on existing undergraduate degree requirements and international opportunities. The IP is intended to be completed within the normal time frame of a four-year undergraduate degree. Completion of the International Plan is recognized by a designation on the student's diploma indicating a commitment to developing global competence as part of the degree, e.g., "B.S. in Electrical Engineering: International Plan."

College	Total IP Participants as of May 12, 2017	New Participants Joined IP in AY2016-17	Number of IP Graduates in AY1016-17	Total Number of IP Graduates Since Inception
Design	21	9	2	19
Computing	102	26	1	24
Engineering	442	110	20	121
Sciences	31	10	1	7
Ivan Allen	104	42	3	63
Scheller	47	11	3	19
Institute Total	747	208	30	253

International Student and Scholar Services

International Student and Scholar Services (ISSS), a unit of the Office of International Education, serves as a resource and advocate for the large and diverse population of international students and scholars. ISSS strives to create an environment where international students and scholars are able to make a well-integrated transition to Georgia Tech through diverse cultural, educational and leadership opportunities. In addition to serving enrolled students, ISSS also provides services to graduated students completing training in their field of study using Optional Practical Training (F-1 graduates) or Academic Training (J-1 students). OIE serves a vibrant community of Exchange Visitors who come to Tech to conduct research, teaching or related scholarly activities. Since 2013, the Exchange Visitors include student interns. Welcoming a community that includes students and scholars from around the world reinforces the goal of graduating good global citizens.

Year	F/J Student Visas	Post-Graduation Student Visas (OPT/AT)	J Student Interns	J Scholars	Institute Total
2013-14	4,301	885	97	781	6,064
2014-15	4,416	989	194	815	6,414
2015-16	4,703	1,188	212	976	7,079
2016-17	4,751	1,346	188	767	7,052

Housing

Housing Capacity & Occupancy, Fall 2017			
Student Housing	Capacity	Occupancy	% Occupied
Single	9,848	9,793	99.44%
Married	222	222	100.00%
Total Student	10,070	10,015	99.45%
Greek Housing	Capacity	Occupancy	% Occupied
Sorority	255	254	99.61%
Fraternity	1,111	1,052	94.69%
Total Greek	1,366	1,306	95.61%
Total All Housing	11,436	11,321	98.99%

Library

The Georgia Tech Library Collections & Usage, FY 2017	
Number of Titles	1,971,250
Items Circulated	40,424
SmartTech Holdings	53,368
SmartTech Unique Users	510,492
Electronic Books	1,018,900
Electronic Journals	29,621
Articles and Books Downloaded (estimated)	2,735,386
Classes taught by Library Faculty & Staff	320
Library Attendance	1,433,263

Space

Square Footage by Functional Area, Fall 2017	
Area	Gross Sq. Ft.
Academic Instruction and Research	5,659,795
Academic Support	483,890
Athletic Association	911,424
Campus Support	878,902
GT Research Institute	1,007,277
Other	186,795
Parking Decks	2,227,201
Residential	3,322,045
Student Support	734,732
Institute Total*	15,412,061

* Georgia Tech has 249 buildings

Tuition and Fees, FY 2018

	Resident	Non-Resident
Undergraduate	\$12,418	\$33,014
Graduate	\$15,798	\$30,578
MBA Program	\$31,242	\$42,190

Breakdown of Mandatory Fees for Undergraduate Georgia Residents, FY 2018

Recreation-Facility	\$	108
Student Activities	\$	246
Student Athletic	\$	254
Student Health	\$	330
Transportation	\$	170
Technology	\$	214
USG Special Institutional Fee	\$	1,088
Total	\$	2,410

Estimated Charges for Undergraduate Georgia Residents, FY 2018

Tuition & Fees	\$	12,418
Dormitory Room Rent	\$	6,652
Board	\$	4,840
Miscellaneous (books, supplies, personal, etc.)	\$	4,000
Average Loan Costs	\$	60
Total Resident Freshman Cost	\$	27,970

Georgia Tech Awarded Student Aid, FY 2016-2017

Source	Number of Awards	Amount of Awards
Federal Funds	13,597	\$ 95,541,091
State Funds	8,030	\$ 58,435,304
Institutional Scholarships/Loans	5,532	\$ 49,641,602
Total GT Awarded Aid	27,159	\$ 203,617,997
Total Outside Awards	2,207	\$ 15,698,498
Total Awards	29,366	\$ 219,316,495

Revenues - FY 2017 Actual

State Appropriations	\$	267,514,001
Student Tuition and Fees	\$	361,845,835
Gifts, Grants and Contracts	\$	808,561,596
Sales, Services & Other	\$	182,747,003
Total Revenue	\$	1,620,668,435

Expenditures by Major Program Areas FY 2017 Actual

Instruction	\$	302,825,848
Research	\$	733,414,901
Public Service	\$	64,024,758
Academic Support	\$	58,633,464
Student Services	\$	37,251,927
Institutional Support	\$	108,120,489
Operation of Plant	\$	125,197,501
Scholarships and Fellowships	\$	16,342,204
Auxiliary Enterprises	\$	90,824,009
Non-Operating Expenses	\$	24,679,352
Total Expenditures	\$	1,561,314,453

Note: Financial information for the Institute's affiliated organizations has not been included in the presentation above. The Institute relies upon its affiliates for support of sponsored programs, scholarship funding, capital investments and various Institute programs.

Research Proposals and Awards for FY 2017

College	Proposals		Awards	
	Number	Amount	Number	Amount
College of Design	221	\$ 15,709,476	897	\$ 10,957,439
College of Computing	205	\$ 165,510,843	143	\$ 24,678,480
College of Engineering	1,719	\$ 946,075,345	1,164	\$ 171,962,451
Ivan Allen College	64	\$ 16,161,039	33	\$ 7,073,463
Scheller College of Business	5	\$ 431,548	3	\$ 507,000
College of Sciences	531	\$ 292,600,408	354	\$ 57,833,488
Research Centers	316	\$ 75,939,823	309	\$ 40,390,490
GT Research Institute	569	\$ 822,260,761	804	\$ 377,046,684
Institute Total	3,630	\$ 2,334,689,243	3,707	\$ 690,449,496

Research Awards by Agency for FY 2017

Awarding Agency	Amount	% Total
U. S. Air Force	\$ 172,873,140	25.0%
U. S. Army	\$ 58,402,283	8.5%
U. S. Navy	\$ 39,606,095	5.7%
U. S. Department of Commerce	\$ 6,178,082	0.9%
U. S. Department of Defense	\$ 76,311,251	11.1%
U. S. Department of Energy	\$ 13,696,082	2.0%
U. S. Department of HHS	\$ 40,882,009	5.9%
NASA	\$ 14,427,865	2.1%
National Science Foundation	\$ 64,939,369	9.4%
Other Federal Agencies	\$ 16,912,936	2.4%
Total Federal	\$ 504,229,113	73.0%
Colleges & Universities	\$ 39,510,626	5.7%
Government Owned-Contractor		
Operated Facilities	\$ 7,692,126	1.1%
Industrial	\$ 98,048,908	14.2%
Miscellaneous	\$ 31,114,889	4.5%
State and Local Governments	\$ 9,853,834	1.4%
Grand Total	\$ 690,449,496	100.0%

Office of Sponsored Programs - Research Scope

Awards Summary Detail, Fiscal Year 2017

Unit	Proposals		Awards	
	Number	Amount	Number	Amount
College of Engineering				
Aerospace	204	\$34,295,892	220	\$28,222,032
Biomedical Engineering (BME)	197	171,379,179	94	16,227,150
Civil	166	148,933,596	111	11,895,989
Chemical & Biomolecular Engineering	126	69,515,165	111	18,964,003
Electrical & Computer Engineering (ECE)	296	281,218,810	185	34,857,613
ECE - NEETRAC	91	6,780,964	95	6,529,333
Dean, College of Engineering	7	4,354,310	1	94,999
Industrial & Systems	109	30,364,146	59	7,087,719
Mechanical	374	143,218,439	220	38,814,006
Materials Science	149	56,014,844	68	9,269,609
Total	1,719	\$946,075,345	1,164	\$171,962,451
College of Design				
AMAC	128	\$1,108,772	841	\$4,874,826
Dean, College of Design	5	399,222	3	349,918
Building Construction	8	1,589,001	6	666,045
CATEA	7	4,559,178	4	1,824,892
City and Regional Planning	12	752,142	13	1,745,196
CQGRD	7	739,289	5	186,868
Digital Building Lab	30	1,213,729	11	153,249
Geographic Information Systems	4	619,491	2	175,000
Industrial Design	8	2,186,846	5	207,868
Music Technology	8	2,198,696	4	456,505
School of Architecture	4	343,111	3	317,072
Total	221	\$15,709,476	897	\$10,957,439
College of Computing				
Dean - College of Computing	8	\$26,607,550	2	\$6,590
Computational Science & Engineering	48	38,242,342	27	5,913,414
Computer Science	62	54,220,372	44	8,535,783
Interactive Computing	87	46,440,579	70	10,222,693
Total	205	\$165,510,843	143	\$24,678,480
Ivan Allen College	64	\$16,161,039	33	\$7,073,463
Scheller College of Business	5	\$431,548	3	\$507,000
College of Sciences				
Applied Physiology	1	\$544,317	6	\$1,017,461
Biology	145	100,686,680	91	18,874,627
CEISMC	23	8,566,960	21	4,350,391
Chemistry	131	87,681,137	78	15,836,050
College of Sciences	6	3,325,433	-	-
Earth & Atmospheric Sciences	94	24,325,902	59	7,319,230
Mathematics	53	13,032,916	38	3,536,615

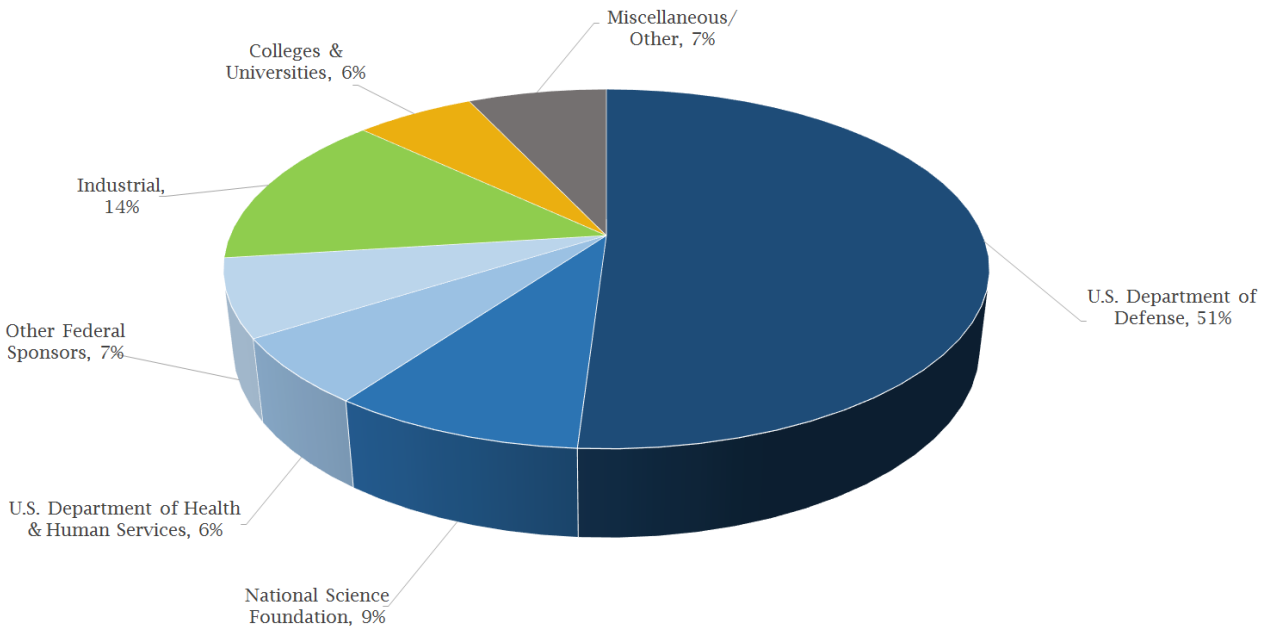
Unit	Proposals		Awards	
	Number	Amount	Number	Amount
Physics	58	48,759,108	40	4,533,841
Psychology	20	5,677,954	21	2,365,273
Total	531	\$292,600,408	354	\$57,833,488
<u>Research Centers</u>	316	\$75,939,823	309	\$40,390,490
<u>Georgia Tech Research Institute</u>				
ACL Advanced Concepts Laboratory	67	\$61,222,730	66	\$21,730,354
ASL Applied Systems Laboratory	23	22,935,253	30	9,673,354
ATAS Aerospace, Transportation & Advanced Systems	106	234,223,299	94	42,978,860
CIPHER Cybrsecurity, Infr Protection & Hrdwr Eval Rsrch	54	124,808,046	119	71,830,401
CTISL Cyber Technology & Information Security Lab	16	6,745,144	31	20,823,307
DDO Deputy Directors Office	4	1,017,005	9	1,386,891
ESLYS Electronic Systems Laboratory	69	137,783,522	114	80,229,598
EOSL Electro-Optical Systems Laboratory	59	69,662,127	69	27,484,207
ICL Information & Communications Laboratory	85	53,133,677	77	26,800,925
ICSD Information & Cyber Sciences Directorate	1	-	15	20,861,609
ISD Information Systems Department	1	775,000	2	452,500
SEAL Sensors and Electromagnetic Applications Lab	84	109,954,958	175	52,364,760
VPDIR Vice President & GTRI Director	-	-	3	429,916
Total	569	\$822,260,761	804	\$377,046,684
Institute Total	3,630	\$2,334,689,243	3,707	\$690,449,496

Source: Office of Sponsored Programs

Research Grants and Contracts by Awarding Agency

Fiscal Year 2017
\$690.4 Million

U.S. Department of Defense (includes Army, Navy & Air Force)	51%
National Science Foundation	9%
U.S. Department of Health & Human Services	6%
Other Federal Sponsors	7%
Industrial	14%
Colleges & Universities	6%
Miscellaneous/Other	7%
Total	100%



The Enterprise Innovation Institute (EI²)

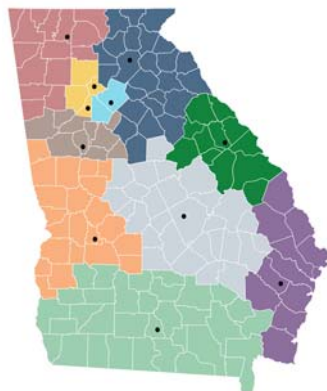


The **Enterprise Innovation Institute (EI²)** is the Georgia Institute of Technology’s economic development and business services organization. Georgia Tech was founded to support Georgia’s economic development and EI²’s focus — “*Create > Accelerate > Grow*” — is the continuance of that core mission. We achieve this through our extensive suite of programs and services and by leveraging Georgia Tech’s broad resources and that of our economic development partners. EI²’s programs support **commercialization** to help bring faculty and student innovations to the market, accelerate **entrepreneurship** and technology startup creation, and help the **growth** of existing businesses, manufacturers, communities in Georgia, and beyond.

EI²’s key programs include the **Georgia Manufacturing Extension Partnership (GaMEP)**, the **Advanced Technology Development Center (ATDC)**, **VentureLab**, and the **Economic Development Lab**. See innovate.gatech.edu for a complete listing of programs and services.

EI²’s economic impact in fiscal year 2017:

- 26,000 jobs created or saved across the state.
- \$1.6 billion in government contracts for assisted companies.
- \$259 million in new sales for assisted manufacturers.
- \$117 million in new contracts for minority-owned companies.
- \$96 million in investment for technology startups in the ATDC incubator.
- \$9.7 million in new sales for assisted companies affected by foreign trade.
- 25 startups formed based on Georgia Tech research.



EI² manages a network of 11 Georgia Tech Regional Offices around the state to facilitate delivery of economic development services and to provide a local connection to Georgia Tech. To learn more about EI² or to take advantage of these outreach opportunities please visit: innovate.gatech.edu.

Faculty by Gender as of Fall 2017

College	Department	Male	Female	Institute Total
College of Computing	Computational Science & Eng	11	2	13
	Computing, College of	10	3	13
	School of Computer Science	26	7	33
	School of Interactive Computng	23	11	34
	College of Computing Total	70	23	93
College of Design	College of Design	3	2	5
	School of Architecture	19	2	21
	School of Building Construction	3	3	6
	School of City & Regional Plan	6	2	8
	School of Industrial Design	7	1	8
	School of Music	7	1	8
	College of Design Total	45	11	56
College of Engineering	Aerospace Engineering	35	2	37
	Biomedical Engr, GT/Emory	29	8	37
	Chemical and Biomolecular Engr	28	10	38
	Civil & Environmental Engr	37	12	49
	Electrical & Computer Engr	92	15	107
	Engineering, College of	4	1	5
	Industrial & Systems Engr	45	11	56
	Materials Science & Engr	24	7	31
	Mechanical Engineering	87	12	99
	College of Engineering Total	381	78	459
College of Sciences	Sciences, College of	2	2	4
	Biological Sciences	42	11	53
	Chemistry & Biochemistry	28	7	35
	Earth & Atmospheric Sciences	16	9	25
	Mathematics	47	13	60
	Physics	35	5	40
	Psychology	18	4	22
	College of Sciences Total	188	51	239
Ivan Allen College	Economics	10	4	14
	IAC-History & Sociology	14	7	21
	International Affairs	14	8	22
	Ivan Allen College	1	1	2
	Literature,Media & Com	27	43	70
	Modern Languages	17	24	41
	Public Policy	18	9	27
	Ivan Allen College Total	101	96	197
Scheller College of Business	Inst Leadership & Entreprene	2	3	5
	Scheller College of Business	68	20	88
	Scheller College of Business Total	70	23	93
Other Academic Areas	GT Lorraine	1		1
	GTPE--Administration	2		2
	GTPE--Language Institute	5	16	21
	Honors Program		1	1
	Provost & Executive VP for AA	1		1
	Vice Provost/Grad Ed & Fac Dev		1	1
	VP for International Initiativ	1		1
	VP for Undergraduate Education	1		1
Other Academic Areas Total	11	18	29	
Institute Total		866	300	1,166



Faculty by Race/Ethnicity as of Fall 2017

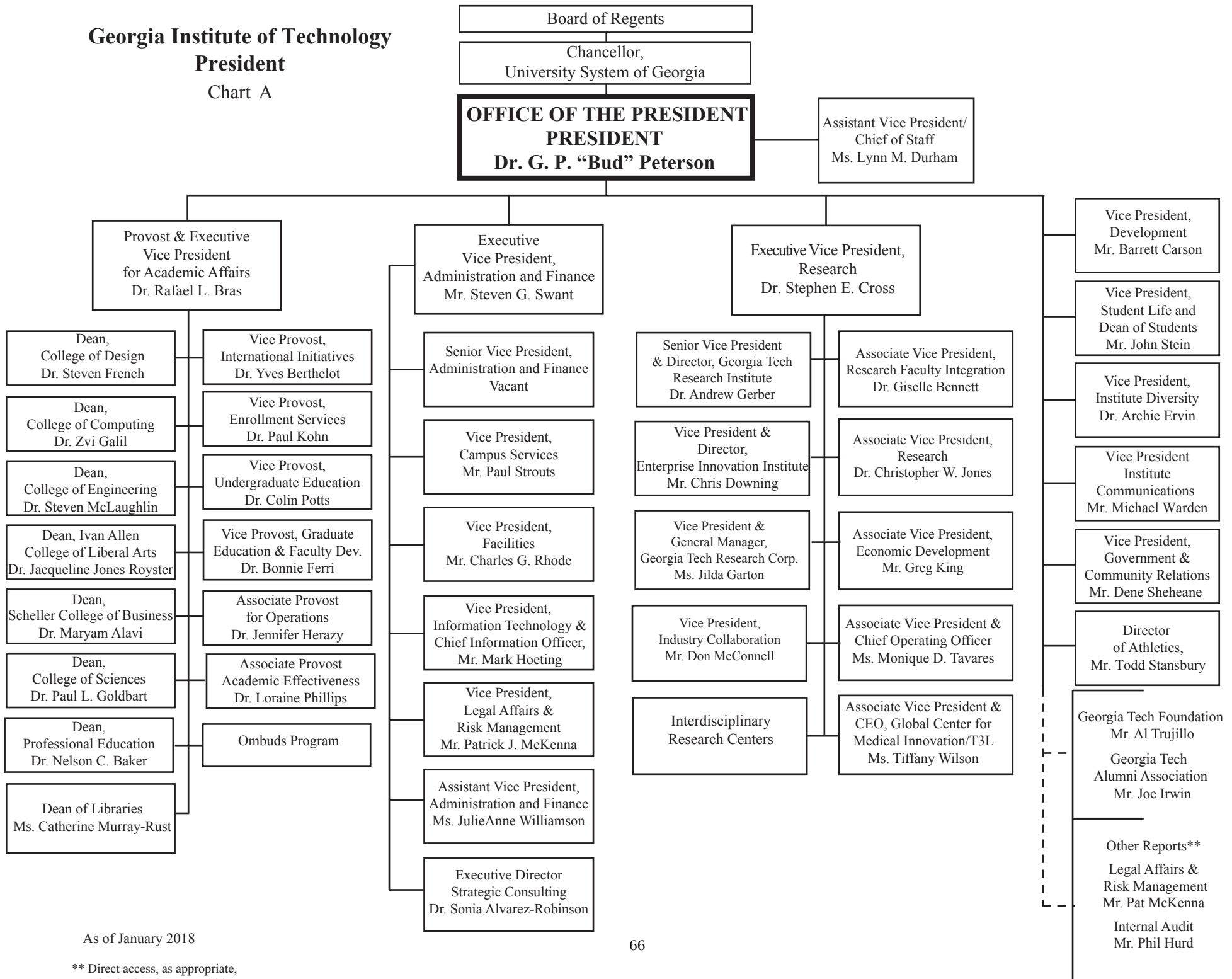
College	Department	Asian			Black/African American			Hispanic			White			Unknown			Institute Total
		Male	Female	Total	Male	Female	Total	Male	Female	Total	Male	Female	Total	Male	Female	Total	
College of Computing	Computational Science & Eng	8	1	9							3	1	4				13
	Computing, College of	1		1	4		4				5	3	8				13
	School of Computer Science	12	2	14				1		1	13	5	18				33
	School of Interactive Computng	3	3	6					1	1	20	7	27				34
	College of Computing Total	24	6	30	4		4	1	1	2	41	16	57				93
College of Design	College of Design	1		1		1	1				2	1	3				5
	School of Architecture	1	1	2						18	1	19					21
	School of Building Construction		2	2				2		2	1	1	2				6
	School of City & Regional Plan	1	1	2					1	1	5		5				8
	School of Industrial Design	2	1	3							5		5				8
	School of Music		1	1							7		7				8
	College of Design Total	5	6	11		1	1	2	1	3	38	3	41				56
College of Engineering	Aerospace Engineering	7		7	3		3	2		2	23	2	25				37
	Biomedical Engr, GT/Emory	12	1	13	2		2			15	7	22					37
	Chemical and Biomolecular Engr	6	5	11	1		1	2		2	19	5	24				38
	Civil & Environmental Engr	9	3	12		1	1	1		1	27	8	35				49
	Electrical & Computer Engr	21	5	26	2	1	3	5		5	64	9	73				107
	Engineering, College of										4	1	5				5
	Industrial & Systems Engr	19	4	23	1		1	2		2	22	7	29	1		1	56
	Materials Science & Engr	14	1	15					2	2	10	4	14				31
	Mechanical Engineering	29	2	31	6	1	7	1		1	49	9	58	2		2	99
	College of Engineering Total	117	21	138	15	3	18	13	2	15	233	52	285	3		3	459
	College of Sciences	Sciences, College of									2	2	4				
Biological Sciences		6	5	11	1		1	1		1	34	6	40				53
Chemistry & Biochemistry		4	1	5	2		2	3		3	19	5	24		1	1	35
Earth & Atmospheric Sciences		4	1	5							12	8	20				25
Mathematics		9	6	15	1		1	1		1	36	7	43				60
Physics		4		4				2		2	27	5	32	2		2	40
Psychology									1	1	18	3	21				22
College of Sciences Total		27	13	40	4		4	7	1	8	148	36	184	2	1	3	239
Ivan Allen College	Economics	2	2	4	1		1	1		1	6	2	8				14
	IAC-History & Sociology	1		1	1	1	2			1	11	5	16	1		1	21
	International Affairs	2	2	4	1		1				11	6	17				22
	Ivan Allen College					1	1				1		1				2
	Literature,Media & Com		3	3		3	3			27	36	63		1	1		70
	Modern Languages	5	9	14	1		1	3	2	5	8	13	21				41
	Public Policy					3	3	2		2	16	6	22				27
	Ivan Allen College Total	10	16	26	4	8	12	6	3	9	80	68	148	1	1	2	197
Scheller College of Business	Inst Leadership & Entrepene									2	3	5					5
	Scheller College of Business	30	4	34		2	2	1		37	14	51					88
	Scheller College of Business Total	30	4	34		2	2	1		39	17	56					93
Other Academic Areas	GT Lorraine									1		1					1
	GTPE-Administration									2		2					2
	GTPE-Language Institute		2	2					1	1	4	12	16	1	1	2	21
	Honors Program										1	1	1				1
	Provost & Executive VP for AA							1		1							1
	Vice Provost/Grad Ed & Fac Dev										1	1	1				1
	VP for International Initiativ										1		1				1
	VP for Undergraduate Education										1		1				1
	Other Academic Areas Total		2	2				1	1	2	9	14	23	1	1	2	29
	Institute Total																
		213	68	281	27	14	41	31	9	40	588	206	794	7	3	10	1,166

Faculty by Tenure/Tenure-Track as of Fall 2017

College	Department	Regents Professor			Professor			Associate Professor			Assistant Professor			Institute		
		Male	Female	Total	Male	Female	Total	Male	Female	Total	Male	Female	Total	Total		
College of Computing	Computational Science & Eng	1		1	4	1	5	4		4	2	1	3	13		
	Computing, College of				3		3							3		
	School of Computer Science	1		1	18	3	21	2	4	6	5		5	33		
	School of Interactive Computng	2		2	11	4	15	4	2	6	4	5	9	32		
	College of Computing Total	4		4	36	8	44	10	6	16	11	6	17	81		
College of Design	College of Design				3	2	5							5		
	School of Architecture				8	1	9	9	1	10	2		2	21		
	School of Building Construction				1		1	2		2		3	3	6		
	School of City & Regional Plan				2		2	3	1	4	1	1	2	8		
	School of Industrial Design				4		4		1	1	1	1	1	6		
	School of Music				3		3	1		1	1	1	2	6		
	College of Design Total				21	3	24	15	3	18	5	5	10	52		
College of Engineering	Aerospace Engineering	3		3	22	1	23	3	1	4	6		6	36		
	Biomedical Engr, GT/Emory	3		3	9	2	11	7	3	10	6	2	8	32		
	Chemical and Biomolecular Engr	2		2	12	4	16	8	3	11	4	3	7	36		
	Civil & Environmental Engr	1		1	19	7	26	13	3	16	3	2	5	48		
	Electrical & Computer Engr	3		3	61	7	68	17	6	23	10	1	11	105		
	Engineering, College of				4	1	5							5		
	Industrial & Systems Engr				25	6	31	12	2	14	7	2	9	54		
	Materials Science & Engr	3		3	16	2	18	3	4	7	2	1	3	31		
	Mechanical Engineering	4		4	41	1	42	23	6	29	17	5	22	97		
	College of Engineering Total	19		19	209	31	240	86	28	114	55	16	71	444		
College of Sciences	Sciences, College of				2	2	4							4		
	Biological Sciences	1		1	18	3	21	11	3	14	7	4	11	47		
	Chemistry & Biochemistry	3		3	13	1	14	5	3	8	6	3	9	34		
	Earth & Atmospheric Sciences				9	4	13	5	1	6	2	3	5	24		
	Mathematics	2		2	27	4	31	11	1	12	5	8	13	58		
	Physics	3		3	12	2	14	13	2	15	7	1	8	40		
	Psychology				8	3	11	7	1	8	2	2	2	21		
	College of Sciences Total	9		9	89	19	108	52	11	63	29	19	48	228		
Ivan Allen College	Economics				3	1	4	4	3	7	3		3	14		
	IAC-History & Sociology				8	2	10	1	4	5	5	1	6	21		
	International Affairs				8	2	10	3	1	4	2	5	7	21		
	Ivan Allen College					1	1	1	1	1			1	2		
	Literature,Media & Com				7	7	14	7	6	13	2	3	5	32		
	Modern Languages					4	4	9	8	17	2		2	23		
	Public Policy				3	5	8	11	4	15	4		4	27		
	Ivan Allen College Total				29	22	51	36	26	62	18	9	27	140		
Scheller College of Business	Inst Leadership & Entreprene					1	1							1		
	Scheller College of Business		1	1	21	3	24	21	2	23	13	8	21	69		
	Scheller College of Business Total		1	1	21	4	25	21	2	23	13	8	21	70		
Other Academic Areas	GTPE--Administration							2		2				2		
	Honors Program								1	1				1		
	Provost & Executive VP for AA				1		1							1		
	Vice Provost/Grad Ed & Fac Dev					1	1							1		
	VP for International Initiativ				1		1							1		
	VP for Undergraduate Education				1		1							1		
	Other Academic Areas Total				3	1	4	2	1	3				7		
Institute Total				32	1	33	408	88	496	222	77	299	131	63	194	1,022

Georgia Institute of Technology President

Chart A



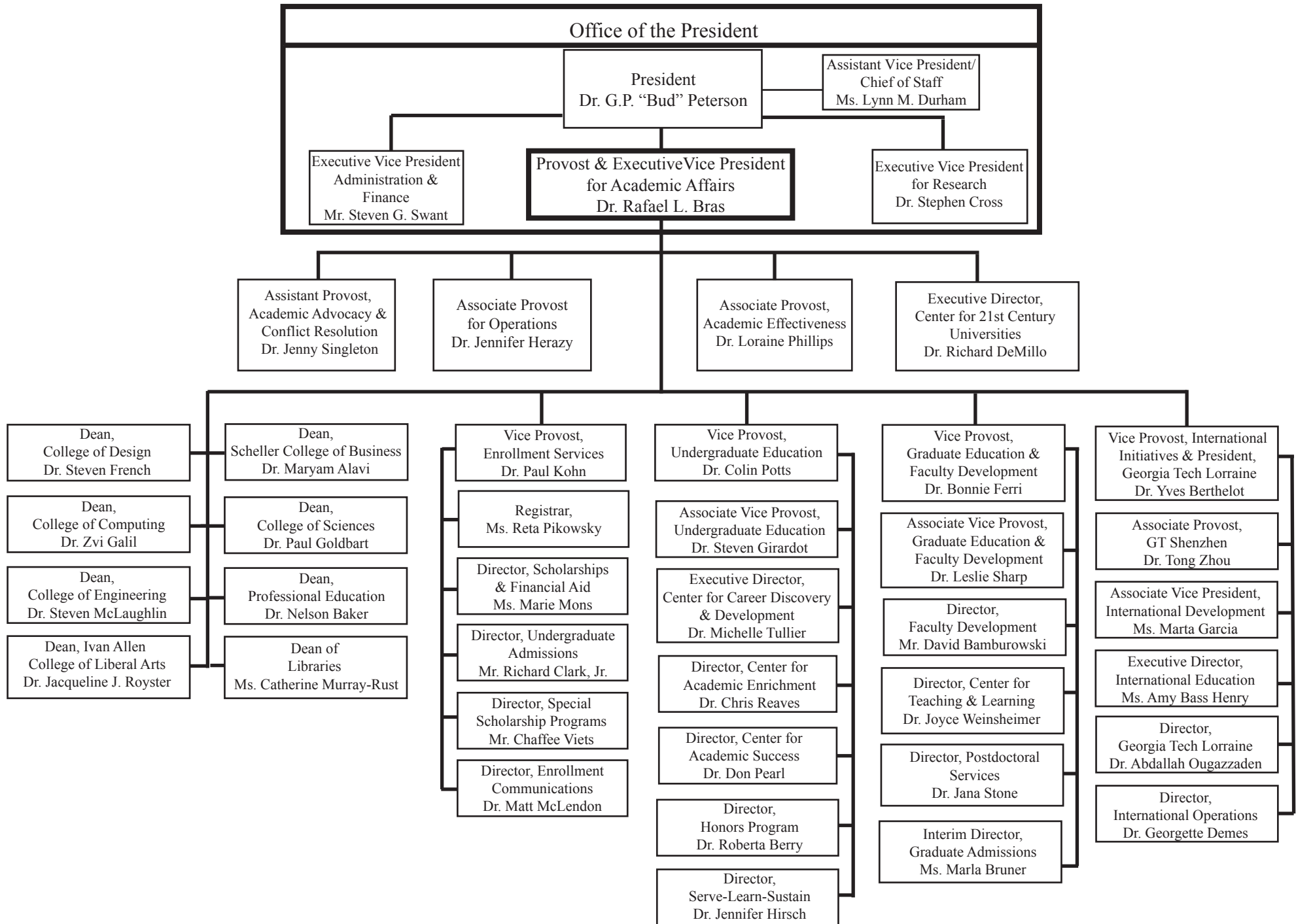
As of January 2018

** Direct access, as appropriate,
and institutional accountability

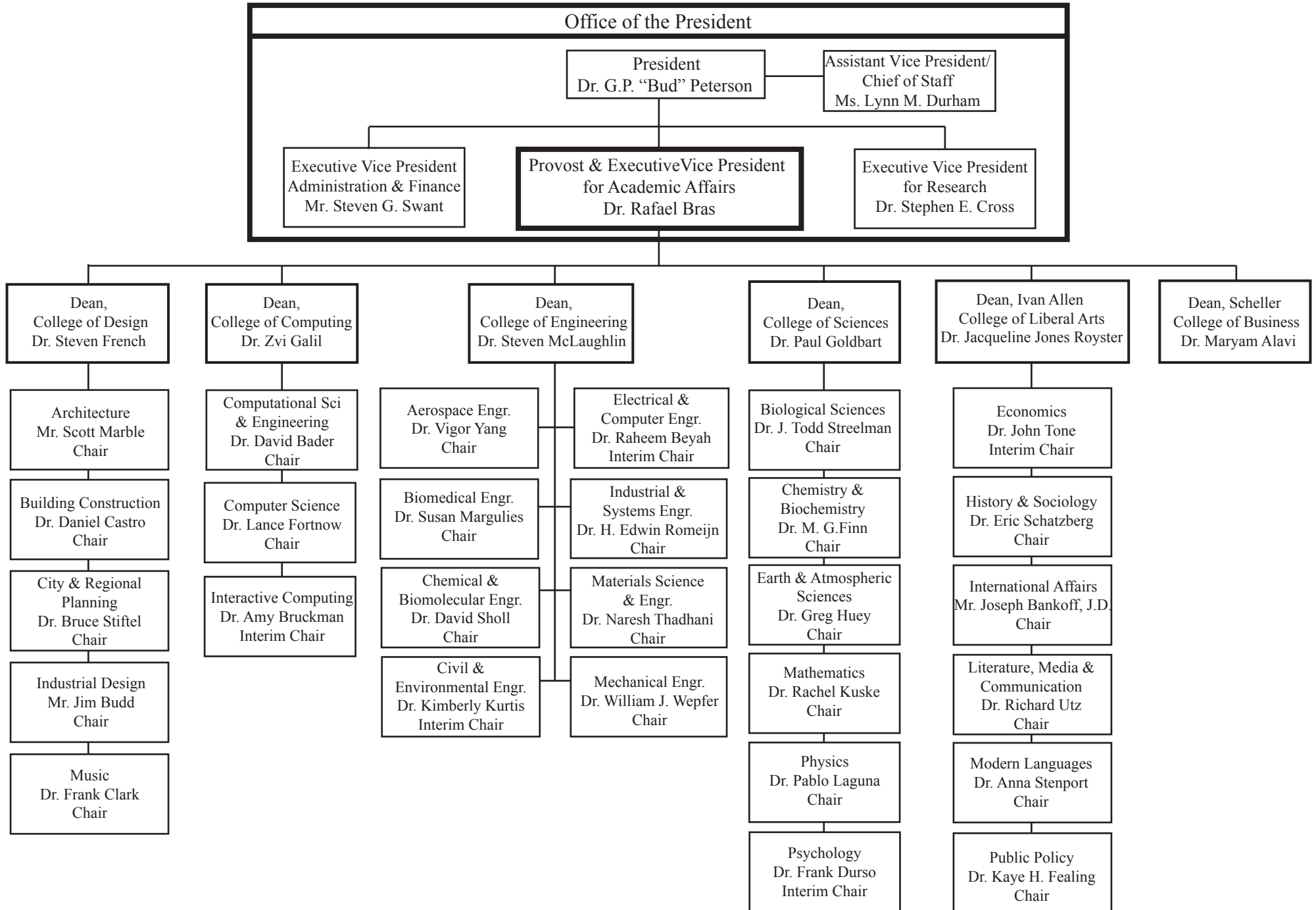
Chart B

Georgia Institute of Technology

Provost and Executive Vice President for Academic Affairs



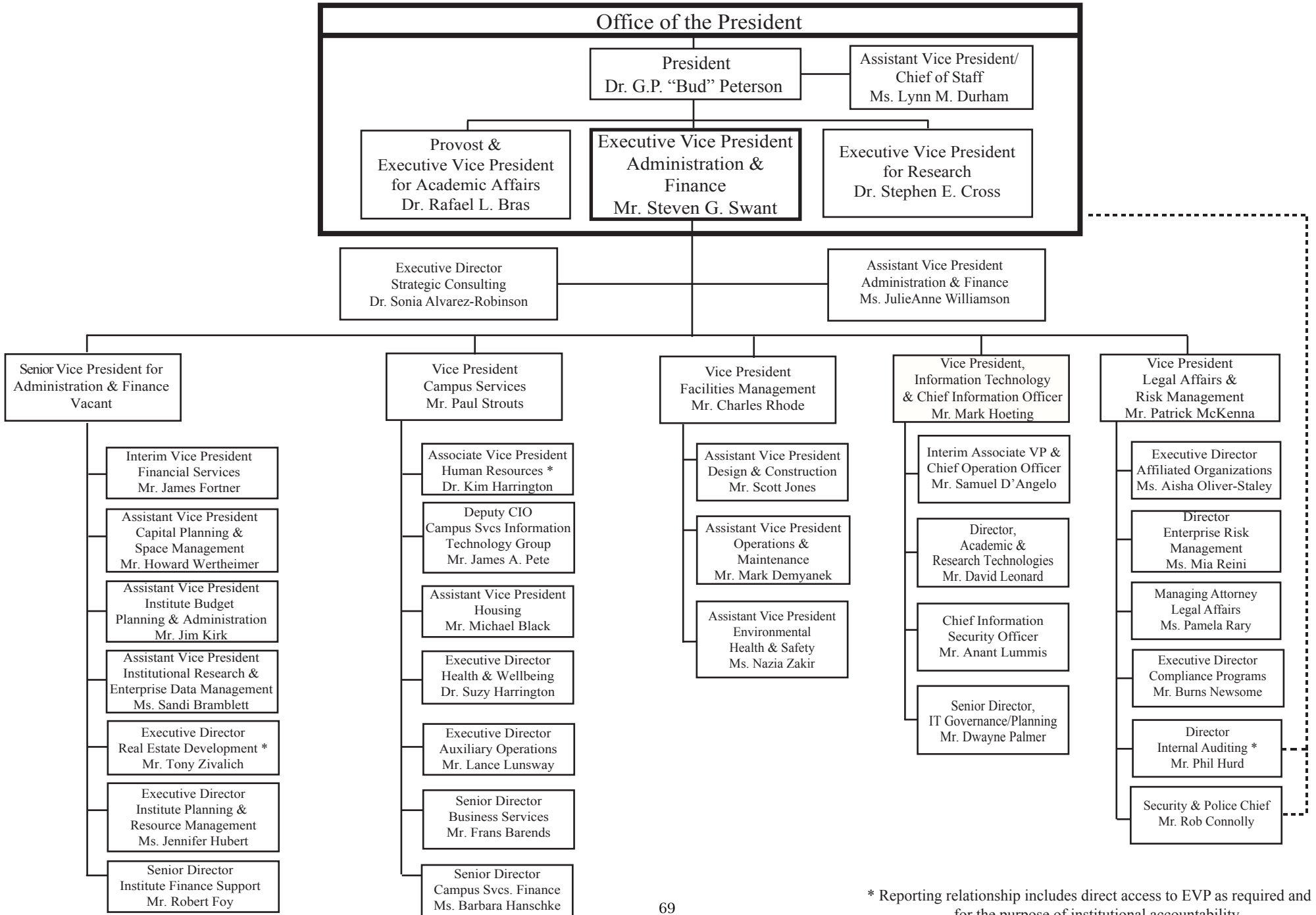
Georgia Institute of Technology Provost and Executive Vice President for Academic Affairs Degree Granting Schools and Departments



Georgia Institute of Technology

Executive Vice President for Administration and Finance

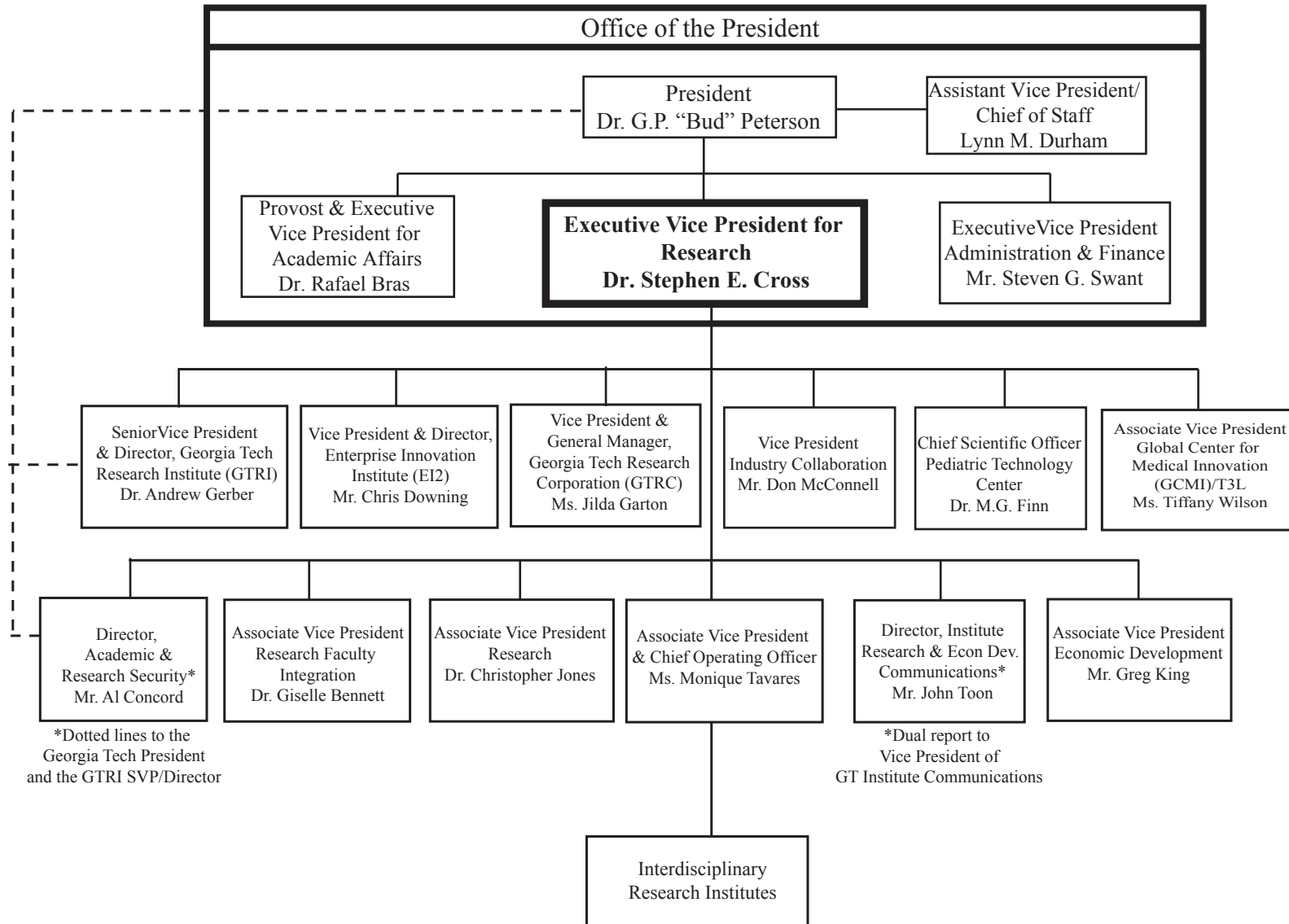
Chart D



* Reporting relationship includes direct access to EVP as required and for the purpose of institutional accountability.

Chart E

Georgia Institute of Technology Executive Vice President for Research

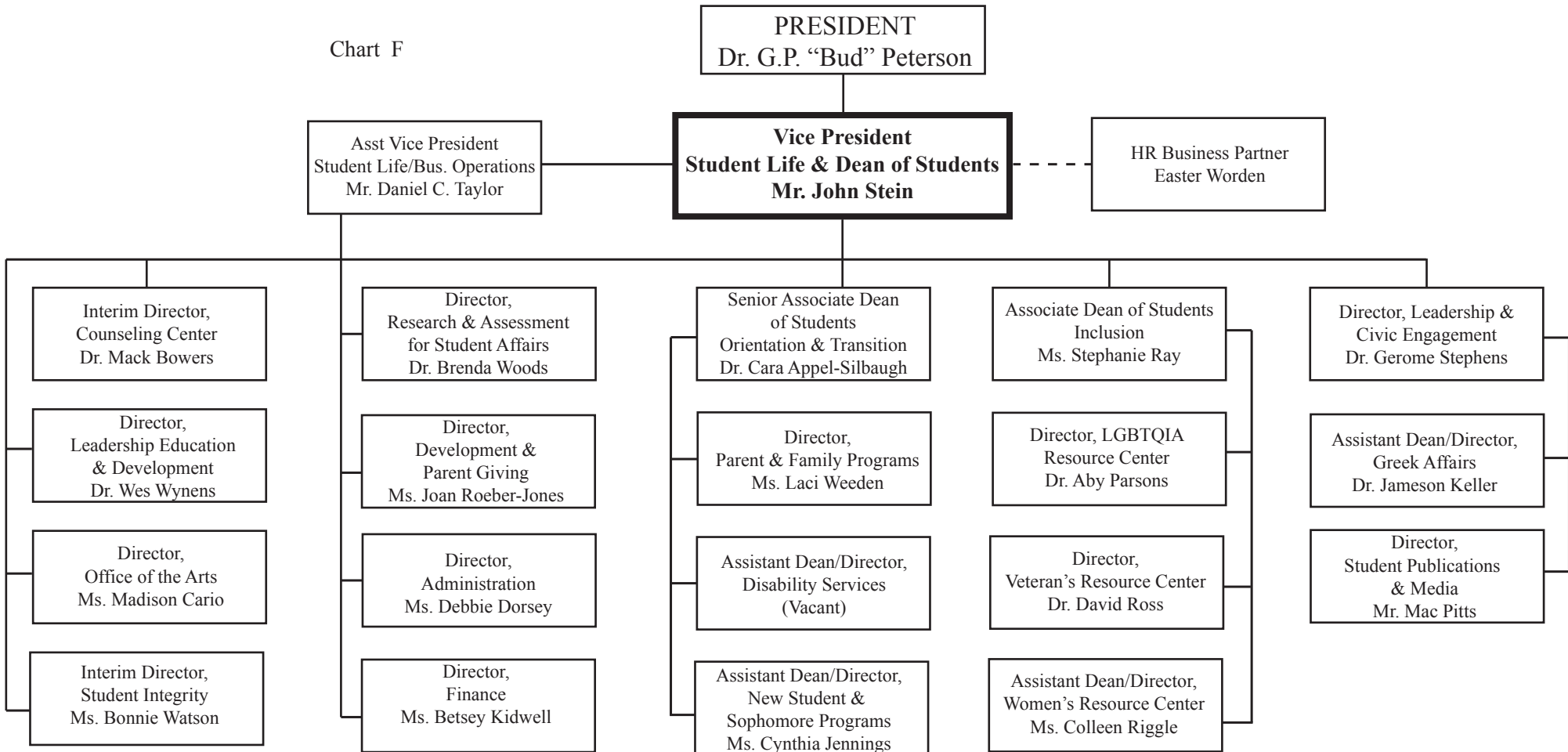


*Dotted lines to the Georgia Tech President and the GTRI SVP/Director

*Dual report to Vice President of GT Institute Communications

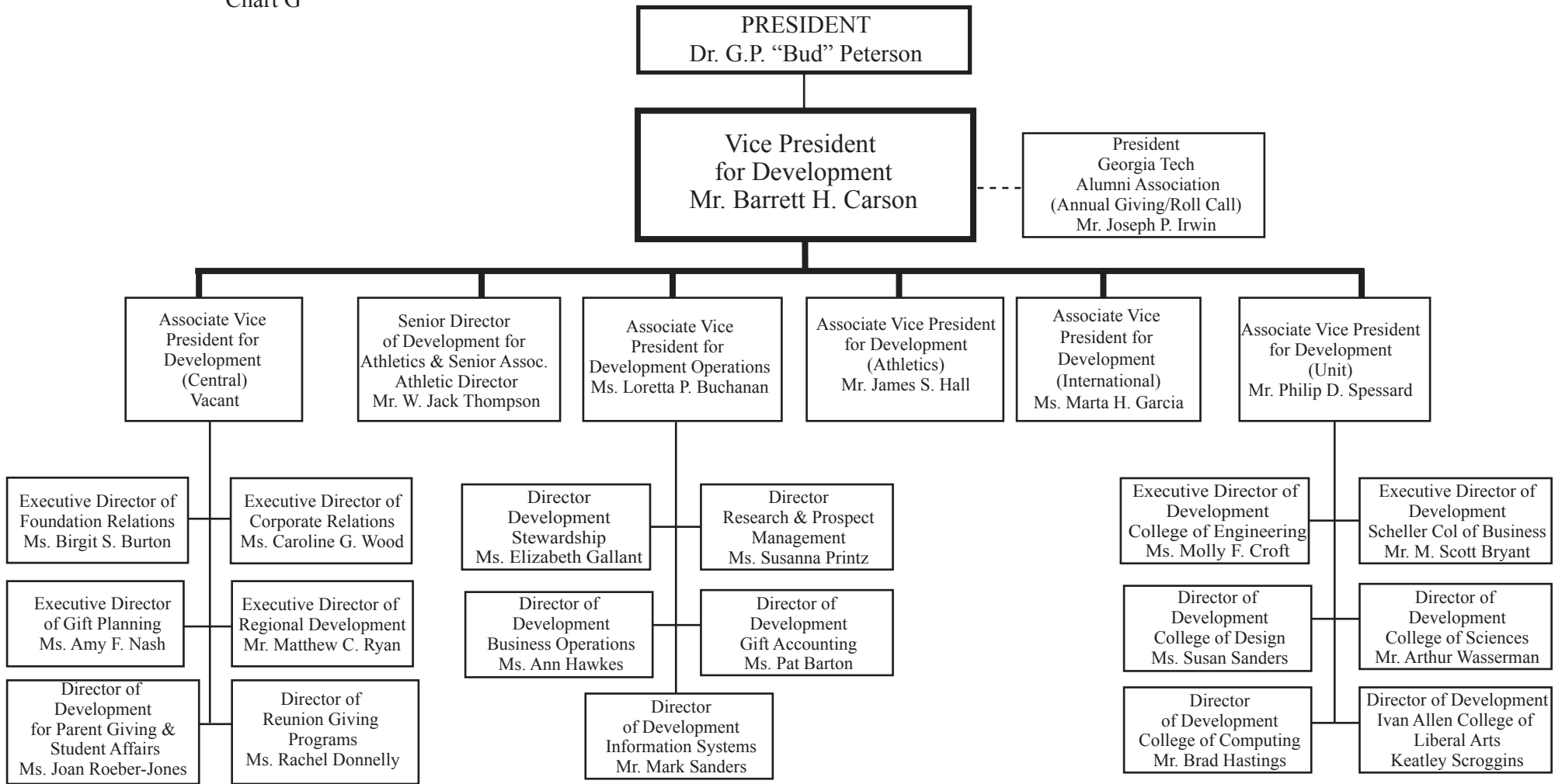
Georgia Institute of Technology Student Life

Chart F



Georgia Institute of Technology Development

Chart G



Georgia Institute of Technology Institute Communications

Chart H

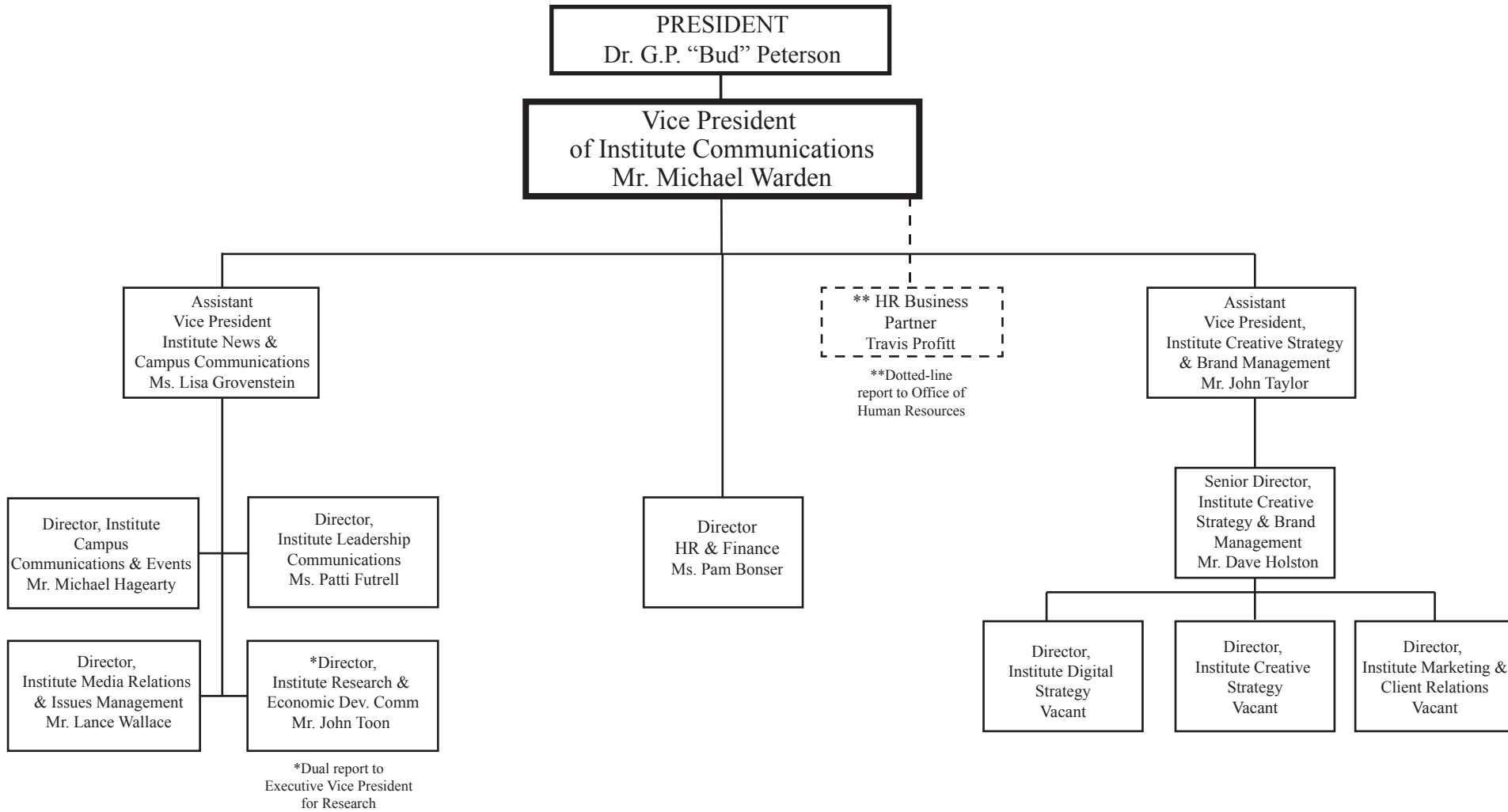
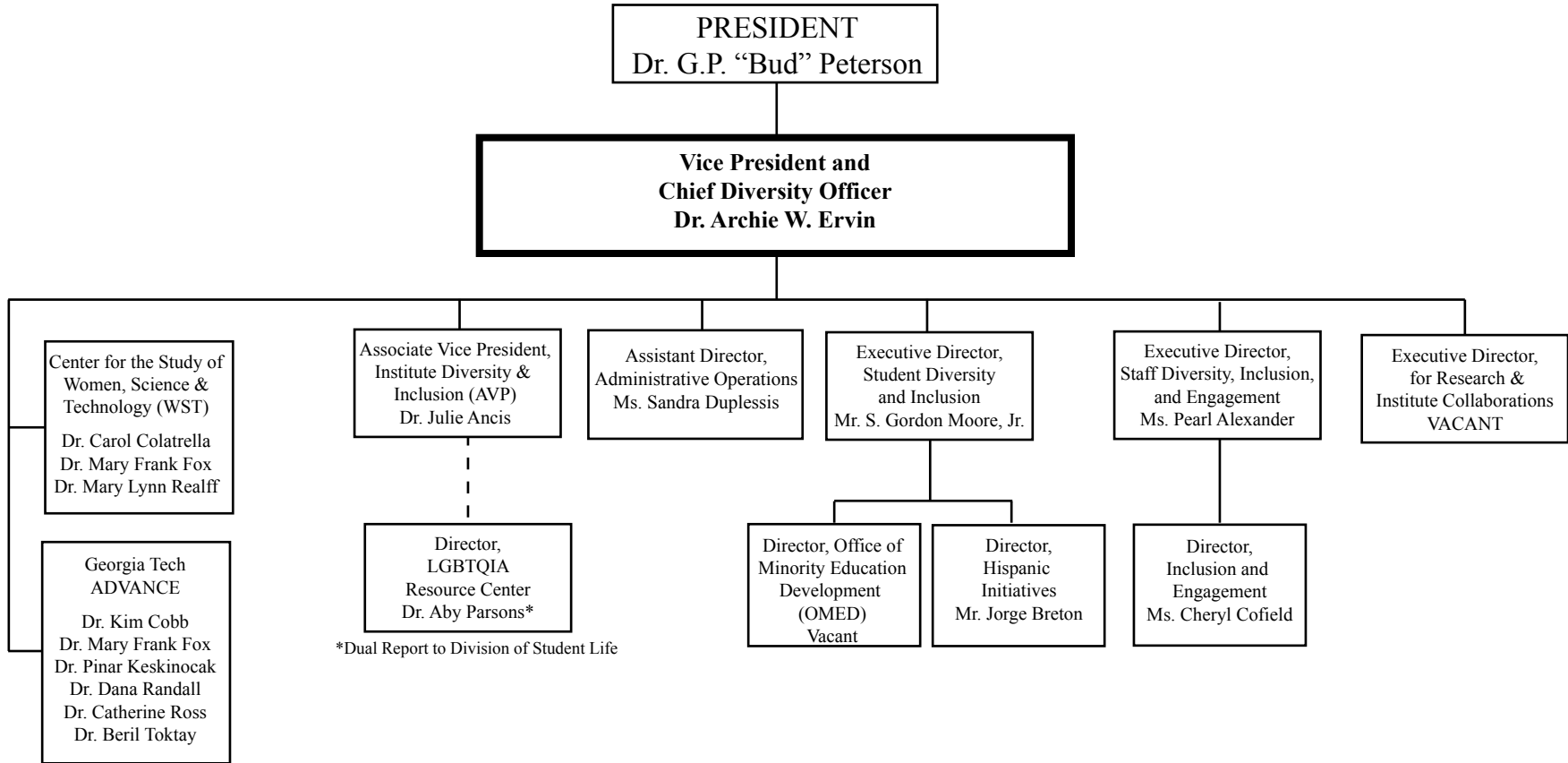


Chart I

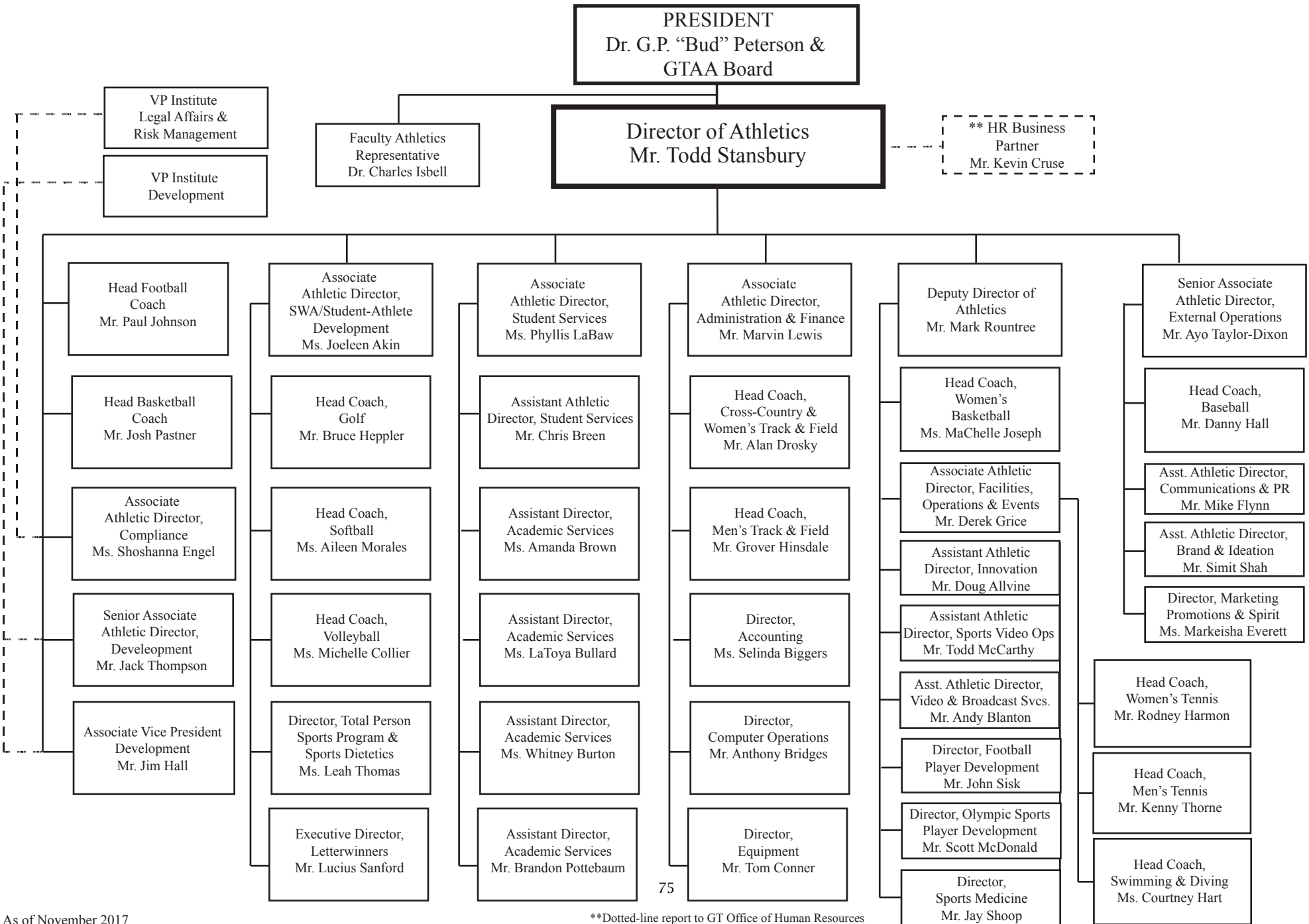
Georgia Institute of Technology Institute Diversity



As of December 2017

Georgia Institute of Technology Georgia Tech Athletic Association

Chart J



**Dotted-line report to GT Office of Human Resources

CREATING THE NEXT[®]



Office of Institutional Research and Planning
Georgia Institute of Technology
Atlanta, Georgia 30332-0530
(404) 894-3311
www.irp.gatech.edu



Recyclable

This publication is printed on paper that is produced with recycled material. Georgia Tech is committed to environmental sustainability. Please recycle this publication.

Copyright 2017 • Georgia Institute of Technology