



**Georgia** Institute  
of **Technology**

**Annual First-Time Freshman  
Retention Study**

**Office of Institutional Research and Planning**

**Fall 2012**

**Georgia Institute of Technology**  
**Institutional Research and Planning**  
**Annual First-Time Freshman Retention Study**

Institutional Research and Planning has studied the retention of Georgia Tech students from 1993 through 2012. Cohorts have been defined as first-time students who entered in the respective summer or fall terms and were full-time in the cohort-year fall term. Retention is defined as being enrolled as of (taking classes or participating in co-op/internship programs) or having graduated by each successive fall term. This report tracks retention through year seven and graduation through year six for each cohort in total, by gender, by ethnicity, and by college of entry (see Tables 5-10). Chi-Square tests of significance ( $p \leq 0.05$ ) on each cohort's progression were conducted by these characteristics. Second-year retention was examined by an expanded set of characteristics for the 2007 through 2011 cohorts (see Table 2 and Table 3).

### **Retention Highlights**

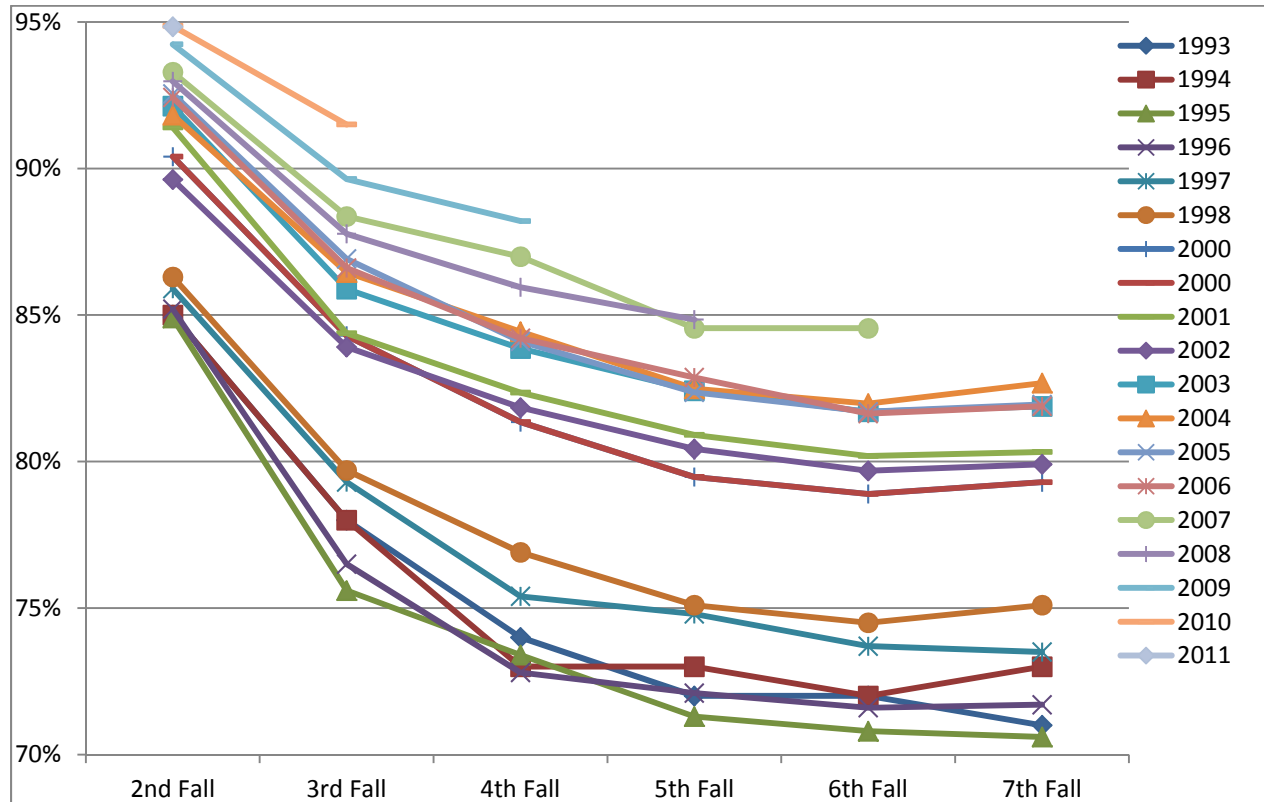
The notable second-year retention rate of 95% continued for the 2011 cohort. Historic third-year (92%), fourth-year (88%), and sixth-year (85%) retention rates were observed for the 2010, 2009, and 2007 cohorts, respectively. Fifth-year (85%) and seventh-year (82%) retention rates were maintained at high rates for the 2008 and 2006 cohorts, respectively (see Table 1).

- Significant differences in second-year retention were noted for the following characteristics: ethnicity, state residency, citizenship, Greek, and academic standing for the 2011 cohort.
  - Academic standing was the characteristics most frequently observed to have significant second-year retention differences among the five most recent cohorts. Additionally, state residency and GT1000 enrollment were also observed to have significant second-year retention differences.
  - Students in good academic standing as of the end of their freshman year were retained to the second year at higher rates than those on warning or academic probation.
  - The characteristic least observed to have significant second-year retention differences were college of entry (see Table 2).
  
- Significant differences in second-year retention were also noted for the following characteristics: SAT Math, High School GPA, Admissions Index and First-Year GPA for the 2011 cohort.
  - High School GPA, Admissions Index and First-Year GPA were the characteristics most frequently observed to have significant second-year retention differences among the five most recent cohorts.
  - The characteristics least observed to have significant second-year retention differences were SAT Math and SAT Verbal (see Table 3).
  
- Retention beyond the second year was examined by gender, ethnicity, and college of entry.
  - Significant differences were most frequently observed by gender. Females were consistently retained at higher levels for all cohorts. These differences were most frequently observed in retention years three through seven (see Table 5).
  - Some significant differences by ethnicity were observed. Significant differences were observed most frequently in the fifth, sixth and seventh years of retention, and least frequently in the third and fourth years of retention (see Table 6).
  - Few significant differences were observed by college of entry (see Table 7).

Table 1. Retention Rates Overall

Freshman Cohort		Retention Rates (to next Fall term)					
Year	n	2nd Yr	3rd Yr	4th Yr	5th Yr	6th Yr	7th Yr
1993	1955	85%	78%	74%	72%	72%	71%
1994	2012	85%	78%	73%	73%	72%	73%
1995	2120	85%	76%	73%	71%	71%	71%
1996	2120	85%	77%	73%	72%	72%	72%
1997	2069	86%	79%	75%	75%	74%	74%
1998	2487	86%	80%	77%	75%	75%	75%
1999	2298	90%	83%	81%	80%	79%	79%
2000	2243	90%	84%	81%	79%	79%	79%
2001	2225	91%	84%	82%	81%	80%	80%
2002	2277	90%	84%	82%	80%	80%	80%
2003	2225	92%	86%	84%	82%	82%	82%
2004	2575	92%	86%	84%	82%	82%	83%
2005	2419	93%	87%	84%	82%	82%	82%
2006	2838	92%	87%	84%	83%	82%	82%
2007	2624	93%	88%	87%	85%	85%	
2008	2633	93%	88%	86%	85%		
2009	2655	94%	90%	88%			
2010	2706	95%	92%				
2011	2692	95%					

Chart 1. Freshman Cohort Retention to the Seventh Fall



**Table 2. Chi-Square Results for Retention to the Second Year**

<b>First fall term</b>	<b>2007 Cohort</b>	<b>2008 Cohort</b>	<b>2009 Cohort</b>	<b>2010 Cohort</b>	<b>2011 Cohort</b>
<b>Cohort</b>	93.2%	93.0%	94.2%	94.9%	94.8%
<b>Female</b>	94.4%	*94.9%	94.9%	95.9%	95.2%
<b>Male</b>	92.6%	92.1%	93.8%	94.3%	94.6%
<b>Asian</b>	94.5%	95.3%	*96.6%	95.7%	*97.3%
<b>Black or African American</b>	94.0%	91.4%	94.9%	92.4%	93.4%
<b>Hispanic or Latino</b>	91.7%	90.6%	93.6%	95.2%	95.6%
<b>International</b>	93.1%	92.6%	88.6%	91.4%	91.6%
<b>Other<sup>1</sup></b>	93.6%	87.7%	92.9%	92.7%	92.7%
<b>White</b>	92.9%	92.9%	94.6%	95.4%	94.9%
<b>International</b>	93.1%	92.6%	*88.6%	*91.4%	*91.6%
<b>Underrepresented Minority<sup>2</sup></b>	93.1%	90.4%	94.1%	93.9%	94.2%
<b>Not Underrepresented Minority</b>	93.2%	93.4%	95.0%	95.4%	95.3%
<b>In-State</b>	*94.5%	*94.3%	*95.8%	95.5%	*95.9%
<b>Out-of-State</b>	91.1%	90.6%	91.8%	93.8%	93.1%
<b>International</b>	93.1%	92.6%	*88.6%	*91.4%	*91.6%
<b>U.S. Resident</b>	93.2%	93.0%	94.9%	95.2%	95.2%
<b>Fraternity/Sorority</b>	93.9%	*95.6%	95.6%	96.1%	*97.2%
<b>Non-Member</b>	93.0%	92.1%	93.8%	94.6%	94.0%
<b>On Campus Housing</b>	93.2%	93.1%	94.3%	*95.0%	94.9%
<b>Off Campus</b>	94.2%	90.4%	91.2%	90.2%	93.1%
<b>Enrolled in GT1000</b>	*94.8%	*94.2%	*95.0%	*95.9%	95.2%
<b>Not Enrolled in GT1000</b>	91.2%	90.8%	92.5%	92.8%	94.3%
<b>Freshman Experience</b>	*93.8%	93.0%	94.5%	95.1%	94.9%
<b>Non-Freshman Experience</b>	91.0%	93.0%	93.1%	94.3%	94.5%
<b>GT1000 &amp; FE</b>	*95.2%	*94.0%	*95.3%	*96.6%	95.3%
<b>GT1000 or FE or Neither</b>	91.5%	91.7%	93.0%	93.3%	94.2%
<b>Pell</b>	*95.6%	94.2%	93.3%	93.5%	94.8%
<b>No Pell</b>	92.6%	92.7%	94.4%	95.2%	94.8%
<b>Architecture</b>	89.6%	93.0%	92.6%	95.6%	93.5%
<b>Computing</b>	93.9%	93.6%	94.5%	94.8%	94.8%
<b>Engineering</b>	93.2%	93.2%	94.4%	95.1%	95.0%
<b>Ivan Allen</b>	92.9%	93.5%	91.7%	96.0%	94.5%
<b>Scheller</b>	97.5%	92.9%	96.4%	93.8%	97.1%
<b>Sciences</b>	91.3%	90.6%	93.7%	93.4%	93.0%
<b>Good Standing</b>	*95.8%	*95.4%	*95.8%	*96.7%	*96.5%
<b>Warning</b>	72.6%	75.2%	82.1%	74.0%	71.9%
<b>Probation</b>	32.7%	27.3%	39.1%	26.5%	36.4%

\* Significant difference ( $p \leq 0.05$ )

<sup>1</sup> Other includes: American Indian or Alaskan Native, Native Hawaiian or Other Pacific Islander, Unknown and Two or More Races.

<sup>2</sup> Underrepresented Minority includes American Indian or Alaskan Native, Black or African American, Hispanic or Latino, Native Hawaiian or Other Pacific Islander and Two or More Races.

Table 3. t-test Results for Retention to the Second Year

Category	Retention Status	2007 Cohort	2008 Cohort	2009 Cohort	2010 Cohort	2011 Cohort
SAT Math	Retained	694	700	704	*705	*712
	Not Retained	694	691	698	679	700
SAT Verbal	Retained	651	653	*652	*664	672
	Not Retained	645	656	639	639	676
SAT Writing	Retained	629	*634	*633	*645	654
	Not Retained	619	619	616	610	655
High School GPA	Retained	*3.74	*3.76	*3.82	*3.87	*3.89
	Not Retained	3.65	3.64	3.7	3.75	3.83
Admissions Index	Retained	*2.87	*2.95	*3.01	*3.07	*3.12
	Not Retained	2.8	2.82	2.88	2.88	3.06
First-Year GPA	Retained	*3.09	*3.08	*3.14	*3.17	*3.22
	Not Retained	2.04	2.01	2.27	2.12	2.35

\* Significant difference ( $p \leq 0.05$ )

### Graduation Highlights

Four-year graduation rates declined from a historic high of 41% for the 2007 cohort to 37% for the 2008 cohort; however five-year graduation rates rose to a historic level of 76% for the 2007 cohort; and six-year rates were maintained just under the historic high of 80% at 79% for the 2005 cohort (see Table 4).

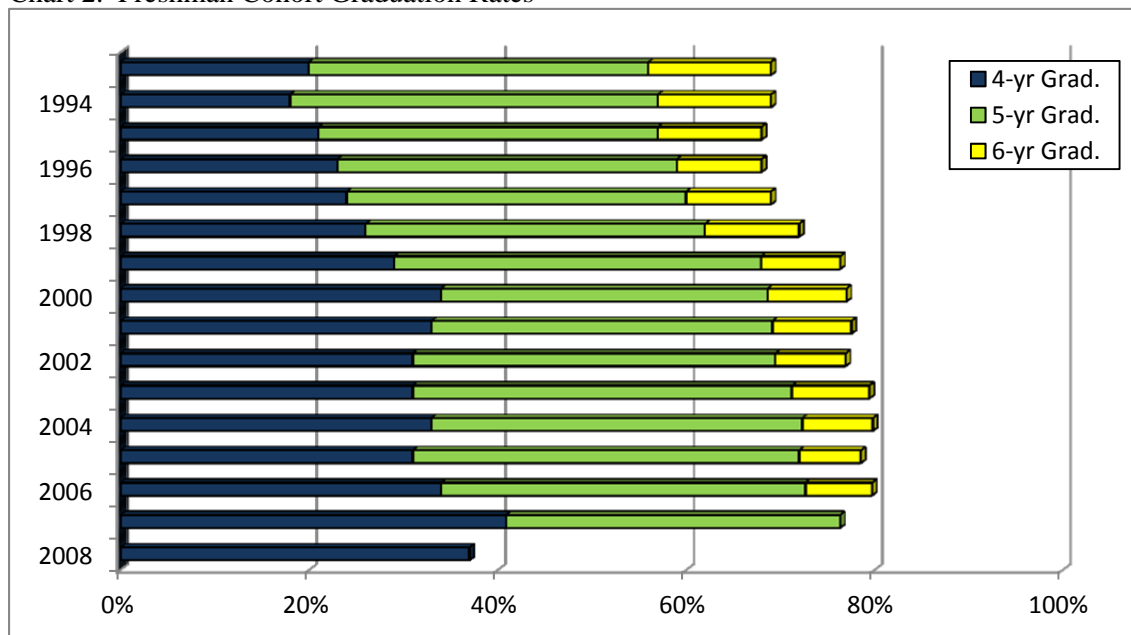
- Significant differences in four-year graduation rates were observed for all cohorts in this study for all three characteristics examined: gender, ethnicity, and college of entry (see Tables 9-11).
  - Females consistently graduated at significantly higher rates than males.
  - Asian students consistently graduated at higher rates (when the small numbers of American Indian, Native Hawaiian, Two or More races, and Unknown Race/Ethnicity students were excluded), while Black/African-American students consistently graduated at lower rates. However, historic high four-year graduation rates were observed for Black/African-American members of the 2008 cohort (34.4%).
  - International students consistently graduate at a higher rate than all other ethnicity categories.
  - Students entering the Ivan Allen College most frequently graduated at higher rates, while entrants to the College of Engineering most frequently graduated at lower rates.
  
- Similarly, significant differences in five-year graduation rates were observed for all cohorts examined in this report by gender and ethnicity.
  - Significant differences were most consistently observed by gender and ethnicity.
  - Females graduated at significantly higher five-year rates for all cohorts.
  - International students most frequently graduated at higher five-year rates, except for the 2005 and 2007 cohorts where Asian students graduated at the highest rates. Black/African-American students consistently graduated at lower five-year rates.
  - Many of the cohorts examined exhibited significant differences in five-year graduation rates by college of entry. Entrants in the College of Computing consistently graduated in five years at lower rates, while students in the College of Architecture most frequently graduated in five years at higher rates for the earliest cohorts; higher rates in the College of Management and the Ivan Allen College were observed for more recent cohorts.
  
- Significant differences were observed less frequently by college of entry for six-year graduation rates as compared to four- and five-year graduation rates.
  - Females graduated at significantly higher six-year rates for all cohorts studied.

- Six-year graduation rates were significantly different by ethnicity for all cohorts reported and were consistent with the patterns observed for four- and five-year graduation rates (see Table 9).
- College of entry was significant for only one (2004) out of the seven cohorts examined (see Table 10).
- The most recent five- (67.7%), and six-year (75.9%) graduation rates for Hispanic students were the lowest observed for this group in recent years. Although the six-year rates are on par with Institute averages, they represent a decline for the group.

Table 4. Graduation Rates Overall

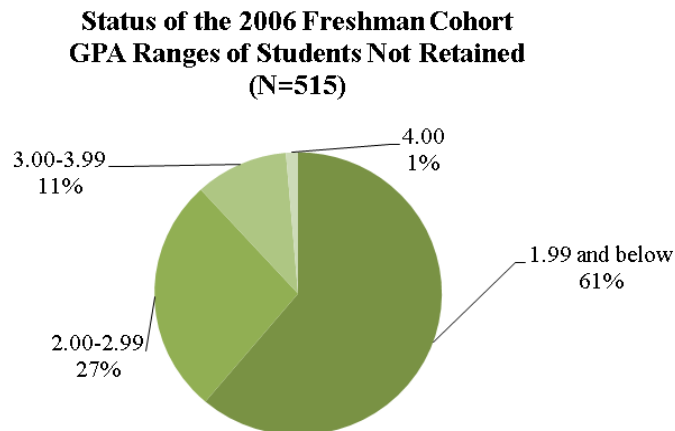
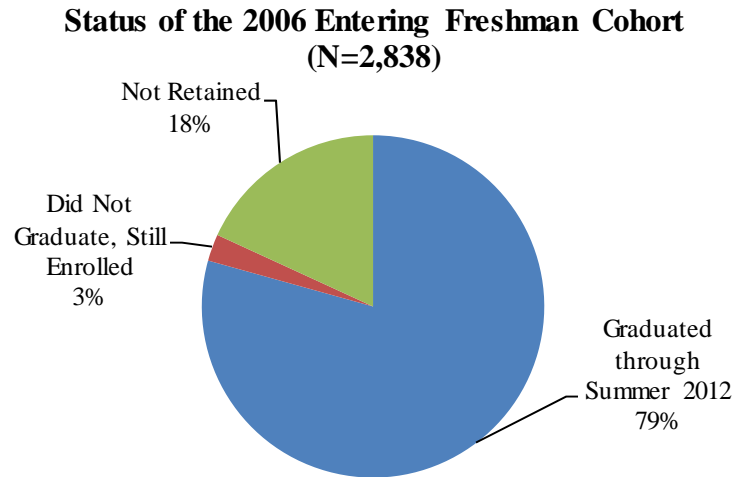
Freshman Cohort		Graduation Rates (through Summer term)		
Year	n	4 Yrs	5 Yrs	6 Yrs
1993	1955	20%	56%	69%
1994	2012	18%	57%	69%
1995	2120	21%	57%	68%
1996	2120	23%	59%	68%
1997	2069	24%	60%	69%
1998	2087	26%	62%	72%
1999	2298	29%	68%	76%
2000	2243	34%	69%	77%
2001	2225	33%	69%	78%
2002	2277	31%	70%	77%
2003	2225	31%	71%	79%
2004	2575	33%	72%	80%
2005	2419	31%	72%	79%
2006	2838	34%	72%	79%
2007	2624	41%	76%	
2008	2633	37%		

Chart 2. Freshman Cohort Graduation Rates



## Non-Retained Freshmen

In Fall 2006, one of Georgia Tech's largest freshman cohorts enrolled for classes with 2,838 students beginning their pursuit of a bachelor's degree. Of the 2,838 students in this cohort, 79% graduated within six years by the end of Summer 2012; 3% did not graduate but were still enrolled during Fall 2012; and 18% (515) left Georgia Tech. It should be noted that of the 515 students who left Georgia Tech without their bachelor's degree, 61% had a cumulative GPA of 1.99 or less while 39% had a cumulative GPA of 2.00 or greater.



The group of 200 non-retained students with a cumulative GPA of 2.00 and above represents a tremendous opportunity for Georgia Tech to improve our retention and graduation rates as we can learn from their subsequent enrollment at other institutions of higher education. Using data from the National Student Clearinghouse, we analyzed the 515 students who were not retained from the Fall 2006 freshman class, including the 200 who had a cumulative GPA of at least a 2.00 and could have succeeded at Georgia Tech. Our findings are as follows:

- A total of 173 degrees were awarded to 171 former Georgia Tech students with 79% earning bachelor's degrees; 18% earning associate's degrees and 3% earning unspecified degrees. Within this group of degree recipients, 98 (57%) had a cumulative GPA of 2.00 or greater while they were enrolled at Georgia Tech.
- These 98 students earned 100 degrees with 91 bachelor's (91%); 8 associate's/certificates (8%); and one unspecified degree (1%). Sixty-six bachelor's degrees were awarded in disciplines available at Georgia Tech (73%) while the remaining 25 were awarded in disciplines not found at Georgia Tech (27%). The degrees awarded to this group that were most often available at Georgia Tech included Business Administration/Management, Computer Science, Biology and Psychology. A total of 11 engineering degrees were awarded outside of Georgia Tech including Mechanical, Chemical, Civil and Electrical Engineering and it is interesting to note that all of these degrees were awarded by institutions outside of Georgia. The most popular degrees for disciplines not offered at Georgia Tech included Education, English, Nursing, and Sociology.
- 72% of the students returned to their home state while 28% went outside of their home state to pursue their undergraduate degrees. Institutions awarding the most degrees to non-retained Georgia Tech students with a 2.00 GPA or greater include the University of Georgia, Georgia State University, Kennesaw State University, and the University of Maryland at College Park.
- If Georgia Tech had retained and graduated the 66 bachelor's recipients who received their degrees elsewhere even though the discipline was available at Georgia Tech, the six-year graduation rate for Georgia Tech would be 82% for the 2006 freshman cohort.



## Appendix

**Table 5. Retention Rates by Gender**

Freshman Cohort			Retention Rates (to next Fall term)					
Year	Gender	n	2nd Yr	3rd Yr	4th Yr	5th Yr	6th Yr	7th Yr
2002	<b>Total</b>	<b>2277</b>	<b>89.6%</b>	<b>*83.9%</b>	<b>*81.8%</b>	<b>*80.4%</b>	<b>*79.6%</b>	<b>*79.9%</b>
	Female	636	90.9%	86.9%	84.9%	84.3%	84.0%	84.0%
	Male	1641	89.1%	82.7%	80.6%	78.9%	78.0%	78.3%
2003	<b>Total</b>	<b>2225</b>	<b>*92.1%</b>	<b>*85.9%</b>	<b>*83.9%</b>	<b>*82.4%</b>	<b>*81.7%</b>	<b>*81.9%</b>
	Female	607	94.6%	89.5%	86.3%	86.7%	86.3%	86.7%
	Male	1618	91.2%	84.5%	82.9%	80.8%	80.0%	80.1%
2004	<b>Total</b>	<b>2575</b>	<b>*91.8%</b>	<b>*86.5%</b>	<b>*84.4%</b>	<b>*82.5%</b>	<b>*82.0%</b>	<b>*82.7%</b>
	Female	768	94.4%	89.3%	88.5%	86.8%	86.8%	87.1%
	Male	1807	90.7%	85.3%	82.7%	80.7%	79.9%	80.8%
2005	<b>Total</b>	<b>2419</b>	<b>*92.5%</b>	<b>*86.9%</b>	<b>*84.1%</b>	<b>*82.4%</b>	<b>*81.7%</b>	<b>*81.9%</b>
	Female	714	94.4%	89.4%	86.8%	87.0%	85.0%	85.4%
	Male	1705	91.8%	85.9%	83.0%	80.4%	80.3%	80.5%
2006	<b>Total</b>	<b>2838</b>	<b>*92.4%</b>	<b>*86.6%</b>	<b>*84.2%</b>	<b>*82.9%</b>	<b>*81.6%</b>	<b>81.9%</b>
	Female	890	94.7%	90.1%	88.5%	87.6%	86.9%	86.7%
	Male	1948	91.4%	85.0%	82.2%	80.7%	79.3%	79.7%
2007	<b>Total</b>	<b>2624</b>	<b>93.3%</b>	<b>88.4%</b>	<b>*87.0%</b>	<b>*84.5%</b>	<b>*84.5%</b>	
	Female	854	94.4%	89.9%	89.0%	86.9%	87.0%	
	Male	1770	92.8%	87.6%	86.0%	83.4%	83.4%	
2008	<b>Total</b>	<b>2633</b>	<b>*93.0%</b>	<b>*87.8%</b>	<b>*85.9%</b>	<b>*84.8%</b>		
	Female	838	94.9%	90.1%	89.0%	88.1%		
	Male	1795	92.1%	86.7%	84.5%	83.3%		
2009	<b>Total</b>	<b>2655</b>	<b>94.2%</b>	<b>*89.6%</b>	<b>*88.2%</b>			
	Female	887	94.9%	92.8%	91.4%			
	Male	1768	93.9%	88.1%	86.6%			
2010	<b>Total</b>	<b>2706</b>	<b>94.9%</b>	<b>*91.5%</b>				
	Female	976	95.9%	93.8%				
	Male	1730	94.3%	90.2%				
2011	<b>Total</b>	<b>2692</b>	<b>94.8%</b>					
	Female	1015	95.2%					
	Male	1677	94.6%					

\* Significant difference ( $p \leq 0.05$ )

**Table 6. Retention Rates by Ethnicity**

Freshman Cohort			Retention Rates (to next Fall term)					
Year	Ethnicity	n	2nd Yr	3rd Yr	4th Yr	5th Yr	6th Yr	7th Yr
2002	<b>Total</b>	<b>2277</b>	<b>*89.6%</b>	<b>83.9%</b>	<b>81.8%</b>	<b>*80.4%</b>	<b>*79.7%</b>	<b>*79.9%</b>
	Asian	317	93.7%	87.4%	84.2%	84.2%	83.9%	83.9%
	Black or African American	120	88.3%	79.2%	73.3%	70.0%	67.5%	69.2%
	Hispanic or Latino	63	85.7%	84.1%	82.5%	82.5%	85.7%	84.1%
	International	92	90.2%	85.9%	82.6%	84.8%	84.8%	82.6%
	Other <sup>1</sup>	27	92.3%	80.8%	80.8%	73.1%	69.2%	73.1%
	White	1658	89.0%	83.5%	81.9%	80.3%	79.4%	79.7%
2003	<b>Total</b>	<b>2225</b>	<b>92.1%</b>	<b>85.9%</b>	<b>83.9%</b>	<b>*82.4%</b>	<b>*81.7%</b>	<b>*81.9%</b>
	Asian	317	92.7%	86.4%	81.4%	82.6%	80.1%	80.4%
	Black or African American	118	94.1%	84.7%	83.9%	72.0%	72.9%	72.9%
	Hispanic or Latino	62	100.0%	91.9%	91.9%	87.1%	85.5%	83.9%
	International	107	95.3%	93.5%	91.6%	86.9%	87.9%	88.8%
	Other <sup>1</sup>	44	95.5%	88.6%	77.3%	79.5%	81.8%	81.8%
	White	1577	91.2%	85.0%	83.7%	82.7%	82.1%	82.3%
2004	<b>Total</b>	<b>2575</b>	<b>*91.8%</b>	<b>*86.5%</b>	<b>*84.4%</b>	<b>82.5%</b>	<b>82.0%</b>	<b>82.7%</b>
	Asian	379	94.2%	90.5%	87.1%	85.0%	83.4%	83.6%
	Black or African American	145	93.8%	86.9%	83.4%	79.3%	75.9%	76.6%
	Hispanic or Latino	104	94.2%	90.4%	87.5%	84.6%	84.6%	85.6%
	International	103	96.1%	95.1%	94.1%	91.2%	89.2%	91.2%
	Other <sup>1</sup>	56	91.1%	85.7%	87.5%	85.7%	89.3%	87.5%
	White	1788	90.8%	84.9%	83.1%	81.5%	81.4%	82.2%
2005	<b>Total</b>	<b>2419</b>	<b>*92.5%</b>	<b>*86.9%</b>	<b>*84.1%</b>	<b>*82.4%</b>	<b>*81.7%</b>	<b>*81.9%</b>
	Asian	313	95.5%	89.5%	87.2%	85.9%	85.3%	85.6%
	Black or African American	143	93.7%	84.6%	76.2%	69.9%	63.6%	63.6%
	Hispanic or Latino	110	93.6%	91.7%	88.1%	84.4%	83.5%	82.6%
	International	73	94.5%	87.7%	82.2%	84.9%	86.3%	83.6%
	Other <sup>1</sup>	79	97.5%	96.2%	93.7%	88.6%	88.6%	88.6%
	White	1701	91.5%	85.9%	83.6%	82.2%	81.9%	82.4%
2006	<b>Total</b>	<b>2838</b>	<b>92.4%</b>	<b>86.6%</b>	<b>84.2%</b>	<b>*82.9%</b>	<b>*81.6%</b>	<b>*81.9%</b>
	Asian	442	93.2%	89.1%	87.3%	88.0%	85.3%	85.3%
	Black or African American	151	89.4%	82.1%	78.8%	70.9%	72.2%	71.5%
	Hispanic or Latino	133	94.7%	85.0%	82.0%	82.7%	78.9%	79.7%
	International	111	91.9%	90.1%	85.6%	86.5%	85.6%	84.7%
	Other <sup>1</sup>	89	93.3%	88.8%	87.6%	88.8%	84.3%	86.5%
	White	1912	92.3%	86.2%	83.8%	82.2%	81.4%	81.7%
2007	<b>Total</b>	<b>2624</b>	<b>93.3%</b>	<b>88.4%</b>	<b>87.0%</b>	<b>84.5%</b>	<b>84.5%</b>	
	Asian	435	94.7%	90.8%	90.3%	85.5%	87.3%	
	Black or African American	117	94.0%	88.9%	84.6%	76.9%	80.3%	
	Hispanic or Latino	132	91.7%	85.6%	84.1%	79.5%	77.3%	
	International	160	93.7%	89.3%	86.8%	85.5%	84.9%	
	Other <sup>1</sup>	78	94.8%	90.9%	85.7%	83.1%	80.5%	
	White	1702	92.9%	87.7%	86.6%	85.2%	84.8%	

**Table 6. Retention Rates by Ethnicity\***

Freshman Cohort			Retention Rates (to next Fall term)					
Year	Ethnicity	n	2nd Yr	3rd Yr	4th Yr	5th Yr	6th Yr	7th Yr
2008	<b>Total</b>	<b>2633</b>	<b>93.0%</b>	<b>87.8%</b>	<b>85.9%</b>	<b>84.8%</b>		
	Asian	466	95.3%	91.0%	88.2%	87.6%		
	Black or African American	128	91.4%	88.3%	88.3%	84.4%		
	Hispanic or Latino	117	90.6%	87.2%	82.9%	84.6%		
	International	175	92.6%	82.3%	83.4%	85.1%		
	Other	73	87.7%	80.8%	79.5%	76.7%		
	White	1674	92.9%	87.8%	85.9%	84.5%		
2009	<b>Total</b>	<b>2655</b>	<b>*94.2%</b>	<b>*89.6%</b>	<b>*88.2%</b>			
	Asian	496	96.6%	94.8%	94.2%			
	Black or African American	117	94.9%	90.6%	87.2%			
	Hispanic or Latino	94	93.6%	87.2%	84.0%			
	International	306	88.9%	81.0%	82.6%			
	Other <sup>1</sup>	84	92.9%	89.3%	88.1%			
	White	1558	94.6%	89.8%	87.7%			
2010	<b>Total</b>	<b>2706</b>	<b>94.9%</b>	<b>*91.5%</b>				
	Asian	440	95.7%	93.2%				
	Black or African American	145	92.4%	93.8%				
	Hispanic or Latino	166	95.2%	94.0%				
	International	221	91.4%	83.3%				
	Other	109	92.7%	84.4%				
	White	1625	95.4%	92.2%				
2011	<b>Total</b>	<b>2692</b>	<b>*94.8%</b>					
	Asian	444	97.3%					
	Black or African American	166	93.4%					
	Hispanic or Latino	159	95.6%					
	International	237	91.6%					
	Other <sup>1</sup>	110	92.7%					
	White	1576	94.9%					

\* Significant difference ( $p \leq 0.05$ ), when Other category is excluded.

<sup>1</sup> Other includes: American Indian or Alaskan Native, Native Hawaiian or Other Pacific Islander, Unknown and Two or More Races

<sup>2</sup> Ethnicity categories combined when populations totaled less than five.

**Table 7. Retention Rates by College**

Freshman Cohort			Retention Rates (to next Fall term)					
Year	Entering College	n	2nd Yr	3rd Yr	4th Yr	5th Yr	6th Yr	7th Yr
<b>2002</b>	<b>Total</b>	<b>2277</b>	<b>89.6%</b>	<b>83.9%</b>	<b>81.8%</b>	<b>80.4%</b>	<b>79.7%</b>	<b>79.9%</b>
	Architecture	111	87.4%	83.8%	82.9%	81.1%	82.0%	81.1%
	Computing	253	91.3%	85.7%	82.9%	79.0%	78.2%	78.2%
	Engineering	1426	90.0%	83.8%	82.2%	81.1%	80.3%	80.7%
	Ivan Allen	144	86.1%	81.3%	78.5%	79.9%	78.5%	79.9%
	Management	124	87.1%	82.3%	77.4%	75.0%	75.0%	75.8%
	Registrar	10	100.0%	100.0%	90.0%	90.0%	90.0%	90.0%
	Sciences	209	90.0%	84.7%	81.8%	80.4%	79.4%	78.0%
<b>2003</b>	<b>Total</b>	<b>2225</b>	<b>92.1%</b>	<b>85.9%</b>	<b>83.9%</b>	<b>82.4%</b>	<b>81.7%</b>	<b>81.9%</b>
	Architecture	124	93.5%	90.3%	87.1%	87.9%	87.9%	87.1%
	Computing	193	94.8%	87.0%	82.4%	77.2%	78.8%	78.8%
	Engineering	1439	91.7%	85.1%	83.9%	82.7%	81.7%	81.7%
	Ivan Allen	112	91.1%	87.5%	83.9%	84.8%	85.7%	85.7%
	Management	123	93.5%	90.2%	85.4%	82.9%	78.9%	80.5%
	Registrar	7	85.7%	85.7%	85.7%	85.7%	85.7%	85.7%
	Sciences	227	92.0%	84.5%	81.9%	80.5%	80.5%	81.4%
<b>2004</b>	<b>Total</b>	<b>2575</b>	<b>*91.8%</b>	<b>*86.5%</b>	<b>*84.4%</b>	<b>*82.5%</b>	<b>82.0%</b>	<b>*82.7%</b>
	Architecture	178	88.8%	80.3%	78.1%	75.8%	76.4%	77.0%
	Computing	185	87.5%	81.5%	79.9%	78.8%	78.3%	78.8%
	Engineering	1658	91.8%	86.5%	84.4%	82.8%	82.0%	82.7%
	Ivan Allen	121	92.6%	89.3%	85.1%	81.0%	81.0%	81.8%
	Management	157	94.3%	93.0%	89.8%	86.0%	87.3%	89.2%
	Sciences	276	95.3%	88.7%	88.3%	86.1%	85.4%	85.8%
	<b>2005</b>	<b>Total</b>	<b>2419</b>	<b>92.5%</b>	<b>86.9%</b>	<b>84.1%</b>	<b>82.4%</b>	<b>81.7%</b>
Architecture		145	89.0%	88.3%	84.8%	84.1%	80.7%	82.1%
Computing		158	90.5%	83.5%	82.3%	77.8%	77.2%	75.9%
Engineering		1524	92.8%	87.1%	84.2%	82.4%	82.2%	82.4%
Ivan Allen		173	97.1%	88.4%	87.3%	85.0%	85.5%	86.1%
Management		163	91.4%	87.7%	80.9%	84.6%	80.9%	80.2%
Sciences		256	91.8%	85.5%	84.0%	80.9%	80.1%	81.3%
<b>2006</b>		<b>Total</b>	<b>2838</b>	<b>92.4%</b>	<b>86.6%</b>	<b>84.2%</b>	<b>82.9%</b>	<b>81.6%</b>
	Architecture	174	94.8%	88.5%	88.5%	86.2%	85.1%	85.1%
	Computing	231	92.6%	84.4%	83.1%	79.2%	78.4%	79.2%
	Engineering	1760	93.1%	87.3%	84.5%	83.6%	82.1%	82.3%
	Ivan Allen	184	91.8%	86.4%	85.9%	84.8%	82.1%	82.6%
	Management	171	90.6%	85.4%	82.5%	80.7%	82.5%	83.0%
	Sciences	318	88.7%	84.3%	80.8%	79.6%	78.6%	78.6%

**Table 7. Retention Rates by College\***

Freshman Cohort			Retention Rates (to next Fall term)					
Year	Entering College	n	2nd Yr	3rd Yr	4th Yr	5th Yr	6th Yr	7th Yr
<b>2007</b>	<b>Total</b>	<b>2624</b>	<b>93.3%</b>	<b>*88.4%</b>	<b>87.0%</b>	<b>*84.5%</b>	<b>*84.5%</b>	
	Architecture	144	89.6%	86.8%	86.1%	85.4%	84.0%	
	Computing	164	93.9%	89.6%	87.8%	81.1%	81.7%	
	Engineering	1660	93.4%	88.5%	87.7%	85.6%	85.0%	
	Ivan Allen	169	92.9%	82.2%	79.9%	76.9%	76.9%	
	Management	198	97.5%	95.5%	89.9%	87.9%	89.4%	
	Sciences	289	91.3%	86.5%	85.1%	82.4%	85.1%	
<b>2008</b>	<b>Total</b>	<b>2633</b>	<b>93.0%</b>	<b>87.8%</b>	<b>85.9%</b>	<b>84.8%</b>		
	Architecture	128	93.0%	86.7%	86.7%	84.4%		
	Computing	172	93.6%	85.5%	84.3%	82.6%		
	Engineering	1686	93.2%	88.6%	86.7%	85.9%		
	Ivan Allen	199	93.5%	85.4%	83.9%	83.4%		
	Management	170	92.9%	87.1%	85.3%	83.5%		
	Sciences	278	90.6%	86.7%	84.2%	82.0%		
<b>2009</b>	<b>Total</b>	<b>2655</b>	<b>94.2%</b>	<b>89.6%</b>	<b>88.2%</b>			
	Architecture	122	92.6%	86.9%	86.1%			
	Computing	163	94.5%	86.5%	87.7%			
	Engineering	1760	94.4%	89.8%	88.8%			
	Ivan Allen	157	91.7%	88.5%	87.9%			
	Management	166	96.4%	93.4%	91.0%			
	Sciences	287	93.7%	89.9%	84.3%			
<b>2010</b>	<b>Total</b>	<b>2706</b>	<b>94.9%</b>	<b>91.5%</b>				
	Architecture	91	95.6%	92.3%				
	Computing	172	94.8%	91.3%				
	Engineering	1799	95.1%	91.7%				
	Ivan Allen	150	96.0%	90.0%				
	Management	178	93.8%	92.1%				
	Sciences	316	93.4%	90.5%				
<b>2011</b>	<b>Total</b>	<b>2692</b>	<b>94.8%</b>					
	Architecture	92	93.5%					
	Computing	172	94.8%					
	Engineering	1832	95.0%					
	Ivan Allen	127	94.5%					
	Management	170	97.1%					
	Sciences	299	93.0%					

\*Significant difference ( $p \leq 0.05$ )

**Table 8. Graduation Rates by Gender**

Freshman Cohort			Graduation Rates (through Summer term)		
Year	Gender	n	4 Yrs	5 Yrs	6 Yrs
1999	<b>Total</b>	<b>2298</b>	<b>*28.6%</b>	<b>*67.5%</b>	<b>*75.9%</b>
	Female	655	34.5%	77.7%	84.1%
	Male	1643	26.3%	63.5%	72.7%
2000	<b>Total</b>	<b>2243</b>	<b>*33.9%</b>	<b>*68.6%</b>	<b>*76.9%</b>
	Female	641	45.2%	76.4%	81.7%
	Male	1602	29.3%	65.4%	75.0%
2001	<b>Total</b>	<b>2225</b>	<b>*33.1%</b>	<b>*69.3%</b>	<b>*77.6%</b>
	Female	635	46.5%	80.5%	83.8%
	Male	1590	27.7%	64.8%	75.2%
2002	<b>Total</b>	<b>2277</b>	<b>*31.2%</b>	<b>*69.7%</b>	<b>*77.2%</b>
	Female	636	41.8%	78.9%	82.7%
	Male	1641	27.1%	66.1%	75.0%
2003	<b>Total</b>	<b>2225</b>	<b>*30.7%</b>	<b>*70.9%</b>	<b>*79.1%</b>
	Female	607	42.2%	80.4%	85.2%
	Male	1618	26.4%	67.4%	76.9%
2004	<b>Total</b>	<b>2575</b>	<b>*32.8%</b>	<b>*72.2%</b>	<b>*79.7%</b>
	Female	768	43.1%	79.8%	84.5%
	Male	1807	28.4%	68.9%	77.6%
2005	<b>Total</b>	<b>2419</b>	<b>*31.3%</b>	<b>*72.3%</b>	<b>*78.8%</b>
	Female	714	45.5%	80.0%	84.0%
	Male	1705	25.3%	69.0%	76.6%
2006	<b>Total</b>	<b>2838</b>	<b>*33.6%</b>	<b>*72.3%</b>	<b>*79.3%</b>
	Female	890	45.5%	81.1%	85.2%
	Male	1948	28.1%	68.2%	76.6%
2007	<b>Total</b>	<b>2624</b>	<b>*40.9%</b>	<b>*76.3%</b>	
	Female	854	50.0%	82.4%	
	Male	1770	36.4%	73.3%	
2008	<b>Total</b>	<b>2633</b>	<b>*37.0%</b>		
	Female	838	44.2%		
	Male	1795	33.6%		

\* Significant difference ( $p \leq 0.05$ )

**Table 9. Graduation Rates by Ethnicity**

Freshman Cohort			Graduation Rates (through Summer term)		
Year	Ethnicity	n	4 Yrs	5 Yrs	6 Yrs
<b>1999</b>	<b>Total</b>	<b>2298</b>	<b>*28.6%</b>	<b>*67.5%</b>	<b>*75.9%</b>
	Asian	308	36.0%	71.1%	79.9%
	Black or African American	136	10.3%	44.1%	61.8%
	Hispanic or Latino	46	28.3%	63.0%	71.7%
	International	76	55.3%	85.5%	86.8%
	Other <sup>1</sup>	46	39.1%	67.4%	76.1%
	White	1686	27.2%	68.1%	76.0%
<b>2000</b>	<b>Total</b>	<b>2243</b>	<b>*33.9%</b>	<b>*68.6%</b>	<b>*76.9%</b>
	Asian	295	45.4%	73.6%	80.7%
	Black or African American	124	25.0%	55.6%	66.9%
	Hispanic or Latino	63	28.6%	73.0%	74.6%
	International	102	67.6%	79.4%	84.3%
	Other <sup>1</sup>	29	34.5%	69.0%	69.0%
	White	1630	30.6%	67.8%	76.7%
<b>2001</b>	<b>Total</b>	<b>2225</b>	<b>*33.1%</b>	<b>*69.3%</b>	<b>*77.6%</b>
	Asian	349	44.1%	71.3%	77.7%
	Black or African American	110	23.6%	61.8%	68.2%
	Hispanic or Latino	47	29.8%	76.6%	85.1%
	International	80	63.8%	81.3%	85.0%
	Other <sup>1</sup>	19	47.4%	84.2%	89.5%
	White	1620	29.8%	68.3%	77.5%
<b>2002</b>	<b>Total</b>	<b>2277</b>	<b>*31.2%</b>	<b>*69.7%</b>	<b>*77.2%</b>
	Asian	317	37.9%	75.4%	81.1%
	Black or African American	120	17.5%	54.2%	63.3%
	Hispanic or Latino	63	39.7%	76.2%	82.5%
	International	92	55.4%	77.2%	82.6%
	Other <sup>1</sup>	27	18.5%	59.3%	63.0%
	White	1658	29.5%	69.2%	77.1%
<b>2003</b>	<b>Total</b>	<b>2225</b>	<b>*30.7%</b>	<b>*70.9%</b>	<b>*79.1%</b>
	Asian	317	37.9%	72.2%	77.9%
	Black or African American	118	14.4%	56.8%	70.3%
	Hispanic or Latino	62	16.1%	72.6%	83.9%
	International	107	55.1%	85.0%	86.9%
	Other <sup>1</sup>	44	27.3%	65.9%	79.5%
	White	1577	29.5%	70.8%	79.3%

Table 9. Graduation Rates by Ethnicity (continued)

Freshman Cohort			Graduation Rates (through Summer term)		
Year	Ethnicity	n	4 Yrs	5 Yrs	6 Yrs
2004	<b>Total</b>	<b>2575</b>	<b>*32.8%</b>	<b>*72.2%</b>	<b>*79.7%</b>
	Asian	379	36.9%	74.9%	81.5%
	Black or African American	145	22.8%	64.1%	74.5%
	Hispanic or Latino	104	34.6%	75.0%	83.7%
	International	103	47.6%	84.5%	88.3%
	Other <sup>1</sup>	56	25.0%	69.6%	80.4%
	White	1788	32.0%	71.4%	78.9%
2005	<b>Total</b>	<b>2419</b>	<b>*31.3%</b>	<b>*72.3%</b>	<b>*78.8%</b>
	Asian	313	40.9%	77.0%	82.4%
	Black or African American	143	14.7%	52.4%	60.8%
	Hispanic or Latino	110	30.9%	72.7%	79.1%
	International	73	43.8%	74.0%	80.8%
	Other <sup>1</sup>	79	29.1%	74.7%	84.8%
	White	1701	30.5%	72.8%	79.2%
2006	<b>Total</b>	<b>2838</b>	<b>*33.6%</b>	<b>*72.3%</b>	<b>*79.3%</b>
	Asian	442	39.6%	75.3%	83.3%
	Black or African American	151	19.2%	60.3%	68.2%
	Hispanic or Latino	133	33.8%	71.4%	75.9%
	International	111	45.9%	79.3%	82.0%
	Other <sup>1</sup>	89	37.1%	69.7%	78.7%
	White	1912	32.4%	72.3%	79.4%
2007	<b>Total</b>	<b>2624</b>	<b>*40.9%</b>	<b>*76.3%</b>	
	Asian	435	46.7%	80.5%	
	Black or African American	117	30.8%	66.7%	
	Hispanic or Latino	132	29.5%	66.7%	
	International	160	47.5%	75.0%	
	Other <sup>1</sup>	78	44.9%	73.1%	
	White	1702	40.1%	76.9%	
2008	<b>Total</b>	<b>2633</b>	<b>*37.0%</b>		
	Asian	466	41.8%		
	Black or African American	128	34.4%		
	Hispanic or Latino	117	30.8%		
	International	175	49.1%		
	Other <sup>1</sup>	73	38.4%		
	White	1674	34.9%		

\* Significant difference ( $p \leq 0.05$ ), when Other category is excluded.

<sup>1</sup> Other includes: American Indian or Alaskan Native, Native Hawaiian or Other Pacific Islander, Unknown and Two or More Races

<sup>2</sup> Ethnicity categories combined when populations totaled less than five.



**Table 10. Graduation Rates by College**

Freshman Cohort			Graduation Rates (through Summer term)		
Year	College	n	4 Yrs	5 Yrs	6 Yrs
<b>1999</b>	<b>Total</b>	<b>2298</b>	<b>*28.6%</b>	<b>*67.5%</b>	<b>75.9%</b>
	Architecture	108	45.4%	73.1%	77.8%
	Computing	353	33.1%	64.0%	75.1%
	Engineering	1356	23.5%	66.2%	75.7%
	Ivan Allen	97	46.4%	75.3%	79.4%
	Management	128	24.2%	68.0%	71.9%
	Sciences	256	37.5%	74.2%	78.5%
<b>2000</b>	<b>Total</b>	<b>2243</b>	<b>*33.9%</b>	<b>68.6%</b>	<b>76.9%</b>
	Architecture	117	44.4%	75.2%	82.1%
	Computing	376	33.2%	66.8%	76.1%
	Engineering	1309	29.2%	67.9%	77.2%
	Ivan Allen	99	50.5%	74.7%	78.8%
	Management	106	43.4%	67.0%	71.7%
	Registrar	5	60.0%	60.0%	80.0%
Sciences	231	44.2%	70.1%	75.3%	
<b>2001</b>	<b>Total</b>	<b>2225</b>	<b>*33.5%</b>	<b>*69.3%</b>	<b>77.6%</b>
	Architecture	96	46.9%	84.4%	85.4%
	Computing	335	34.0%	66.6%	77.9%
	Engineering	1289	27.2%	67.9%	77.9%
	Ivan Allen	137	54.7%	75.9%	79.6%
	Management	137	46.0%	69.3%	72.3%
	Registrar	5	60.0%	80.0%	100.0%
Sciences	226	42.5%	70.4%	73.9%	
<b>2002</b>	<b>Total</b>	<b>2277</b>	<b>*31.2%</b>	<b>*69.7%</b>	<b>77.2%</b>
	Architecture	111	42.3%	77.5%	79.3%
	Computing	253	25.3%	60.5%	75.1%
	Engineering	1426	27.8%	70.0%	78.1%
	Ivan Allen	144	45.1%	73.6%	77.1%
	Management	124	36.3%	67.7%	72.6%
	Registrar	10	50.0%	80.0%	80.0%
Sciences	209	42.1%	72.7%	75.1%	
<b>2003</b>	<b>Total</b>	<b>2225</b>	<b>*30.7%</b>	<b>*70.9%</b>	<b>79.1%</b>
	Architecture	124	41.1%	81.5%	83.1%
	Computing	193	28.5%	65.3%	75.1%
	Engineering	1439	25.6%	69.8%	79.6%
	Ivan Allen	112	45.5%	77.7%	79.5%
	Management	123	46.3%	74.8%	78.0%
	Registrar	7	57.1%	71.4%	85.7%
Sciences	227	42.3%	71.8%	78.0%	

**Table 10. Graduation Rates by College (continued)**

Freshman Cohort			Graduation Rates (through Summer term)		
Year	College	n	4 Yrs	5 Yrs	6 Yrs
<b>2004</b>	<b>Total</b>	<b>2575</b>	<b>*32.8%</b>	<b>*72.2%</b>	<b>*79.7%</b>
	Architecture	178	34.3%	71.3%	74.7%
	Computing	185	29.7%	66.5%	73.0%
	Engineering	1658	28.5%	70.6%	79.9%
	Ivan Allen	121	39.7%	76.0%	81.0%
	Management	157	43.3%	82.8%	84.7%
	Sciences	276	51.1%	77.9%	82.2%
<b>2005</b>	<b>Total</b>	<b>2419</b>	<b>*31.3%</b>	<b>72.3%</b>	<b>78.8%</b>
	Architecture	145	48.3%	75.2%	78.6%
	Computing	158	22.8%	63.3%	72.2%
	Engineering	1524	27.0%	72.1%	79.1%
	Ivan Allen	173	44.5%	76.3%	83.8%
	Management	163	30.7%	74.8%	76.7%
	Sciences	256	43.8%	72.7%	78.9%
<b>2006</b>	<b>Total</b>	<b>2838</b>	<b>*33.6%</b>	<b>72.3%</b>	<b>79.3%</b>
	Architecture	174	38.5%	77.6%	83.3%
	Computing	231	30.7%	69.7%	76.2%
	Engineering	1760	28.9%	71.3%	79.6%
	Ivan Allen	184	47.8%	76.6%	81.0%
	Management	171	45.0%	77.8%	81.9%
	Sciences	318	44.3%	71.4%	75.5%
<b>2007</b>	<b>Total</b>	<b>2624</b>	<b>*40.9%</b>	<b>76.3%</b>	
	Architecture	144	47.2%	76.4%	
	Computing	164	46.3%	74.4%	
	Engineering	1660	36.6%	75.9%	
	Ivan Allen	169	50.3%	72.8%	
	Management	198	50.0%	82.3%	
	Sciences	289	47.1%	77.5%	
<b>2008</b>	<b>Total</b>	<b>2633</b>	<b>*37.0%</b>		
	Architecture	128	51.6%		
	Computing	172	42.4%		
	Engineering	1686	32.2%		
	Ivan Allen	199	47.2%		
	Management	170	39.4%		
	Sciences	278	47.1%		

\* Significant difference ( $p \leq 0.05$ )