



Georgia Institute
of Technology

**Annual First-Time Freshman
Retention and Graduation Study**

Office of Institutional Research and Planning

Fall 2013

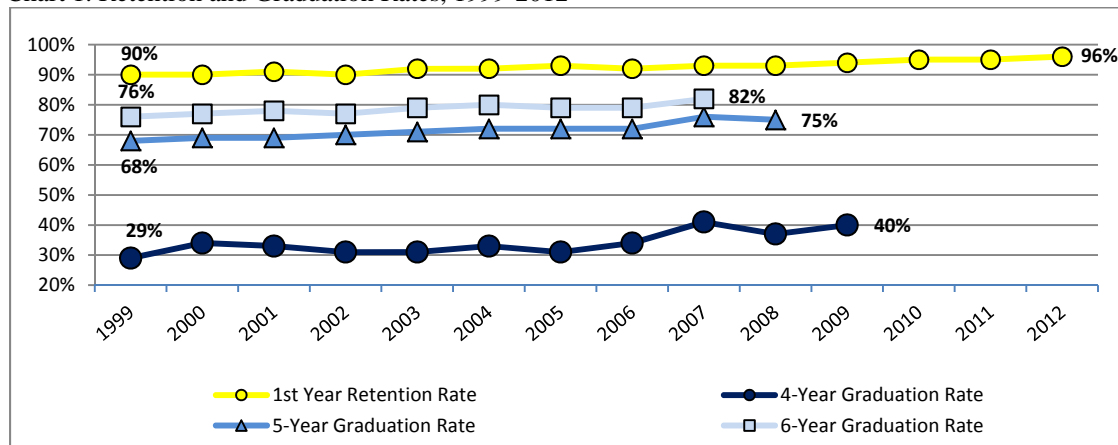
**Georgia Institute of Technology
Institutional Research and Planning
Annual First-Time Freshman Retention and Graduation Study**

Institutional Research and Planning has studied the retention of Georgia Tech students from 1993 through 2013. Cohorts have been defined as first-time students who entered in the respective summer or fall terms and were full-time in the cohort-year fall term. Retention is defined as being enrolled as of (taking classes or participating in co-op/internship programs) or having graduated by each successive fall term. This report tracks retention through year seven and graduation through year six for each cohort in total, by gender, by ethnicity, by college of entry and by Pell status (see Tables 3 through 12). Chi-Square tests of significance ($p \leq 0.05$) on each cohort's progression were conducted by these characteristics. Second-year retention was examined by an expanded set of characteristics for the 2008 through 2012 cohorts (see Table 1 and Table 2).

Executive Summary

- The percentage of first-time, full-time freshman students returning for their second year rose from 90% for the 1999 cohort to 96% for the 2012 cohort. Four-, five- and six-year graduation rates have increased over the same time frame, with six-year graduation rates rising from 76% for the fall 1999 cohort to the historic rate of 82% for the fall 2007 cohort group. (see Chart 1).
- Retention and graduation rates for students receiving Pell were tracked for the first time in this study. Retention rates for those receiving Pell were similar to those students not receiving it; however, graduation rates at the fourth and fifth year were significantly higher for those not receiving the grant (Tables 8 and 12).
- Females were retained at a higher rate than males in all cohorts examined. Second year retention for females in the fall 2012 cohort increased nearly 2% over fall 2011 while second year retention for males remained the same from cohort 2011 to cohort 2012. Four year graduation rates for the 2009 cohort were the second highest for both males and females. Only the 2007 cohort had higher four year graduation rates. The six-year graduation rates for both males and females reached historic levels for the 2007 cohort (Tables 5 and 9).
- Significant differences in retention by ethnicity were most frequently observed in years two, five, six, and seven. For the most recent cohorts International students experienced the lowest retention rates. However, International students typically graduated at rates higher than the institute average, so stop-out patterns may be a contributing factor to the retention rates observed. Significant differences in four, five, and six year graduation rates were noted for all cohorts by ethnicity. (Tables 6 and 10).
- No significant differences were observed by college of entry for retention. Significant differences were observed for four-year and five-year graduation rates, with the Ivan Allen College most frequently experiencing higher four-year rates. Except for the 2004 cohort, no significant differences in six-year graduation rates were observed (Tables 7 and 11).

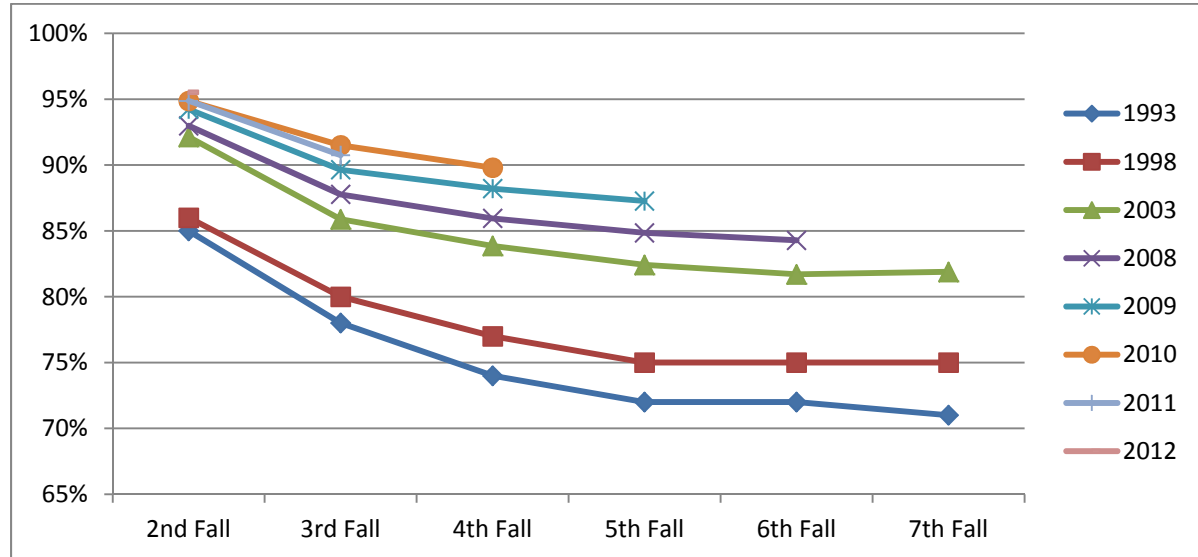
Chart 1. Retention and Graduation Rates, 1999-2012



Retention Highlights

The second-year retention rates have improved from 90% in 2002 to a historic rate of 96% for the 2012 cohort. High retention rates for third-year (91%) and sixth-year (84%) were maintained for the 2011 and 2008 cohorts, respectively. Historic fourth-year (90%), fifth-year (87%), and seventh-year (85%) retention rates were observed for the 2010, 2009 and 2007 cohorts, respectively (Table 3).

Chart 2. Freshman Cohort Retention to the Seventh Fall



For the 2012 cohort, retention rates by gender reached milestones with 95% of males and 97% of females returning fall 2013 for an overall retention rate of 96% (Table 5). Asian students were retained at a higher rate (99%) than any other race/ethnicity (Table 6).

Chart 3. Overall First to Second-Year and Second to Third-Year Retention

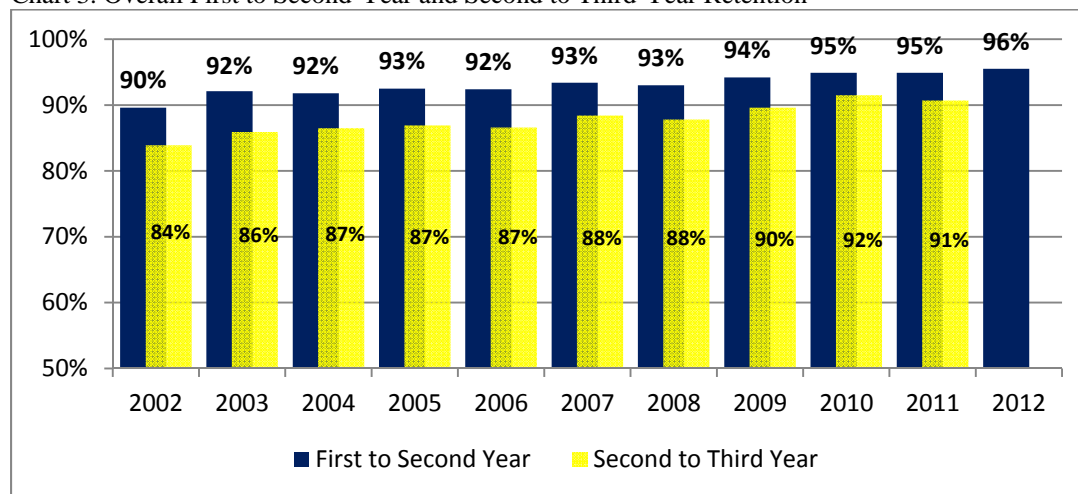


Table 1. Chi-Square Results for Retention to the Second Year

	2008 Cohort	2009 Cohort	2010 Cohort	2011 Cohort	2012 Cohort
Cohort	93.0%	94.2%	94.9%	94.8%	95.5%
Female	* 94.9%	94.9%	95.9%	95.2%	* 97.1%
Male	92.1%	93.8%	94.3%	94.6%	94.7%
Asian	95.3%	* 96.6%	95.7%	* 97.3%	* 98.7%
Black or African American	91.4%	94.9%	92.4%	93.4%	92.3%
White	92.9%	94.6%	95.4%	94.9%	95.0%
Hispanic or Latino	90.6%	93.6%	95.2%	95.6%	96.6%
Other	87.7%	92.9%	92.7%	92.7%	96.9%
International	92.6%	88.6%	91.4%	91.6%	93.8%
International	92.6%	* 88.6%	* 91.4%	* 91.6%	93.8%
Underrepresented Minority	91.1%	96.6%	94.0%	94.5%	94.8%
Not Underrepresented Minority	93.2%	96.6%	95.3%	95.3%	96.0%
In-State	* 94.3%	* 95.8%	95.5%	* 95.9%	96.2%
Out-of-State	90.6%	91.8%	93.8%	93.1%	94.8%
International	92.6%	* 88.6%	* 91.4%	* 91.6%	93.8%
U.S. Resident	93.0%	94.9%	95.2%	95.2%	95.8%
Fraternity/Sorority	95.6%	95.6%	96.1%	* 97.2%	* 97.9%
Non-Member	92.1%	93.8%	94.6%	94.0%	95.0%
Off Campus	90.4%	91.2%	*90.2%	93.1%	90.3%
On Campus Housing	93.1%	94.3%	95.0%	94.9%	95.7%
Enrolled in GT1000	*92.2%	*95.0%	* 95.9%	95.2%	95.9%
Not Enrolled in GT1000	90.8%	92.5%	98.8%	94.3%	95.0%
Freshman Experience	93.0%	94.5%	95.1%	94.9%	* 96.0%
Non-Freshman Experience	93.0%	93.1%	94.3%	94.5%	91.4%
GT1000 & FE	*94.0%	*95.3%	* 96.6%	95.3%	* 96.5%
GT1000 or FE or Neither	91.7%	93.0%	93.3%	94.2%	94.4%
Pell	94.1%	93.3%	93.9%	95.3%	94.2%
No Pell	92.7%	94.5%	95.1%	94.7%	95.8%
Architecture	93.0%	92.6%	95.6%	93.5%	96.7%
Computing	93.6%	94.5%	94.8%	94.8%	95.9%
Engineering	93.2%	94.4%	95.1%	95.0%	96.0%
Ivan Allen	93.5%	91.7%	96.0%	94.5%	93.0%
Scheller College of Business	92.9%	96.4%	93.8%	97.1%	93.0%
Sciences	90.6%	93.7%	93.4%	93.0%	94.1%
Good Standing	95.4%	95.8%	96.7%	96.5%	96.3%
Warning	75.2%	82.1%	74.0%	71.9%	79.6%
Probation	27.3%	39.1%	26.5%	36.4%	36.4%

* Significant difference ($p < 0.05$)

1 Other includes: American Indian or Alaskan Native, Native Hawaiian or Other Pacific Islander, Unknown and Two or More Races.

2 Underrepresented Minority includes American Indian or Alaskan Native, Black or African American, Hispanic or Latino, Native Hawaiian or Other Pacific Islander and Two or More Races.

- Significant differences in second-year retention were noted for the following characteristics: gender, ethnicity, Greek participation, and freshman experience participation, as well as participation in both GT1000 and freshman experience for the 2012 freshman cohort.
 - Through the five cohorts examined, ethnicity, Minority status, state residency, participation in both GT1000 and freshman experience and International status were observed to have the most significant second-year retention differences.
 - Pell status and college of entry showed the least significant second-year retention differences (Table 1).
- Significant differences in second-year retention were also noted for the following characteristics: SAT Math, SAT Verbal, SAT Writing, High School GPA, Admissions Index and First-Year GPA for the 2012 cohort group.
 - Over the last five cohorts, High School GPA, Admissions Index and First-Year GPA were the characteristics most frequently observed to have significant second-year retention differences among the five most recent cohorts.
 - The characteristics least observed to have significant second-year retention differences were SAT Math and SAT Verbal (Table 2).

Table 2. T-test Results for Retention to the Second Year

Category	Retention Status	2008 Cohort	2009 Cohort	2010 Cohort	2011 Cohort	2012 Cohort
SAT Math	Retained	700	704	*705	*712	*720
	Not Retained	691	698	679	700	692
SAT Verbal	Retained	653	*652	*664	672	*677
	Not Retained	656	656	639	676	652
SAT Writing	Retained	*634	*633	*645	654	*660
	Not Retained	619	616	610	655	631
High School GPA	Retained	*3.76	*3.82	*3.87	*3.89	*3.90
	Not Retained	3.64	3.7	3.75	3.83	3.78
Admissions Index	Retained	*2.95	*3.01	*3.07	*3.12	*3.15
	Not Retained	2.82	2.88	2.88	3.06	2.99
First-Year GPA	Retained	*3.11	*3.14	*3.20	*3.22	*3.30
	Not Retained	2.04	2.28	2.13	2.35	2.63

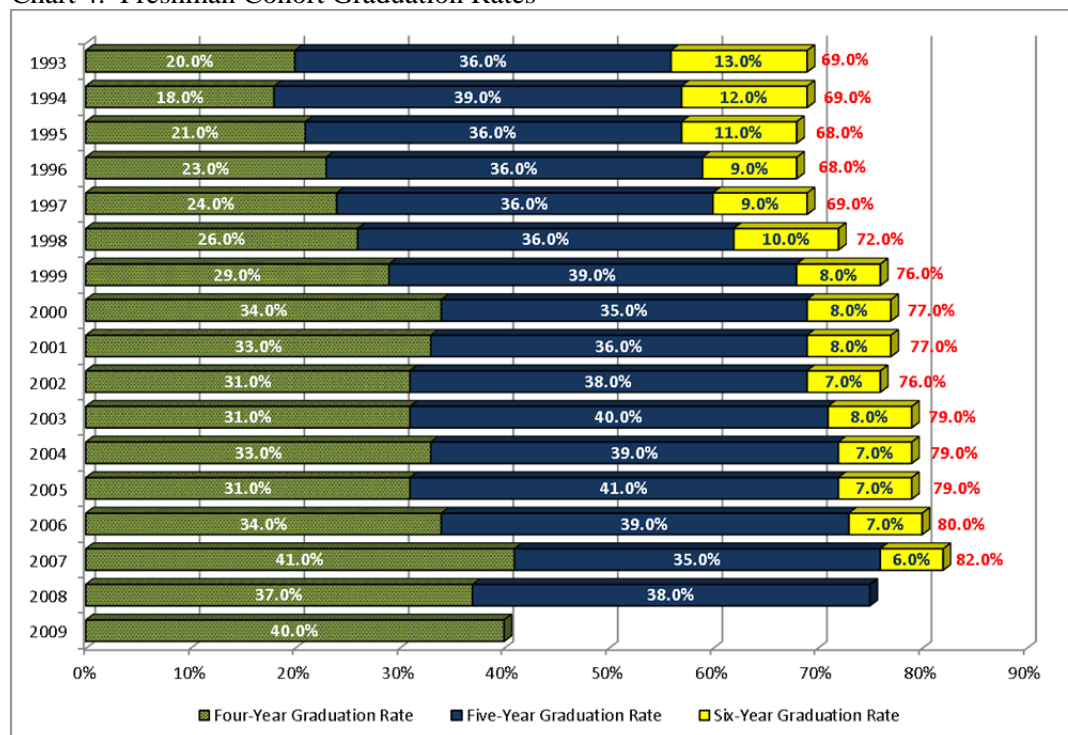
* Significant difference ($p \leq 0.05$)

- Retention beyond the second year was examined by gender, ethnicity, and college of entry.
 - Significant differences were most frequently observed by gender. Females were consistently retained at higher levels for all cohorts examined. These differences were most frequently observed in retention years four, five, and six and least in years three and seven (see Table 5).
 - The highest third-year retention rates for both male (90.2%) and female (93.8%) as well as overall (91.5%) occurred in 2010.
 - Some significant differences by ethnicity were observed. Significant differences were observed more frequently in the fifth, sixth and seventh years of retention, and least frequently in the third and fourth years of retention (Table 6).
 - Few significant differences were observed by college of entry (Table 7).

Graduation Highlights

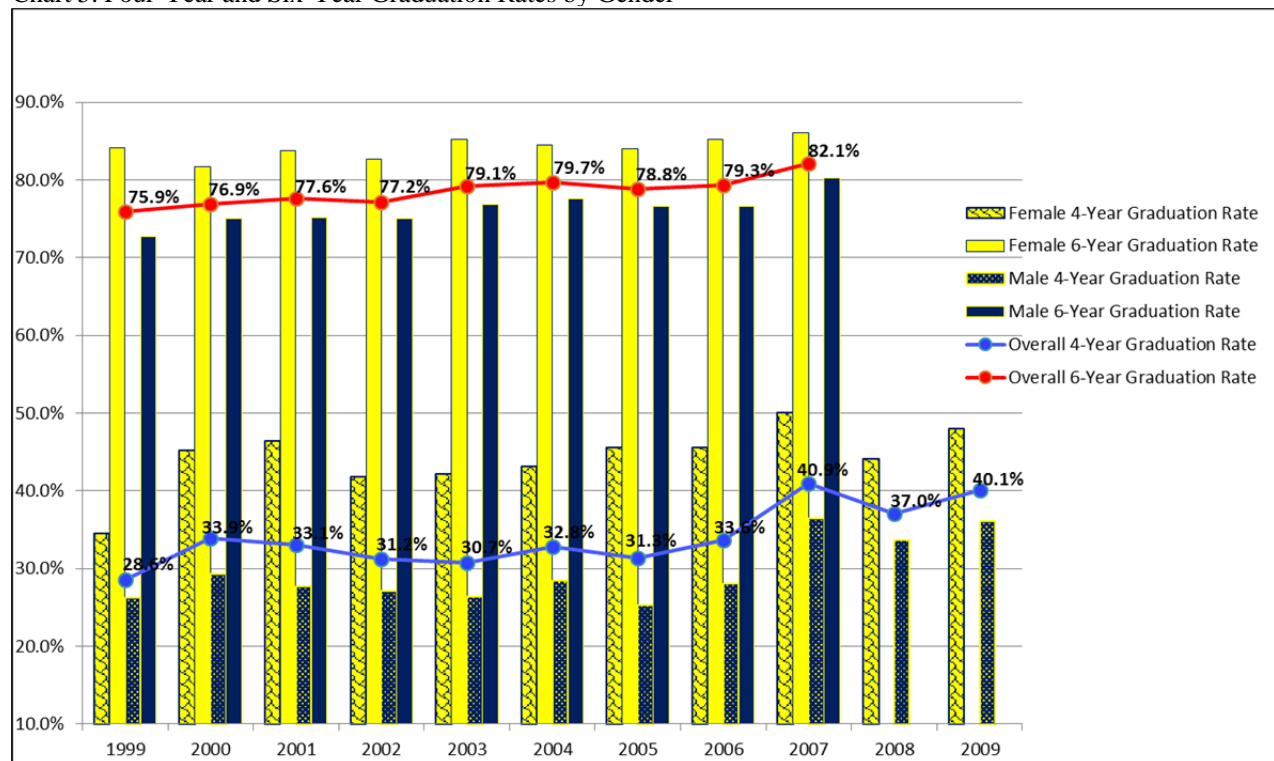
After the notable four-year graduation rate of 41% in 2007 and a drop to 37% in 2008, the 2009 cohort rebounded to a rate of 40% (Table 4). As with the four-year graduation rate, the 2008 cohort's fifth-year graduation rate fell to 75% from a high of 76% in 2007. The six-year graduation rate rose to a historic rate of 82% for the 2007 cohort.

Chart 4. Freshman Cohort Graduation Rates



- Significant differences in four-year, five-year and six-year graduation rates were observed for all cohorts in this study for two of the characteristics examined: gender and ethnicity (Tables 9-10).
- Significant differences were most often observed in gender, with females consistently graduating at significantly higher rates than males at four-year, five-year and six-year (Chart 5).
 - Male four-year graduation rates have increased from 26% to 36% over the last ten years while rates for females have increased from 35% to 48% over the same time.
 - The five-year graduation rate for males rose to over 70% for both the 2007 and 2008 cohorts, while the five-year female graduation rate remained high at over 80%.
 - While females continue to graduate at significantly higher six-year rates for all cohorts studied, both male (80.2%) and female (86.1%) students had the highest six-year graduation rates by gender in the 2007 cohort (Chart 5).

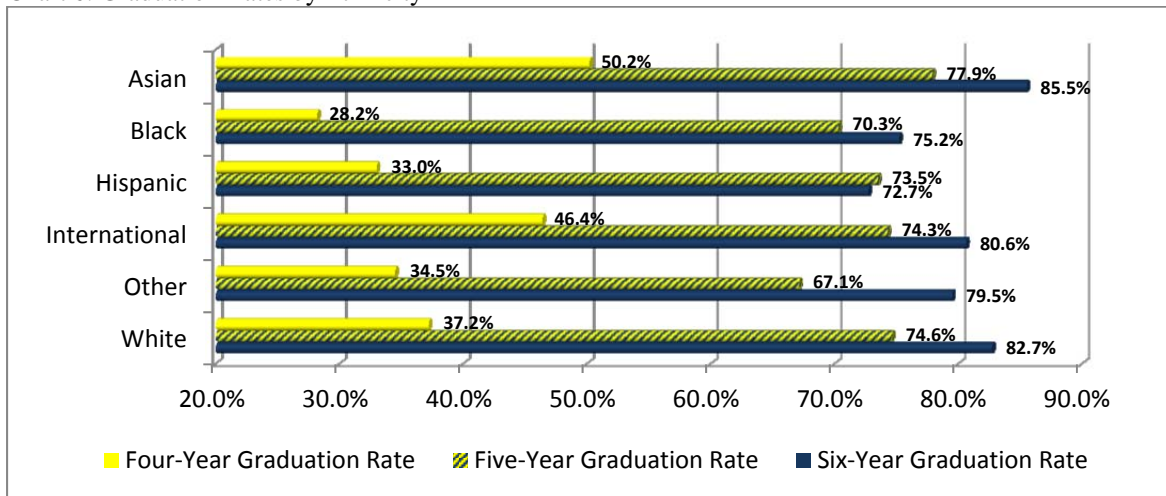
Chart 5. Four-Year and Six-Year Graduation Rates by Gender



- Significant differences in graduation rates at four, five and six-years were observed in all years based on ethnicity, with Asian and International students consistently graduating at higher rates (when the small numbers of American Indian, Native Hawaiian, Two or More races, and Unknown Race/Ethnicity students were excluded), while Black/African-American students consistently graduate at lower rates.
 - After a historic four-year graduation rate in 2008 for Black/African-American students (34.4%), the rate fell to 28.2% for the 2009 cohort, the lowest since the 2006 cohort.
 - In 2008, the five-year graduation rate for the Hispanic or Latino cohort rose 7% to 73.5% over the previous five-year graduation rate (66.7%). This was the highest five-year graduation rate for Hispanic students since the historic rate (76.6%) in 2001.
 - International students most frequently graduated at higher five-year rates, except for the 2005, 2007 and 2008 cohorts where Asian students graduated at the highest rates. Black/African-American students consistently graduated at lower five-year rates, but the most the smallest gap (4.4%) from the institutional average was observed for the most recent 2008 cohort.
 - The six-year graduation rates for Asian and White students were above 82% for the 2007 cohort, contributing to the historic 82.1% six-year graduation rate. The most recent six-year

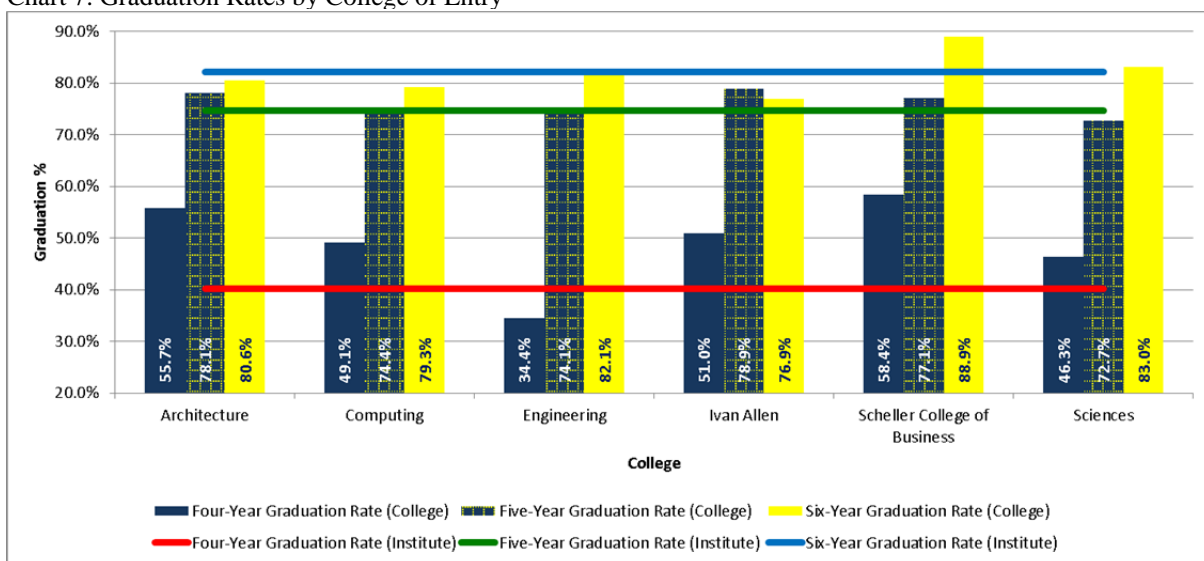
(72.7%) graduation rates for Hispanic students were the lowest observed for this group in recent years and are continuing to decline after five consecutive years of six-year rates above the institutional average (Table 10).

Chart 6. Graduation Rates by Ethnicity



- Significant differences were observed less frequently by college of entry for six-year graduation rates as compared to four- and five-year graduation rates.
 - Students entering the Scheller College of Business and the College of Architecture in the 2009 cohort graduated at higher four-year rates, while over time, the Ivan Allen College have been more consistent in higher four-year graduation rates. Entrants to the College of Engineering most frequently graduated at lower four-year rates.
 - In the past four cohorts, there have not been statistical differences in five-year graduation rates by college of entry. Entrants in the College of Computing most frequently graduated in five-years at lower rates for the earliest cohorts. College of Architecture most frequently graduated in five-years at higher rates for the earliest cohorts; higher rates in the College of Business and the Ivan Allen College were observed for more recent cohorts.
 - College of entry was significant for only one (2004) out of the nine cohorts examined (Table 11) for six-year graduation rates.

Chart 7. Graduation Rates by College of Entry



Pell Status

Retention and graduation rates for students receiving Pell were tracked for the first time in this study. For the purposes of this study, Pell status includes all students who have ever received Pell within the respective cohort groups.

- Retention percentages of those receiving Pell were very similar to those not receiving Pell. The Chi-square test was conducted on cohorts 2005 to 2012.
 - Significant differences were observed in Pell status in the following years; 2005, 2007 and 2008.
 - Second year retention was higher for those who received Pell in most cohort groups, with the exception of 2006, 2009, 2010 and 2012. The trend continues for most other retention years as well.
 - Although the 2012 cohort had the lowest percentage of students with Pell (14.7%), it will increase over the years based on students ever receiving Pell while at Georgia Tech.
- Pell status had a greater effect on graduation. Without exception, those with no Pell graduated in the 4th, 5th and 6th years at a higher rate than those who received Pell.
 - Significant differences were observed in all four-year graduation rates examined and all five-year rates, with the exception of 2008.
 - Students receiving Pell graduated at lower four-year rates for the 5 years examined without exception.
 - Pell status was significant for five year graduation rates for most cohorts examined as well. Five-year graduation rates have significantly increased for those receiving Pell, from a low in 2006 (62.8%) to a high in 2008 (72.6%).
 - Six-year graduation rates are fairly similar between those receiving Pell and those not receiving it. Only the 2006 cohort showed a significant difference by Pell status.

Non-Retained Freshmen

In Fall 2007, Georgia Tech's freshman cohort enrolled for classes with 2,624 students beginning their pursuit of a bachelor's degree. Of the 2,624 students in this cohort, 82% graduated within six years by the end of Summer 2013; 3% did not graduate but were still enrolled during Fall 2013; and 15% left Georgia Tech. It should be noted that of the 402 students who left Georgia Tech without their bachelor's degree, 54% had a cumulative GPA of 1.99 or less while 46% had a cumulative GPA of 2.00 or greater.

Chart 8. Status of the 2007 Entering Freshman Cohort (N=2,624)

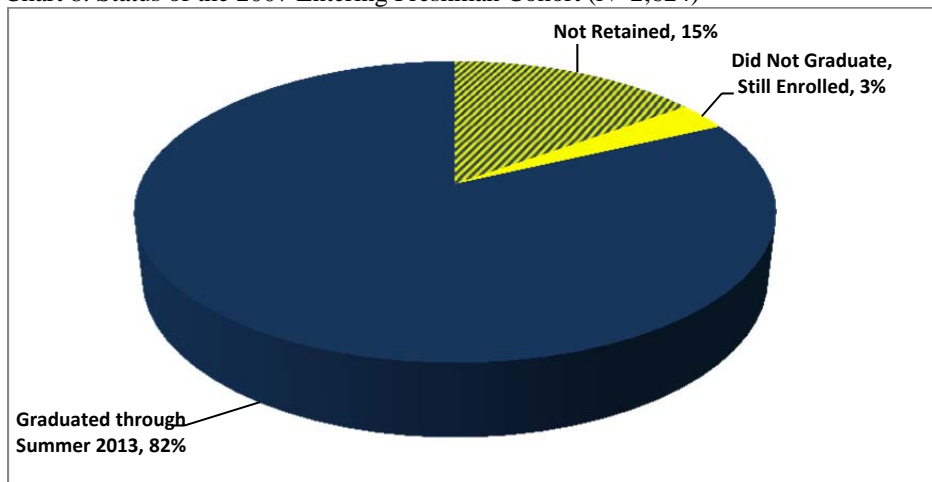
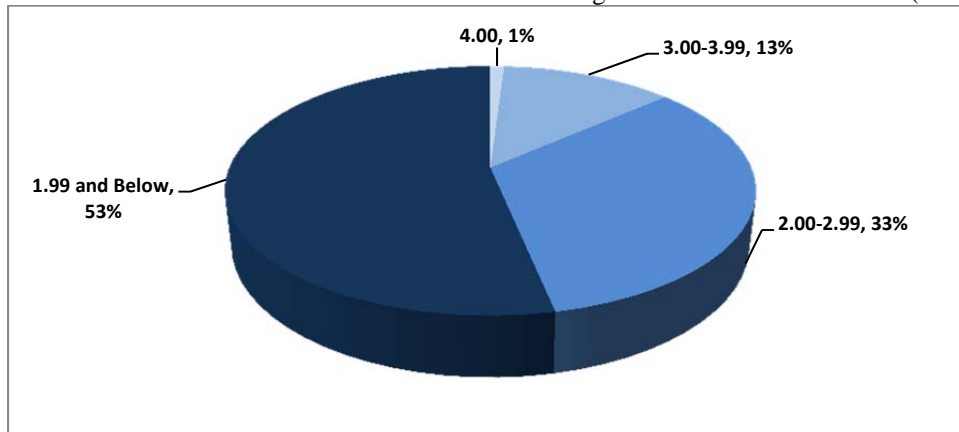


Chart 9. Status of the 2007 Freshman Cohort GPA Ranges of Students Not Retained (N=402)



The group of 186 non-retained students with a cumulative GPA of 2.00 and above represents a tremendous opportunity for Georgia Tech to improve our retention and graduation rates as we can learn from their subsequent enrollment at other institutions of higher education. Using data from the National Student Clearinghouse, we analyzed the 402 students who were not retained from the Fall 2007 freshman class, including the 186 who had a cumulative GPA of at least a 2.00 and could have succeeded at Georgia Tech. Our findings are as follows:

- A total of 185 degrees were awarded to 148 former Georgia Tech students with 84% earning bachelor's degrees; 14% earning associate's degrees and 2% earning unspecified degrees. Within this group of degree recipients, 84 (57%) had a cumulative GPA of 2.00 or greater while they were enrolled at Georgia Tech.
- These 84 students earned 101 degrees with 87 bachelor's (86%); 12 associate's/certificates (12%); and two unspecified degree (2%). Fifty-four bachelor's degrees were awarded in disciplines available at Georgia Tech (62%) while the remaining 33 were awarded in disciplines not found at Georgia Tech (38%). The degrees awarded to this group that were most often available at Georgia Tech included Business Administration/Management, Biology, and Mathematics. A total of 15 engineering bachelor's degrees were awarded outside of Georgia Tech including Mechanical, Biological, Civil, Computer, and Industrial Engineering and it is interesting to note that all of these degrees were awarded by institutions outside of Georgia. The most popular degrees for disciplines not offered at Georgia Tech included History and Political Science.
- 66% of the students returned to their home state while 33% went outside of their home state to pursue their undergraduate degrees. Institutions awarding the most degrees to non-retained Georgia Tech students with a 2.00 GPA or greater include the Kennesaw State University, Emory University, and the Florida State University.
- If Georgia Tech had retained and graduated the 84 bachelor's recipients who received their degrees elsewhere even though the discipline was available at Georgia Tech, the six-year graduation rate for Georgia Tech would be 85% for the 2007 freshman cohort.

Appendix

Table 3. Retention Rates Overall

Freshman Cohort Year	n	Retention Rates (to next Fall term)					
		2nd Yr	3rd Yr	4th Yr	5th Yr	6th Yr	7th Yr
1993	1955	85%	78%	74%	72%	72%	71%
1994	2012	85%	78%	73%	73%	72%	73%
1995	2120	85%	76%	73%	71%	71%	71%
1996	2120	85%	77%	73%	72%	72%	72%
1997	2069	86%	79%	75%	75%	74%	74%
1998	2487	86%	80%	77%	75%	75%	75%
1999	2298	90%	83%	81%	80%	79%	79%
2000	2243	90%	84%	81%	80%	79%	79%
2001	2225	91%	84%	82%	81%	80%	80%
2002	2277	90%	84%	82%	80%	80%	80%
2003	2225	92%	86%	84%	82%	82%	82%
2004	2575	92%	86%	84%	82%	82%	83%
2005	2419	93%	87%	84%	82%	82%	82%
2006	2838	92%	87%	84%	83%	82%	82%
2007	2624	93%	88%	87%	85%	85%	85%
2008	2633	93%	88%	86%	85%	84%	
2009	2655	94%	90%	88%	87%		
2010	2706	95%	92%	90%			
2011	2692	95%	91%				
2012	3039	96%					

Table 4. Graduation Rates Overall

Freshman Cohort Year	n	Graduation Rates (through Summer Term)		
		4 Yrs	5 Yrs	6 Yrs
1993	1955	20%	56%	69%
1994	2012	18%	57%	69%
1995	2120	21%	57%	68%
1996	2120	23%	59%	68%
1997	2069	24%	60%	69%
1998	2087	26%	62%	72%
1999	2298	29%	68%	76%
2000	2243	34%	69%	77%
2001	2225	33%	69%	78%
2002	2277	31%	70%	77%
2003	2225	31%	71%	79%
2004	2575	33%	72%	80%
2005	2419	31%	72%	79%
2006	2838	34%	72%	79%
2007	2624	41%	76%	82%
2008	2633	37%	75%	
2009	2655	40%		

Table 5. Retention Rates by Gender

Year	Freshman Cohort			Retention Rates (to next Fall term)					
	Gender	n	%	2nd Yr	3rd Yr	4th Yr	5th Yr	6th Yr	7th Yr
2002	Total	2277		89.6%	*83.9%	*81.8%	*80.4%	*79.6%	*79.9%
	Female	636	27.9%	90.9%	86.9%	84.9%	84.3%	84.0%	84.0%
	Male	1641	72.1%	89.1%	82.7%	80.6%	78.9%	78.0%	78.3%
2003	Total	2225		*92.1%	*85.9%	*83.9%	*82.4%	*81.7%	*81.9%
	Female	607	27.3%	94.6%	89.5%	86.3%	86.7%	86.3%	86.7%
	Male	1618	72.7%	91.2%	84.5%	82.9%	80.8%	80.0%	80.1%
2004	Total	2575		*91.8%	*86.5%	*84.4%	*82.5%	*82.0%	*82.7%
	Female	768	29.8%	94.4%	89.3%	*88.5%	86.8%	86.8%	87.1%
	Male	1807	70.2%	90.7%	85.3%	82.7%	80.7%	79.9%	80.8%
2005	Total	2419		*92.5%	*86.9%	*84.1%	*82.4%	*81.7%	*81.9%
	Female	714	29.5%	94.4%	89.4%	86.8%	87.0%	85.0%	85.4%
	Male	1705	70.5%	91.8%	85.9%	83.0%	80.4%	80.3%	80.5%
2006	Total	2838		*92.4%	*86.6%	*84.2%	*82.9%	*81.6%	81.9%
	Female	890	31.4%	94.7%	90.1%	88.5%	87.6%	86.9%	86.7%
	Male	1948	68.6%	91.4%	85.0%	82.2%	80.7%	79.3%	79.7%
2007	Total	2624		93.4%	88.4%	*87.1%	*84.6%	*84.6%	*84.8%
	Female	854	32.5%	94.4%	89.9%	89.0%	86.9%	87.0%	87.0%
	Male	1770	67.5%	92.9%	87.7%	86.1%	83.5%	83.5%	83.7%
2008	Total	2633		*93.0%	*87.8%	*85.9%	*84.8%	*84.3%	
	Female	838	31.8%	94.9%	90.1%	89.0%	88.1%	87.6%	
	Male	1795	68.2%	92.1%	86.7%	84.5%	83.3%	82.7%	
2009	Total	2655		94.2%	*89.6%	*88.2%	*87.3%		
	Female	887	33.4%	94.9%	92.8%	91.4%	90.6%		
	Male	1768	66.6%	93.9%	88.1%	86.6%	85.6%		
2010	Total	2706		94.9%	*91.5%	*89.8%			
	Female	976	36.1%	95.9%	93.8%	91.9%			
	Male	1730	63.9%	94.3%	90.2%	88.6%			
2011	Total	2692		94.9%	*90.7%				
	Female	1015	37.7%	95.2%	92.5%				
	Male	1677	62.3%	94.7%	89.7%				
2012	Total	3039		*95.5%					
	Female	1061	34.9%	97.1%					
	Male	1978	65.1%	94.7%					

* Significant difference ($p \leq 0.05$)

Table 6. Retention Rates by Ethnicity

Year	Freshman Cohort		Retention Rates (to next Fall term)						
	Ethnicity	n	%	2nd Yr	3rd Yr	4th Yr	5th Yr	6th Yr	7th Yr
2002	Total	2277		*89.6%	83.9%	81.8%	*80.4%	*79.7%	*79.9%
	Asian	317	13.9%	93.7%	87.4%	84.2%	84.2%	83.9%	83.9%
	Black or African American	120	5.3%	88.3%	79.2%	73.3%	70.0%	67.5%	69.2%
	Hispanic or Latino	63	2.8%	85.7%	84.1%	82.5%	82.5%	85.7%	84.1%
	International	92	4.0%	90.2%	85.9%	82.6%	84.8%	84.8%	82.6%
	Other ¹	27	1.2%	92.3%	80.8%	80.8%	73.1%	69.2%	73.1%
White	1658	72.8%	89.0%	83.5%	81.9%	80.3%	79.4%	79.7%	
2003	Total	2225		92.1%	85.9%	83.9%	*82.4%	*81.7%	*81.9%
	Asian	317	14.2%	92.7%	86.4%	81.4%	82.6%	80.1%	80.4%
	Black or African American	118	5.3%	94.1%	84.7%	83.9%	72.0%	72.9%	72.9%
	Hispanic or Latino	62	2.8%	100.0%	91.9%	91.9%	87.1%	85.5%	83.9%
	International	107	4.8%	95.3%	93.5%	91.6%	86.9%	87.9%	88.8%
	Other ¹	44	2.0%	95.5%	88.6%	77.3%	79.5%	81.8%	81.8%
White	1577	70.9%	91.2%	85.0%	83.7%	82.7%	82.1%	82.3%	
2004	Total	2575		*91.8%	*86.5%	*84.4%	82.5%	82.0%	82.7%
	Asian	379	14.7%	94.2%	90.5%	87.1%	85.0%	83.4%	83.6%
	Black or African American	145	5.6%	93.8%	86.9%	83.4%	79.3%	75.9%	76.6%
	Hispanic or Latino	104	4.0%	94.2%	90.4%	87.5%	84.6%	84.6%	85.6%
	International	103	4.0%	96.1%	95.1%	94.1%	91.2%	89.2%	91.2%
	Other ¹	56	2.2%	91.1%	85.7%	87.5%	85.7%	89.3%	87.5%
White	1788	69.4%	90.8%	84.9%	83.1%	81.5%	81.4%	82.2%	
2005	Total	2419		*92.5%	*86.9%	*84.1%	*82.4%	*81.7%	*81.9%
	Asian	313	12.9%	95.5%	89.5%	87.2%	85.9%	85.3%	85.6%
	Black or African American	143	5.9%	93.7%	84.6%	76.2%	69.9%	63.6%	63.6%
	Hispanic or Latino	110	4.5%	93.6%	91.7%	88.1%	84.4%	83.5%	82.6%
	International	73	3.0%	94.5%	87.7%	82.2%	84.9%	86.3%	83.6%
	Other ¹	79	3.3%	97.5%	96.2%	93.7%	88.6%	88.6%	88.6%
White	1701	70.3%	91.5%	85.9%	83.6%	82.2%	81.9%	82.4%	
2006	Total	2838		92.4%	86.6%	84.2%	*82.9%	*81.6%	*81.9%
	Asian	442	15.6%	93.2%	89.1%	87.3%	88.0%	85.3%	85.3%
	Black or African American	151	5.3%	89.4%	82.1%	78.8%	70.9%	72.2%	71.5%
	Hispanic or Latino	133	4.7%	94.7%	85.0%	82.0%	82.7%	78.9%	79.7%
	International	111	3.9%	91.9%	90.1%	85.6%	86.5%	85.6%	84.7%
	Other ¹	89	3.1%	93.3%	88.8%	87.6%	88.8%	84.3%	86.5%
White	1912	67.4%	92.3%	86.2%	83.8%	82.2%	81.4%	81.7%	
2007	Total	2624		93.4%	88.4%	87.1%	84.6%	84.6%	*84.8%
	Asian	435	16.6%	94.7%	90.8%	90.3%	85.5%	87.3%	86.9%
	Black or African American	117	4.5%	94.0%	88.9%	84.6%	76.9%	80.3%	77.8%
	Hispanic or Latino	132	5.0%	92.4%	86.3%	84.7%	80.2%	77.9%	76.3%
	International	160	6.1%	93.7%	89.3%	86.8%	85.5%	84.9%	88.7%
	Other ¹	78	3.0%	94.8%	90.9%	85.7%	83.1%	80.5%	81.8%
White	1702	64.9%	92.9%	87.8%	86.7%	85.2%	84.9%	85.2%	
2008	Total	2633		93.0%	87.8%	85.9%	84.8%	84.3%	
	Asian	466	17.7%	95.3%	91.0%	88.2%	87.6%	86.7%	
	Black or African American	128	4.9%	91.4%	88.3%	88.3%	84.4%	78.9%	
	Hispanic or Latino	117	4.4%	90.6%	87.2%	82.9%	84.6%	83.8%	
	International	175	6.6%	92.6%	82.3%	83.4%	85.1%	87.4%	
	Other ¹	73	2.8%	87.7%	80.8%	79.5%	76.7%	75.3%	
White	1674	63.6%	92.9%	87.8%	85.9%	84.5%	84.1%		
2009	Total	2655		*94.2%	*89.6%	*88.2%	*87.3%		
	Asian	496	18.7%	96.6%	94.8%	94.2%	91.3%		
	Black or African American	117	4.4%	94.9%	90.6%	87.2%	83.8%		
	Hispanic or Latino	94	3.5%	93.6%	87.2%	84.0%	87.2%		
	International	306	11.5%	88.9%	81.0%	82.6%	85.2%		
	Other ¹	84	3.2%	92.9%	89.3%	88.1%	83.3%		
White	1558	58.7%	94.6%	89.8%	87.7%	86.8%			
2010	Total	2706		94.9%	*91.5%	*89.8%			
	Asian	440	16.3%	95.7%	93.2%	92.5%			
	Black or African American	145	5.4%	92.4%	93.8%	89.0%			
	Hispanic or Latino	166	6.1%	95.2%	94.0%	91.6%			
	International	221	8.2%	91.4%	83.3%	83.3%			
	Other ¹	109	4.0%	92.7%	84.4%	78.9%			
White	1625	60.1%	95.4%	92.2%	90.6%				
2011	Total	2692		*94.9%	*90.7%				
	Asian	444	16.5%	97.3%	93.7%				
	Black or African American	166	6.2%	93.4%	86.7%				
	Hispanic or Latino	159	5.9%	95.6%	93.7%				
	International	237	8.8%	91.6%	83.1%				
	Other ¹	110	4.1%	92.7%	90.9%				
White	1576	58.5%	94.9%	91.2%					
2012	Total	3039		*95.5%					
	Asian	537	17.7%	98.7%					
	Black or African American	156	5.1%	92.3%					
	Hispanic or Latino	205	6.7%	96.6%					
	International	419	13.8%	93.8%					
	Other ¹	131	4.3%	96.9%					
White	1591	52.4%	95.0%						

* Significant difference ($p \leq 0.05$), when Other category is excluded.¹ Other includes: American Indian or Alaskan Native, Native Hawaiian or Other Pacific Islander, Unknown and Two or More Races² Ethnicity categories combined when populations totaled less than five.

Table 7. Retention Rates by College

Year	Cohort Freshman Entering College		Retention Rates (to next Fall term)						
	n	%	2nd Yr	3rd Yr	4th Yr	5th Yr	6th Yr	7th Yr	
2002	Total	2277	89.6%	83.9%	81.8%	80.4%	79.7%	79.9%	
	Architecture	111	4.9%	87.4%	83.8%	82.9%	81.1%	82.0%	81.1%
	Computing	254	11.2%	91.3%	85.8%	83.0%	79.1%	78.3%	78.3%
	Engineering	1432	62.9%	90.0%	83.8%	82.3%	81.2%	80.3%	80.8%
	Ivan Allen	145	6.4%	86.2%	81.4%	78.6%	80.0%	78.6%	80.0%
	Management Sciences	124	5.4%	87.1%	82.3%	77.4%	75.0%	75.0%	75.8%
2003	Total	2225	92.1%	85.9%	83.9%	82.4%	81.7%	81.9%	
	Architecture	125	5.6%	93.6%	90.4%	87.2%	88.0%	87.2%	
	Computing	193	8.7%	94.8%	87.0%	82.4%	77.2%	78.8%	78.8%
	Engineering	1441	64.8%	91.6%	85.0%	83.9%	82.7%	81.6%	81.7%
	Ivan Allen	112	5.0%	91.1%	87.5%	83.9%	84.8%	85.7%	85.7%
	Management Sciences	124	5.6%	93.5%	90.3%	85.5%	83.1%	79.0%	80.6%
2004	Total	2575	*91.8%	*86.5%	*84.4%	*82.5%	*82.0%	*82.7%	
	Architecture	178	6.9%	88.8%	80.3%	78.1%	75.8%	76.4%	77.0%
	Computing	185	7.2%	87.5%	81.5%	79.9%	78.8%	78.3%	78.8%
	Engineering	1658	64.4%	91.8%	86.5%	84.4%	82.8%	82.0%	82.7%
	Ivan Allen	121	4.7%	92.6%	89.3%	85.1%	81.0%	81.0%	81.8%
	Management Sciences	157	6.1%	94.3%	93.0%	89.8%	86.0%	87.3%	89.2%
2005	Total	2419	92.5%	86.9%	84.1%	82.4%	81.7%	81.9%	
	Architecture	145	6.0%	89.0%	88.3%	84.8%	84.1%	80.7%	82.1%
	Computing	158	6.5%	90.5%	83.5%	82.3%	77.8%	77.2%	75.9%
	Engineering	1524	63.0%	92.8%	87.1%	84.2%	82.4%	82.2%	82.4%
	Ivan Allen	173	7.2%	97.1%	88.4%	87.3%	85.0%	85.5%	86.1%
	Management Sciences	163	6.7%	91.4%	87.7%	80.9%	84.6%	80.9%	80.2%
2006	Total	2838	92.4%	86.6%	84.2%	82.9%	81.6%	81.9%	
	Architecture	174	6.1%	94.8%	88.5%	86.2%	85.1%	85.1%	
	Computing	231	8.1%	92.6%	84.4%	83.1%	79.2%	78.4%	79.2%
	Engineering	1760	62.0%	93.1%	87.3%	84.5%	83.6%	82.1%	82.3%
	Ivan Allen	184	6.5%	91.8%	86.4%	85.9%	84.8%	82.1%	82.6%
	Management Sciences	171	6.0%	90.6%	85.4%	82.5%	80.7%	82.5%	83.0%
2007	Total	2624	93.4%	*88.4%	87.1%	*84.6%	*84.6%	*84.7%	
	Architecture	144	5.5%	89.6%	86.8%	86.1%	85.4%	84.0%	83.3%
	Computing	164	6.3%	93.9%	89.6%	87.8%	81.1%	81.7%	82.3%
	Engineering	1660	63.3%	93.5%	88.6%	87.8%	85.7%	85.1%	84.9%
	Ivan Allen	169	6.4%	92.9%	82.2%	79.9%	76.9%	76.9%	78.1%
	Management Sciences	198	7.5%	97.5%	95.5%	89.9%	87.9%	89.4%	90.4%
2008	Total	2633	93.0%	87.8%	85.9%	84.8%	84.3%		
	Architecture	128	4.9%	93.0%	86.7%	84.4%	85.2%	85.2%	
	Computing	172	6.5%	93.6%	85.5%	84.3%	82.6%	82.0%	
	Engineering	1686	64.0%	93.2%	88.6%	86.7%	85.9%	85.1%	
	Ivan Allen	199	7.6%	93.5%	85.4%	83.9%	83.4%	84.4%	
	Management Sciences	170	6.5%	92.9%	87.1%	85.3%	83.5%	82.4%	
2009	Total	2655	94.2%	89.6%	88.2%	87.3%			
	Architecture	122	4.6%	92.6%	86.9%	86.1%	82.0%	82.0%	
	Computing	163	6.1%	94.5%	86.5%	87.7%	84.0%	84.0%	
	Engineering	1760	66.3%	94.4%	89.8%	88.8%	87.8%	87.8%	
	Ivan Allen	157	5.9%	91.7%	88.5%	87.9%	89.2%	89.2%	
	Management Sciences	166	6.3%	96.4%	93.4%	91.0%	88.6%	88.6%	
2010	Total	2706	94.9%	91.5%	89.8%				
	Architecture	91	3.4%	95.6%	92.3%	91.2%			
	Computing	172	6.4%	94.8%	91.3%	87.2%			
	Engineering	1799	66.5%	95.1%	91.7%	90.4%			
	Ivan Allen	150	5.5%	96.0%	90.0%	87.3%			
	Management Sciences	178	6.6%	93.8%	92.1%	88.2%			
2011	Total	2692	94.9%	90.7%					
	Architecture	92	3.4%	93.5%	91.3%				
	Computing	172	6.4%	94.8%	91.8%				
	Engineering	1832	68.1%	95.0%	91.0%				
	Ivan Allen	127	4.7%	94.5%	90.6%				
	Management Sciences	170	6.3%	97.1%	91.2%				
2012	Total	3039	95.5%						
	Architecture	62	2.0%	96.8%					
	Computing	243	8.0%	95.9%					
	Engineering	2177	71.6%	96.0%					
	Ivan Allen	127	4.2%	92.9%					
	Management Sciences	171	5.6%	93.0%					
	Sciences	259	8.5%	94.2%					

*Significant difference ($p \leq 0.05$)

Table 8. Retention by Pell Status

Year	Freshman Cohort			Retention Rates (to next Fall term)					
	Pell	n	%	2nd Yr	3rd Yr	4th Yr	5th Yr	6th Yr	7th Yr
2005	Total	2419		*92.5%	*86.9%	*84.1%	*82.4%	*81.7%	*81.9%
	Pell	377	15.6%	98.1%	93.9%	89.6%	86.4%	85.6%	87.8%
	No Pell	2042	84.4%	91.5%	85.6%	83.1%	81.6%	81.0%	80.9%
2006	Total	2838		92.4%	86.6%	84.2%	82.9%	81.6%	81.9%
	Pell	588	20.7%	92.2%	87.1%	84.7%	83.0%	81.1%	82.0%
	No Pell	2250	79.3%	92.5%	86.5%	84.1%	82.8%	81.8%	81.9%
2007	Total	2624		*93.4%	88.4%	87.1%	84.6%	84.6%	84.8%
	Pell	548	20.9%	95.8%	88.4%	88.6%	84.4%	86.2%	86.4%
	No Pell	2076	79.1%	92.7%	88.4%	86.6%	84.7%	84.2%	84.4%
2008	Total	2633		93.0%	*87.8%	*85.9%	84.8%	84.3%	
	Pell	541	20.5%	94.1%	90.8%	89.5%	87.1%	86.5%	
	No Pell	2092	79.5%	92.7%	87.0%	85.0%	84.3%	83.7%	
2009	Total	2655		94.2%	89.6%	88.2%	87.3%		
	Pell	563	21.2%	93.3%	90.9%	88.3%	85.4%		
	No Pell	2092	78.8%	94.5%	89.3%	88.2%	87.8%		
2010	Total	2706		94.9%	91.5%	89.8%			
	Pell	589	21.8%	93.9%	92.0%	88.8%			
	No Pell	2117	78.2%	95.1%	91.4%	90.1%			
2011	Total	2692		94.9%	90.7%				
	Pell	532	19.8%	95.3%	90.8%				
	No Pell	2160	80.2%	94.7%	90.7%				
2012	Total	3039		95.5%					
	Pell	447	14.7%	94.2%					
	No Pell	2592	85.3%	95.8%					

1 Pell Status is defined as a student ever receiving Pell.

Table 9. Graduation Rates by Gender

Year	Freshman Cohort			Graduation Rates (through Summer term)		
	Gender	n	%	4 Yrs	5 Yrs	6 Yrs
1999	Total	2298		*28.6%	*67.5%	*75.9%
	Female	655	28.5%	34.5%	77.7%	84.1%
	Male	1643	71.5%	26.2%	63.5%	72.7%
2000	Total	2243		*33.9%	*68.6%	*76.9%
	Female	641	28.6%	45.2%	76.4%	81.7%
	Male	1602	71.4%	29.3%	65.4%	75.0%
2001	Total	2225		*33.1%	*69.3%	*77.6%
	Female	635	28.5%	46.5%	80.5%	83.8%
	Male	1590	71.5%	27.7%	64.8%	75.2%
2002	Total	2277		*31.2%	*69.7%	*77.2%
	Female	636	27.9%	41.8%	78.9%	82.7%
	Male	1641	72.1%	27.1%	66.1%	75.0%
2003	Total	2225		*30.7%	*70.9%	*79.1%
	Female	607	27.3%	42.2%	80.4%	85.2%
	Male	1618	72.7%	26.4%	67.4%	76.9%
2004	Total	2575		*32.8%	*72.2%	*79.7%
	Female	768	29.8%	43.1%	79.8%	84.5%
	Male	1807	70.2%	28.4%	68.9%	77.6%
2005	Total	2419		*31.3%	*72.3%	*78.8%
	Female	714	29.5%	45.5%	80.0%	84.0%
	Male	1705	70.5%	25.3%	69.0%	76.6%
2006	Total	2838		*33.6%	*72.3%	*79.3%
	Female	890	31.4%	45.5%	81.1%	85.2%
	Male	1948	68.6%	28.1%	68.2%	76.6%
2007	Total	2624		*40.9%	*76.3%	*82.1%
	Female	854	32.5%	50.0%	82.4%	86.1%
	Male	1770	67.5%	36.4%	73.3%	80.2%
2008	Total	2633		*37.0%	*74.7%	
	Female	838	31.8%	44.2%	81.9%	
	Male	1795	68.2%	33.6%	71.4%	
2009	Total	2655		*40.1%		
	Female	887	33.4%	48.0%		
	Male	1768	66.6%	36.1%		

* Significant difference ($p \leq 0.05$)

Table 10. Graduation Rates by Ethnicity

Freshman Cohort		Graduation Rates (through Summer term)				
Year	Ethnicity	n	%	4 Yrs	5 Yrs	6 Yrs
1999	Total	2298		*28.6%	*67.5%	*75.9%
	Asian	308	13.4%	36.0%	71.1%	79.9%
	Black or African American	136	5.9%	10.3%	44.1%	61.8%
	Hispanic or Latino	46	2.0%	28.3%	63.0%	71.7%
	International	76	3.3%	55.3%	85.5%	86.8%
	Other ¹	46	2.0%	39.1%	67.4%	76.1%
	White	1686	73.4%	27.2%	68.1%	76.0%
2000	Total	2243		*33.9%	*68.6%	*76.9%
	Asian	295	13.2%	45.4%	73.6%	80.7%
	Black or African American	124	5.5%	25.0%	55.6%	66.9%
	Hispanic or Latino	63	2.8%	28.6%	73.0%	74.6%
	International	102	4.5%	67.6%	79.4%	84.3%
	Other ¹	29	1.3%	34.5%	69.0%	69.0%
	White	1630	72.7%	30.6%	67.8%	76.7%
2001	Total	2225		*33.1%	*69.3%	*77.6%
	Asian	349	15.7%	44.1%	71.3%	77.7%
	Black or African American	110	4.9%	23.6%	61.8%	68.2%
	Hispanic or Latino	47	2.1%	29.8%	76.6%	85.1%
	International	80	3.6%	63.8%	81.3%	85.0%
	Other ¹	19	0.9%	47.4%	84.2%	89.5%
	White	1620	72.8%	29.8%	68.3%	77.5%
2002	Total	2277		*31.2%	*69.7%	*77.2%
	Asian	317	13.9%	37.9%	75.4%	81.1%
	Black or African American	120	5.3%	17.5%	54.2%	63.3%
	Hispanic or Latino	63	2.8%	39.7%	76.2%	82.5%
	International	92	4.0%	55.4%	77.2%	82.6%
	Other ¹	27	1.2%	18.5%	59.3%	63.0%
	White	1658	72.8%	29.5%	69.2%	77.1%
2003	Total	2225		*30.7%	*70.9%	*79.1%
	Asian	317	14.2%	37.9%	72.2%	77.9%
	Black or African American	118	5.3%	14.4%	56.8%	70.3%
	Hispanic or Latino	62	2.8%	16.1%	72.6%	83.9%
	International	107	4.8%	55.1%	85.0%	86.9%
	Other ¹	44	2.0%	27.3%	65.9%	79.5%
	White	1577	70.9%	29.5%	70.8%	79.3%
2004	Total	2575		*32.8%	*72.2%	*79.7%
	Asian	379	14.7%	36.9%	74.9%	81.5%
	Black or African American	145	5.6%	22.8%	64.1%	74.5%
	Hispanic or Latino	104	4.0%	34.6%	75.0%	83.7%
	International	103	4.0%	47.6%	84.5%	88.3%
	Other ¹	56	2.2%	25.0%	69.6%	80.4%
	White	1788	69.4%	32.0%	71.4%	78.9%
2005	Total	2419		*31.3%	*72.3%	*78.8%
	Asian	313	12.9%	40.9%	77.0%	82.4%
	Black or African American	143	5.9%	14.7%	52.4%	60.8%
	Hispanic or Latino	110	4.5%	30.9%	72.7%	79.1%
	International	73	3.0%	43.8%	74.0%	80.8%
	Other ¹	79	3.3%	29.1%	74.7%	84.8%
	White	1701	70.3%	30.5%	72.8%	79.2%
2006	Total	2838		*33.6%	*72.3%	*79.3%
	Asian	442	15.6%	39.6%	75.3%	83.3%
	Black or African American	151	5.3%	19.2%	60.3%	68.2%
	Hispanic or Latino	133	4.7%	33.8%	71.4%	75.9%
	International	111	3.9%	45.9%	79.3%	82.0%
	Other ¹	89	3.1%	37.1%	69.7%	78.7%
	White	1912	67.4%	32.4%	72.3%	79.4%
2007	Total	2624		*40.9%	*76.3%	*82.1%
	Asian	435	16.6%	46.7%	80.5%	85.5%
	Black or African American	117	4.5%	30.8%	66.7%	75.2%
	Hispanic or Latino	132	5.0%	29.5%	66.7%	72.7%
	International	160	6.1%	47.5%	75.0%	80.6%
	Other ¹	78	3.0%	44.9%	73.1%	79.5%
	White	1702	64.9%	40.1%	76.9%	82.7%
2008	Total	2633		*37.0%	*74.7%	
	Asian	466	17.7%	41.8%	77.9%	
	Black or African American	128	4.9%	34.4%	70.3%	
	Hispanic or Latino	117	4.4%	30.8%	73.5%	
	International	175	6.6%	49.1%	74.3%	
	Other ¹	73	2.8%	38.4%	67.1%	
	White	1674	63.6%	34.9%	74.6%	
2009	Total	2655		*40.1%		
	Asian	496	18.7%	50.2%		
	Black or African American	117	4.4%	28.2%		
	Hispanic or Latino	94	3.5%	33.0%		
	International	306	11.5%	46.4%		
	Other ¹	84	3.2%	34.5%		
	White	1558	58.7%	37.2%		

* Significant difference ($p \leq 0.05$), when Other category is excluded.

¹ Other includes: American Indian or Alaskan Native, Native Hawaiian or Other Pacific Islander, Unknown and Two or More Races

² Ethnicity categories combined when populations totaled less than five.

Table 11. Graduation Rates by College

Year	College	Freshman Cohort		Graduation Rates (through Summer term)		
		n	%	4 Yrs	5 Yrs	6 Yrs
1999	Total	2298		*28.6%	*67.5%	75.9%
	Architecture	108	4.7%	45.4%	73.1%	77.8%
	Computing	352	15.3%	33.2%	63.9%	75.0%
	Engineering	1357	59.1%	23.5%	66.2%	75.7%
	Ivan Allen	97	4.2%	46.4%	75.3%	79.4%
	Scheller College of Business Sciences	128	5.6%	24.2%	68.0%	71.9%
2000	Total	2243		*33.9%	68.6%	76.9%
	Architecture	117	5.2%	44.4%	75.2%	82.1%
	Computing	377	16.8%	33.4%	66.8%	76.1%
	Engineering	1311	58.4%	29.1%	67.8%	77.2%
	Ivan Allen	99	4.4%	50.5%	74.7%	78.8%
	Scheller College of Business Sciences	106	4.7%	43.4%	67.0%	71.7%
2001	Total	2225		*33.1%	*69.3%	77.6%
	Architecture	96	4.3%	46.9%	84.4%	85.4%
	Computing	338	15.2%	34.3%	66.6%	78.1%
	Engineering	1292	58.1%	27.2%	68.0%	77.9%
	Ivan Allen	137	6.2%	54.7%	75.9%	79.6%
	Management Sciences	137	6.2%	38.7%	68.6%	72.3%
2002	Total	2277		*31.2%	*69.7%	77.2%
	Architecture	111	4.9%	42.3%	77.5%	79.3%
	Computing	254	11.2%	25.6%	60.6%	75.2%
	Engineering	1432	62.9%	28.0%	70.0%	78.1%
	Ivan Allen	145	6.4%	44.8%	73.8%	77.2%
	Scheller College of Business Sciences	124	5.4%	36.3%	67.7%	72.6%
2003	Total	2225		*30.7%	*70.9%	79.1%
	Architecture	125	5.6%	40.8%	81.6%	83.2%
	Computing	193	8.7%	28.5%	65.3%	75.1%
	Engineering	1441	64.8%	25.7%	69.7%	79.5%
	Ivan Allen	112	5.0%	45.5%	77.7%	79.5%
	Scheller College of Business Sciences	124	5.6%	46.8%	75.0%	78.2%
2004	Total	2575		*32.8%	*72.2%	*79.7%
	Architecture	178	6.9%	34.3%	71.3%	74.7%
	Computing	185	7.2%	29.7%	66.5%	73.0%
	Engineering	1658	64.4%	28.5%	70.6%	79.9%
	Ivan Allen	121	4.7%	39.7%	76.0%	81.0%
	Scheller College of Business Sciences	157	6.1%	43.3%	82.8%	84.7%
2005	Total	2419		*31.3%	72.3%	78.8%
	Architecture	145	6.0%	48.3%	75.2%	78.6%
	Computing	158	6.5%	22.8%	63.3%	72.2%
	Engineering	1524	63.0%	27.0%	72.1%	79.1%
	Ivan Allen	173	7.2%	44.5%	76.3%	83.8%
	Scheller College of Business Sciences	163	6.7%	30.7%	74.8%	76.7%
2006	Total	2838		*33.6%	72.3%	79.3%
	Architecture	174	6.1%	38.5%	77.6%	83.3%
	Computing	231	8.1%	30.7%	69.7%	76.2%
	Engineering	1760	62.0%	28.9%	71.3%	79.6%
	Ivan Allen	184	6.5%	47.8%	76.6%	81.0%
	Scheller College of Business Sciences	171	6.0%	45.0%	77.8%	81.9%
2007	Total	2624		*40.9%	76.3%	82.1%
	Architecture	144	5.5%	47.2%	76.4%	80.6%
	Computing	164	6.3%	46.3%	74.4%	79.3%
	Engineering	1660	63.3%	36.6%	75.9%	82.1%
	Ivan Allen	169	6.4%	50.3%	72.8%	76.9%
	Scheller College of Business Sciences	198	7.5%	50.0%	82.3%	88.9%
2008	Total	2633		*37.0%	74.7%	
	Architecture	128	4.9%	51.6%	78.1%	
	Computing	172	6.5%	42.4%	74.4%	
	Engineering	1686	64.0%	32.2%	74.1%	
	Ivan Allen	199	7.6%	47.2%	78.9%	
	Scheller College of Business Sciences	170	6.5%	39.4%	77.1%	
2009	Total	2655		*40.1%		
	Architecture	122	4.6%	55.7%		
	Computing	163	6.1%	49.1%		
	Engineering	1760	66.3%	34.4%		
	Ivan Allen	157	5.9%	51.0%		
	Scheller College of Business Sciences	166	6.3%	58.4%		
		287	10.8%	46.3%		

* Significant difference ($p \leq 0.05$)

Table 12. Graduation Rates by Pell Status

Freshman Cohort				Graduation Rates (through Summer term)		
Year	Pell	n	%	4 Yrs	5 Yrs	6 Yrs
2005	Total	2419		*31.3%	*72.3%	78.8%
	Pell	377	15.6%	25.7%	65.0%	78.5%
	No Pell	2042	84.4%	32.3%	73.6%	78.8%
2006	Total	2838		*33.6%	*72.3%	*79.3%
	Pell	588	20.7%	26.4%	62.8%	75.3%
	No Pell	2250	79.3%	35.5%	74.8%	80.4%
2007	Total	2624		*40.9%	*76.3%	82.1%
	Pell	548	20.9%	33.6%	71.0%	81.2%
	No Pell	2076	79.1%	42.8%	77.7%	82.4%
2008	Total	2633		*37.0%	74.7%	
	Pell	541	20.5%	31.2%	72.6%	
	No Pell	2092	79.5%	38.5%	75.2%	
2009	Total	2655		*40.1%		
	Pell	563	21.2%	36.4%		
	No Pell	2092	78.8%	41.1%		

¹ Pell Status is defined as a student ever receiving Pell.